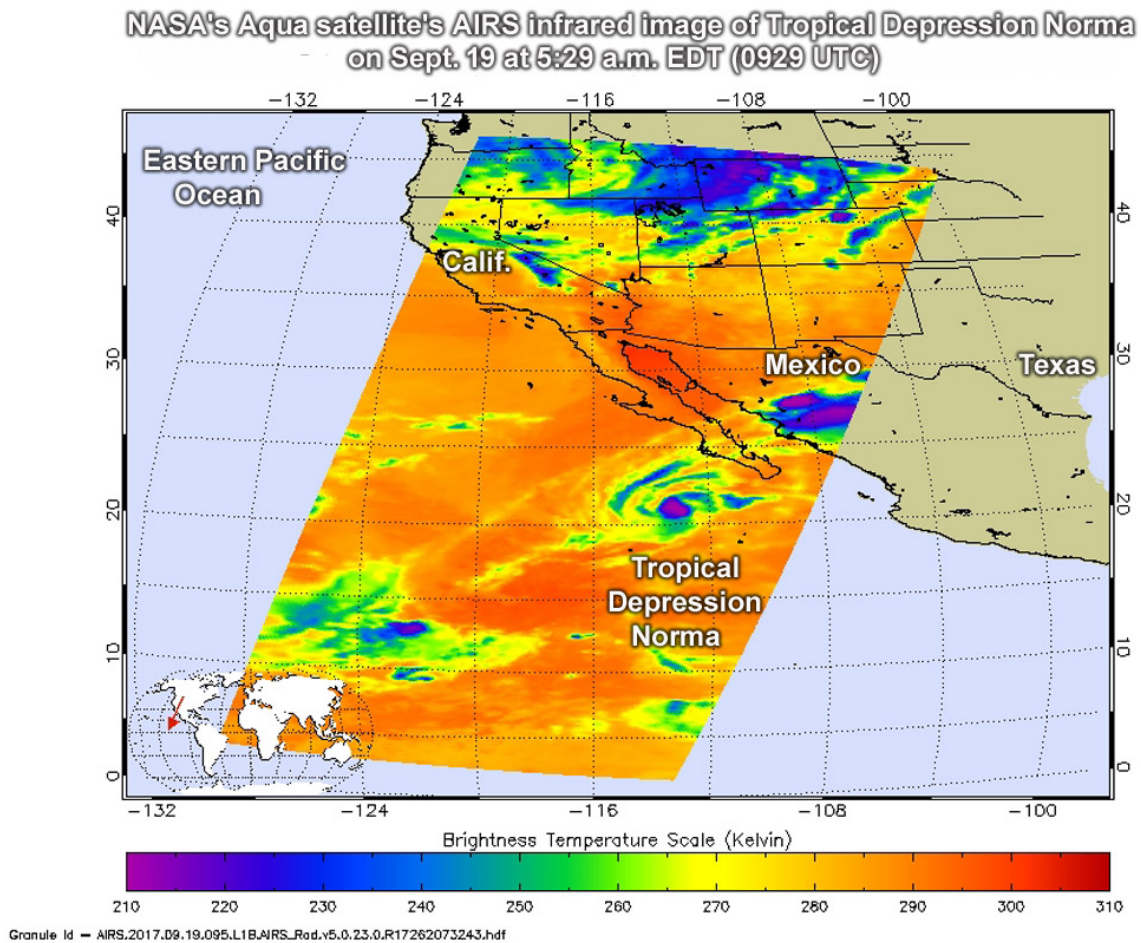


NASA sees Tropical Depression Norma's small area of strength

September 19 2017



On Sept. 19 at 5:29 a.m. EDT (0929 UTC) the AIRS instrument aboard NASA's Aqua satellite captured this false-colored infrared image of Tropical Depression Norma. Some cloud top temperatures in strong storms were as cold as minus 63 degrees Fahrenheit (minus 53 degrees Celsius). Credit: NASA JPL, Ed Olsen

Infrared imagery from NASA's Aqua satellite has revealed that the area of strongest storms within now Tropical Depression Norma has diminished.

The Atmospheric Infrared Sounder or AIRS instrument aboard NASA's Aqua satellite analyzed Norma in infrared light. Infrared light provides scientists with temperature data and that's important when trying to understand how strong storms can be. The higher the cloud tops, the colder and the stronger they are. So [infrared light](#) as that gathered by the AIRS instrument can identify the strongest sides of a tropical cyclone.

When NASA's Aqua satellite flew over Norma on Sept. 19 at 5:29 a.m. EDT (0929 UTC) the AIRS detected a smaller area of strong storms than the previous day. In that small area cloud top temperatures were as cold as minus 63 degrees Fahrenheit (minus 53 degrees Celsius). Storms with cloud top temperatures that cold have the capability to produce heavy rainfall.

Norma has moved far enough away from coastal [areas](#) that all watches and warnings have been dropped.

At 11 a.m. EDT (1500 UTC) on Sept. 19, the center of Tropical Depression Norma was located near 21.6 degrees north latitude and 114.5 degrees west longitude. That's about 305 miles (495 km) west-southwest of Cabo San Lucas, Mexico.

The depression was moving toward the west near 5 mph (7 kph) and the National Hurricane Center expects a turn to the west-northwest at night on Sept. 19.

Maximum sustained winds remain near 35 mph (55 km/h) with higher gusts.

Weakening is forecast, and Norma is expected to degenerate into a remnant low on Wednesday.

Provided by NASA's Goddard Space Flight Center

Citation: NASA sees Tropical Depression Norma's small area of strength (2017, September 19) retrieved 21 June 2024 from <https://phys.org/news/2017-09-nasa-tropical-depression-norma-small.html>

This document is subject to copyright. Apart from any fair dealing for the purpose of private study or research, no part may be reproduced without the written permission. The content is provided for information purposes only.