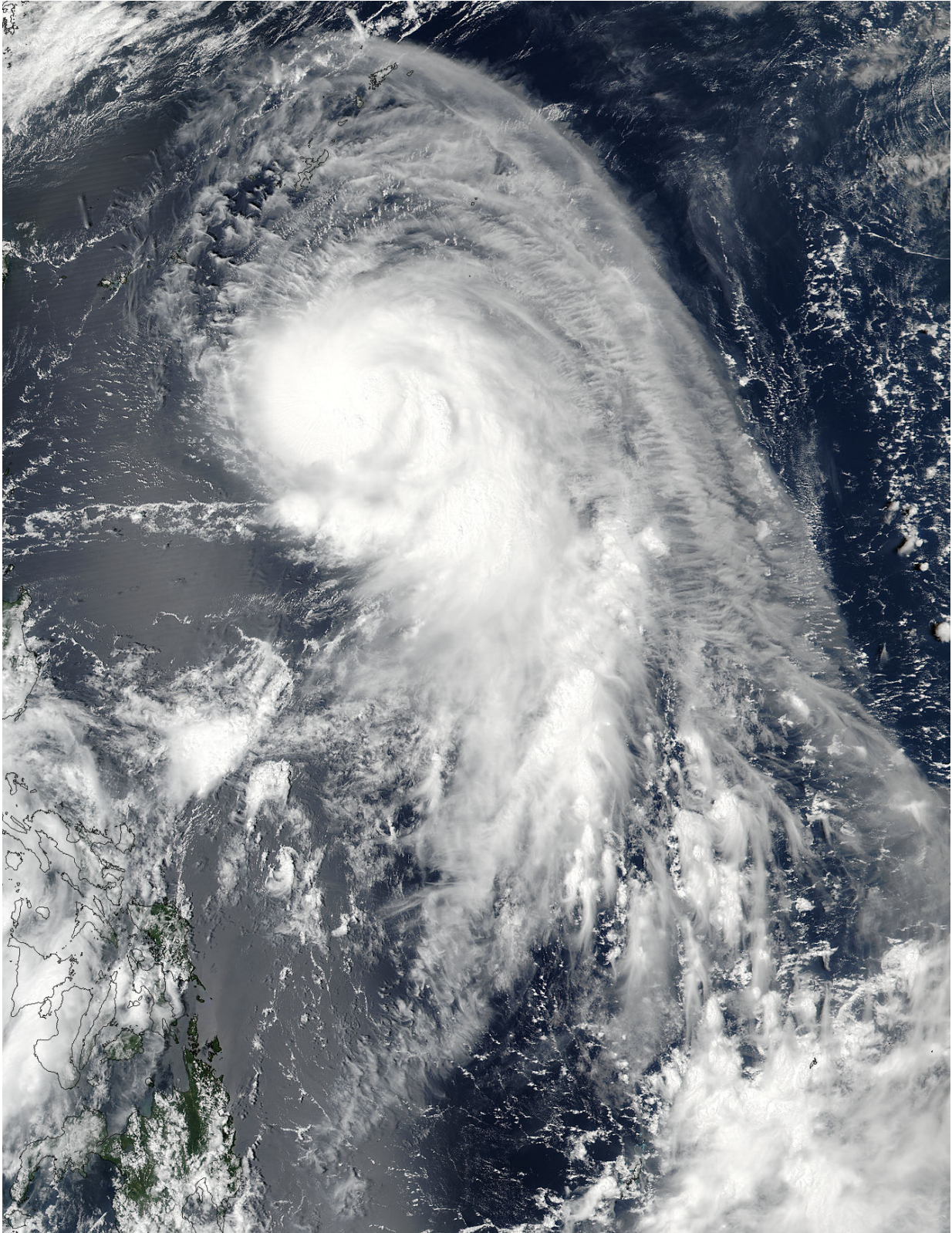


NASA finds a tail on Typhoon Talim

September 12 2017



NASA-NOAA's Suomi NPP satellite captured this visible light image of

Typhoon Talim Sept. 12, 2017, at 12:42 a.m. EDT (0442 UTC) in the Philippine Sea. Credit: NOAA/NASA Goddard Rapid Response Team

NASA satellite imagery showed what looks like a large tail on Typhoon Talim as it moved through the Philippine Sea.

On Sept. 12, 2017 at 12:42 a.m. EDT (0442 UTC) the Visible Infrared Imaging Radiometer Suite (VIIRS) instrument aboard NASA-NOAA's Suomi NPP satellite provided a visible-light of Typhoon Talim. The VIIRS image showed large bands of thunderstorms extending from Talim's center to the southeast, resembling a tail.

At 5 a.m. EDT (0900 UTC) Talim's maximum sustained winds were near 65 knots (75 mph/ 120.4 kph). The [typhoon](#) was moving to the west-northwest at 19 knots (21.8 mph/35.1 kph). It was centered near 22.3 degrees north latitude and 128.7 degrees east longitude, about 257 nautical miles south of Kadena Air Base, Okinawa Island, Japan.

The Joint Typhoon Warning Center forecast expects Talim to intensify as it moves west-northwest across the open Pacific Ocean toward Taiwan.

Provided by NASA's Goddard Space Flight Center

Citation: NASA finds a tail on Typhoon Talim (2017, September 12) retrieved 12 May 2024 from <https://phys.org/news/2017-09-nasa-tail-typhoon-talim.html>

This document is subject to copyright. Apart from any fair dealing for the purpose of private study or research, no part may be reproduced without the written permission. The content is provided for information purposes only.