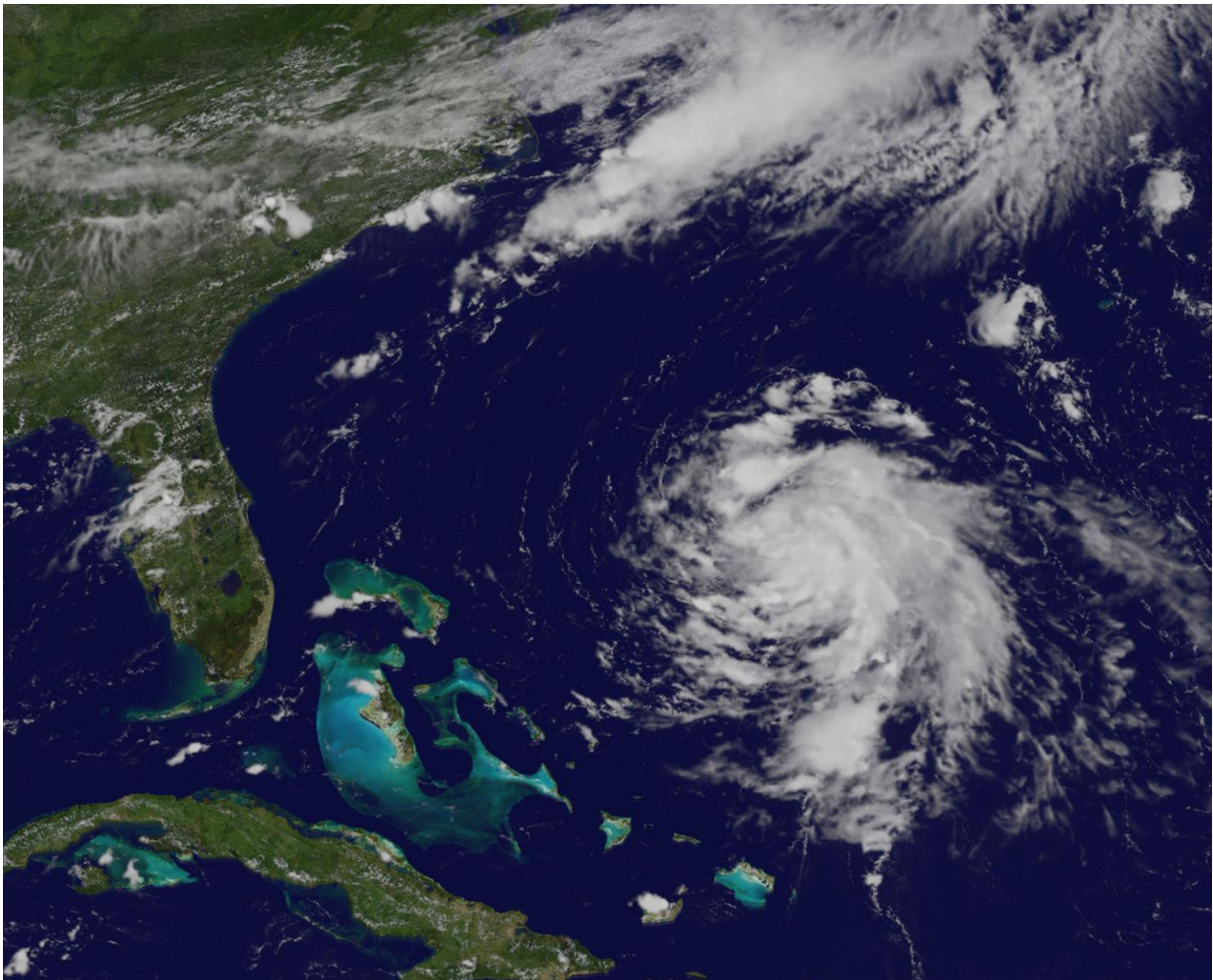


NASA sees strengthening Tropical Storm Gert west of Bermuda

August 14 2017



At 1:00 p.m. EDT (1700 UTC) on Aug. 13 NOAA's GOES-East satellite captured a visible image of Tropical Depression 8 in the Atlantic Ocean. Credit: NASA/NOAA GOES Project

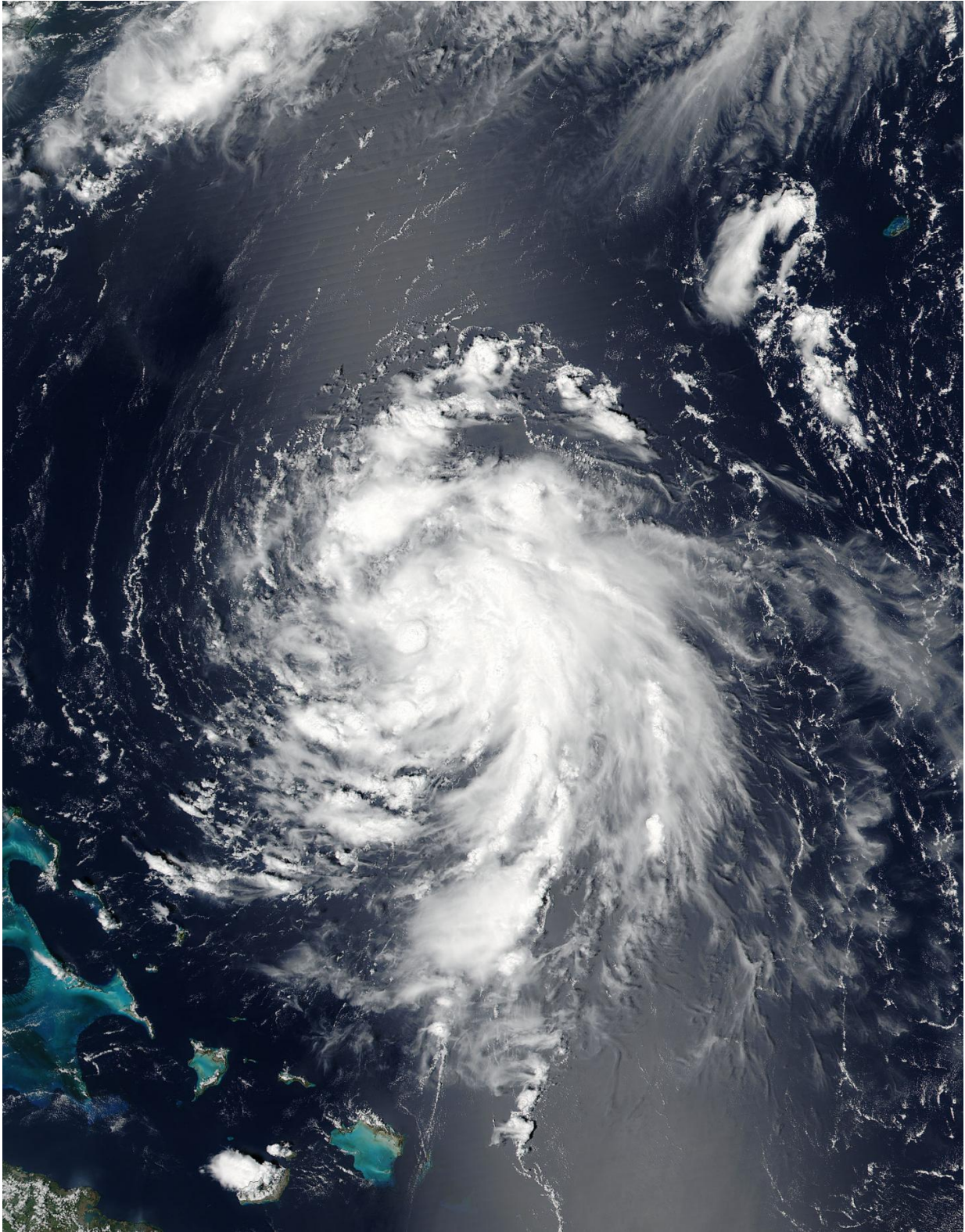
Tropical Depression Eight (TD8) formed around 11 p.m. EDT on Saturday, August 12 about 260 miles northeast of the southeastern Bahamas. By 5 p.m. the depression strengthened into a tropical storm and was named Gert.

At 1 p.m. EDT (1700 UTC) on Sunday, August 13, NOAA's GOES-East satellite captured a [visible image](#) of Tropical Depression 8 that showed the [storm](#) had become better organized. Bands of thunderstorms were spiraling into the center of circulation from the east and the southern quadrants of the storm. NOAA manages the GOES series of satellites. NASA/NOAA's GOES Project at NASA's Goddard Space Flight Center in Greenbelt, Maryland uses the satellite data to create imagery.

By 1:36 p.m. EDT (1736 UTC) on August 13, The Visible Infrared Imaging Radiometer Suite (VIIRS) instrument aboard NASA-NOAA's Suomi NPP [satellite](#) provided a visible look at Gert. Bands of thunderstorms wrapped around the storm from southeast to northeast.

The National Hurricane Center (NHC) noted that imagery showed that between the morning and 5 p.m. EDT "the banding features have become better established during the last several hours, and the system has become less vertically tilted."

On August 14 at 5 a.m. EDT (0900 UTC) the center of Tropical Storm Gert was located near 29.7 degrees north latitude and 72.2 degrees west longitude. That's about 475 miles (760 km) west-southwest of Bermuda. The estimated minimum central pressure is 1009 millibars. Maximum sustained winds are near 45 mph (75 kph) with higher gusts.



At 1:36 p.m. EDT (1736 UTC) on August 13, NASA-NOAA's Suomi NPP

satellite provided a visible look at Gert. Bands of thunderstorms wrapped around the storm from southeast to northeast. Credit: NOAA/NASA Goddard Rapid Response Team

Gert was moving toward the north-northwest near 9 mph (15 kph) and the NHC forecasts a turn toward the north then to north-northeast. On the forecast track, Gert is expected to pass about midway between the United States east coast and Bermuda on Tuesday

The NHC said that some strengthening is forecast during the next 48 hours, and Gert could become a hurricane by Wednesday, August 16.

For [forecast](http://www.nhc.noaa.gov) updates on Gert, visit: <http://www.nhc.noaa.gov>.

Provided by NASA's Goddard Space Flight Center

Citation: NASA sees strengthening Tropical Storm Gert west of Bermuda (2017, August 14) retrieved 27 June 2024 from <https://phys.org/news/2017-08-nasa-tropical-storm-gert-west.html>

This document is subject to copyright. Apart from any fair dealing for the purpose of private study or research, no part may be reproduced without the written permission. The content is provided for information purposes only.