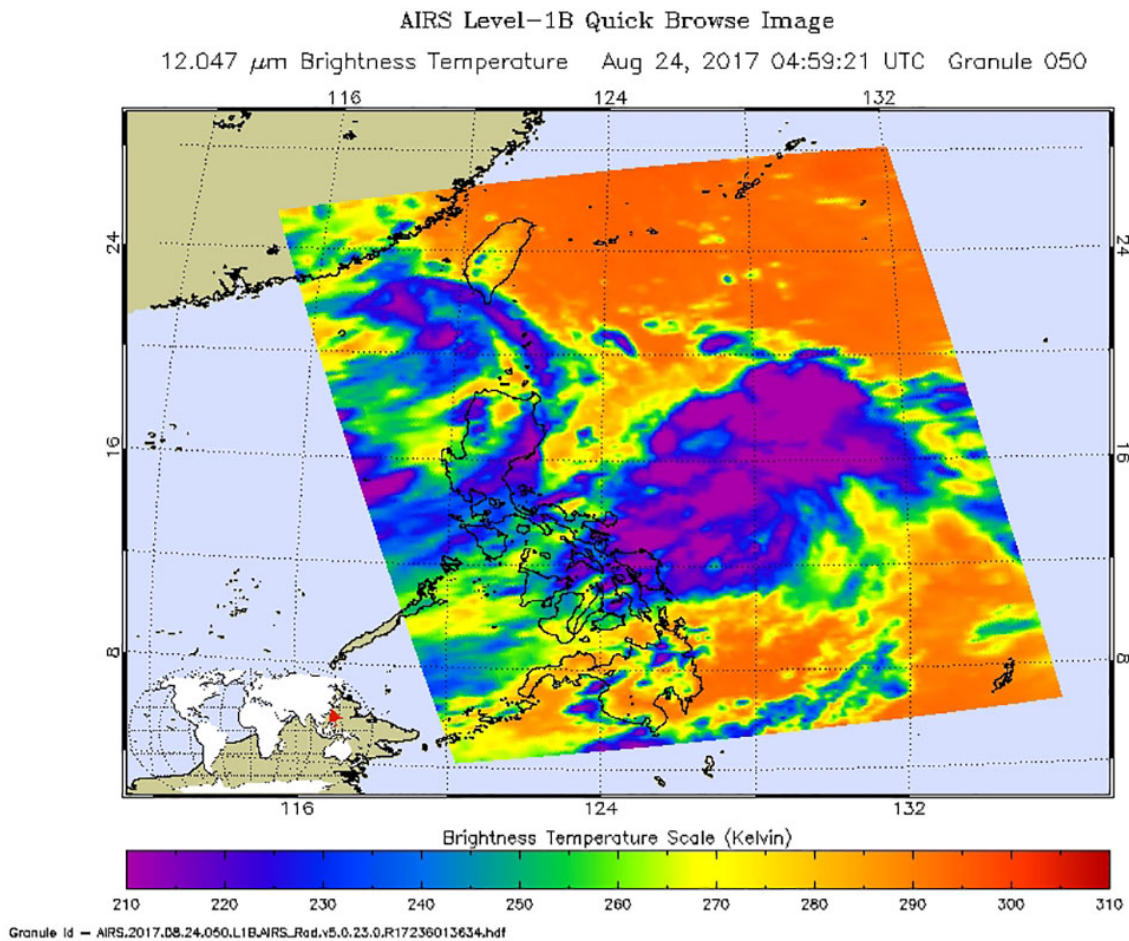


NASA satellite reveals formation of Philippine Sea Tropical Depression 16W

August 25 2017



NASA's Aqua satellite captured infrared temperature data on Tropical Depression 16W on August 24 at 12:59 a.m. EDT (0459 UTC). The image showed some very cold cloud top temperatures as cold as minus 63 degrees Fahrenheit (minus 53 degrees Celsius). Credit: NASA JPL/Ed Olsen

NASA's Aqua satellite provided an infrared look at the newly formed Tropical Depression 16W in the Philippine Sea. 16W is known locally in the Philippines as "Jolina."

In the Philippines, public storm warning signal #1 was placed in effect for the Luzon provinces of Southern Cagayan, Isabela, and Northern Aurora.

The Atmospheric Infrared Sounder or AIRS instrument aboard NASA's Aqua satellite looked at cloud top temperatures in Tropical Depression 16W using infrared light. The AIRS data were taken on August 24 at 12:59 a.m. EDT (0459 UTC). The image showed some very cold cloud top temperatures as cold as minus 63 degrees Fahrenheit (minus 53 degrees Celsius). NASA research has shown that storms with cloud tops that cold are high up in the troposphere and can generate heavy rainfall.

The infrared data was false-colored at NASA's Jet Propulsion Laboratory in Pasadena, California, where AIRS data is managed.

Tropical Depression 16W formed around 11 a.m. EDT (1500 UTC) on Aug. 24. It was centered near 15.6 degrees north latitude and 126.1 degrees east longitude, about 301 nautical miles east-northeast of Manila, Philippines. 16W was moving to the west at 14 knots and had [maximum sustained winds](#) near 30 knots (34.5 mph/55.5 kph).

The system is forecast to intensify to into a tropical storm with maximum sustained winds near 50 knots (57 mph/92 kph) before passing over Luzon, northern Philippines. Tropical Depression 16W is expected to re-strengthen to 65 knots (75 mph/120 kph) and reach typhoon status in the South China Sea before making final landfall near Hong Kong.

Provided by NASA's Goddard Space Flight Center

Citation: NASA satellite reveals formation of Philippine Sea Tropical Depression 16W (2017, August 25) retrieved 19 June 2024 from <https://phys.org/news/2017-08-nasa-satellite-reveals-formation-philippine.html>

This document is subject to copyright. Apart from any fair dealing for the purpose of private study or research, no part may be reproduced without the written permission. The content is provided for information purposes only.