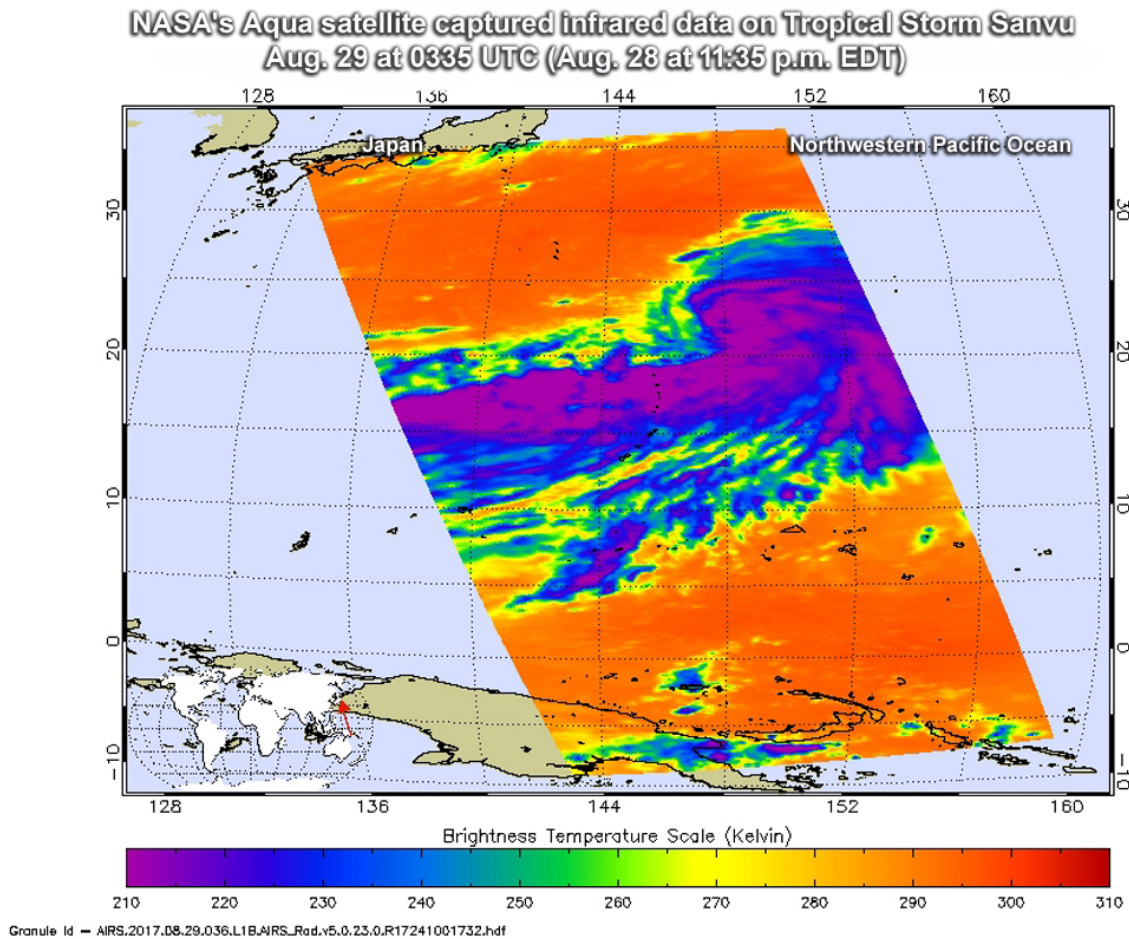


NASA sees Sanvu strengthen to a tropical storm

August 29 2017



The AIRS instrument aboard NASA's Aqua satellite captured infrared data on Tropical Storm Sanvu on Aug. 29 at 0335 UTC (Aug. 28 at 11:35 p.m. EDT). Strongest storms appear in purple. Credit: NASA JPL, Ed Olsen

Tropical Depression Sanvu has strengthened into a tropical storm in the Northwestern Pacific Ocean and NASA's Aqua satellite gathered temperature data on the storm's cloud tops using infrared light.

The Atmospheric Infrared or AIRS instrument aboard NASA's Aqua satellite captured infrared data on Tropical Storm Sanvu Aug. 29 at 0335 UTC (Aug. 28 at 11:35 p.m. EDT). Infrared data provides temperature information to scientists. Cloud top temperatures are an important factor when it comes to determining the strength of storms. The higher the cloud tops, the colder and the stronger the storms.

The image showed that the area of coldest cloud tops had expanded since the previous day. Coldest temperatures were as cold as or colder than minus 63 degrees Fahrenheit (minus 53 degrees Celsius). Those storms were around the center of circulation and in a thick feeder band of thunderstorms extending southwest of the center. NASA research has shown that storms with [cloud tops](#) that cold, reached high into the troposphere and had the ability to generate heavy rain. The image did reveal that the [tropical storm](#) was being affected by southwesterly vertical wind shear as clouds are being pushed northeast of the center.

At 11 a.m. EDT (1500 UTC) on Aug. 28 the center of Sanvu was located near 24.4 degrees north latitude and 146.5 degrees east longitude. That puts Sanvu's center about 315 nautical miles east of Iwo To Island, Japan. Maximum sustained winds were near 45 knots (51.7 mph/83.3 kph). Sanvu was moving to the north-northwest at 15 knots (17.2 mph/27.7 kph).

The Joint Typhoon Warning Center expects Sanvu to move in a northeasterly direction and intensify to typhoon status by Aug. 31, before weakening again.

Provided by NASA's Goddard Space Flight Center

Citation: NASA sees Sanvu strengthen to a tropical storm (2017, August 29) retrieved 21 June 2024 from <https://phys.org/news/2017-08-nasa-sanvu-tropical-storm.html>

This document is subject to copyright. Apart from any fair dealing for the purpose of private study or research, no part may be reproduced without the written permission. The content is provided for information purposes only.