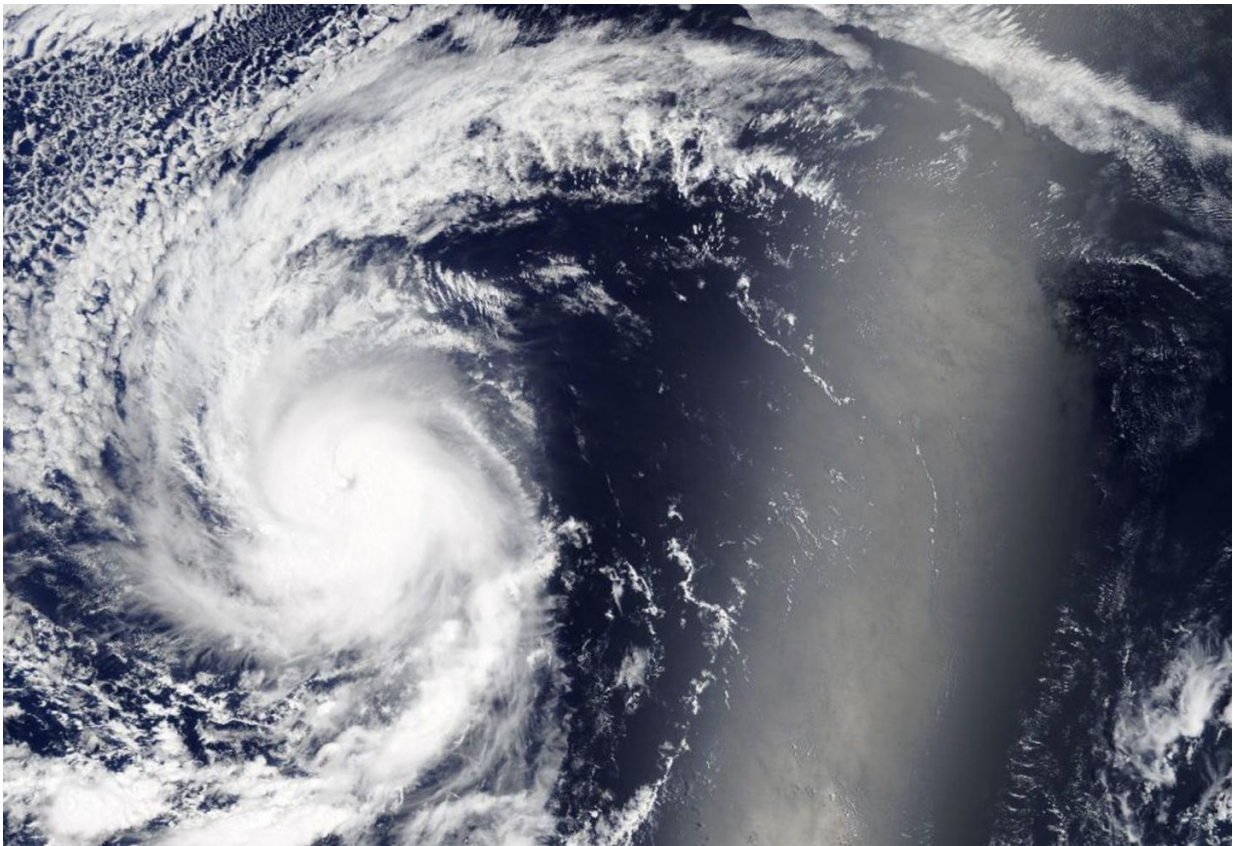


NASA sees major Hurricane Kenneth in Eastern Pacific

August 21 2017



NASA's Terra satellite passed over Hurricane Kenneth in the Eastern Pacific Ocean on Aug. 20 and captured an image that showed a well-developed storm with a visible eye. Credit: NASA Goddard MODIS Rapid Response Team

Former Tropical Depression 13E has strengthened into a Major

Hurricane on the Saffir-Simpson Hurricane Wind Scale. NASA's Terra satellite passed over Kenneth and captured an image that showed a well-developed storm with a visible eye.

On Friday, Aug. 18 at 11 p.m. EDT Tropical Depression 13E strengthened into Tropical Storm Kenneth. Just 48 hours later at 11 p.m. EDT on August 20, Kenneth became a hurricane.

The Moderate Resolution Imaging Spectroradiometer or MODIS instrument that flies aboard NASA's Terra satellite captured a visible-light image of Kenneth at 4:30 p.m. EDT on Sunday, Aug. 20, 2017. It showed powerful thunderstorms wrapped around the center of the visible 15 nautical-mile wide eye. Infrared satellite imagery showed that the cloud tops of the surrounding ring of convection has cooled indicating they have strengthened as the storms have pushed higher into the troposphere.

At 5 a.m. EDT (0900 UTC) on Aug. 21 the center of Hurricane Kenneth was located near 17.4 degrees north latitude and 130.0 degrees west longitude. That's 1,355 miles west-southwest of Baja California, Mexico. Kenneth was moving toward the west-northwest near 10 mph (17 kph) and the National Hurricane Center (NHC) forecasts a turn toward the northwest, then north-northwest over the next couple of days.

Maximum sustained winds have increased to near 130 mph (215 kph) with higher gusts. Kenneth is a category 4 [hurricane](#) on the Saffir-Simpson Hurricane Wind Scale. The estimated minimum central pressure is 952 millibars.

A little additional strengthening is possible this morning, before weakening begins tonight.

Provided by NASA's Goddard Space Flight Center

Citation: NASA sees major Hurricane Kenneth in Eastern Pacific (2017, August 21) retrieved 23 April 2024 from <https://phys.org/news/2017-08-nasa-major-hurricane-kenneth-eastern.html>

This document is subject to copyright. Apart from any fair dealing for the purpose of private study or research, no part may be reproduced without the written permission. The content is provided for information purposes only.