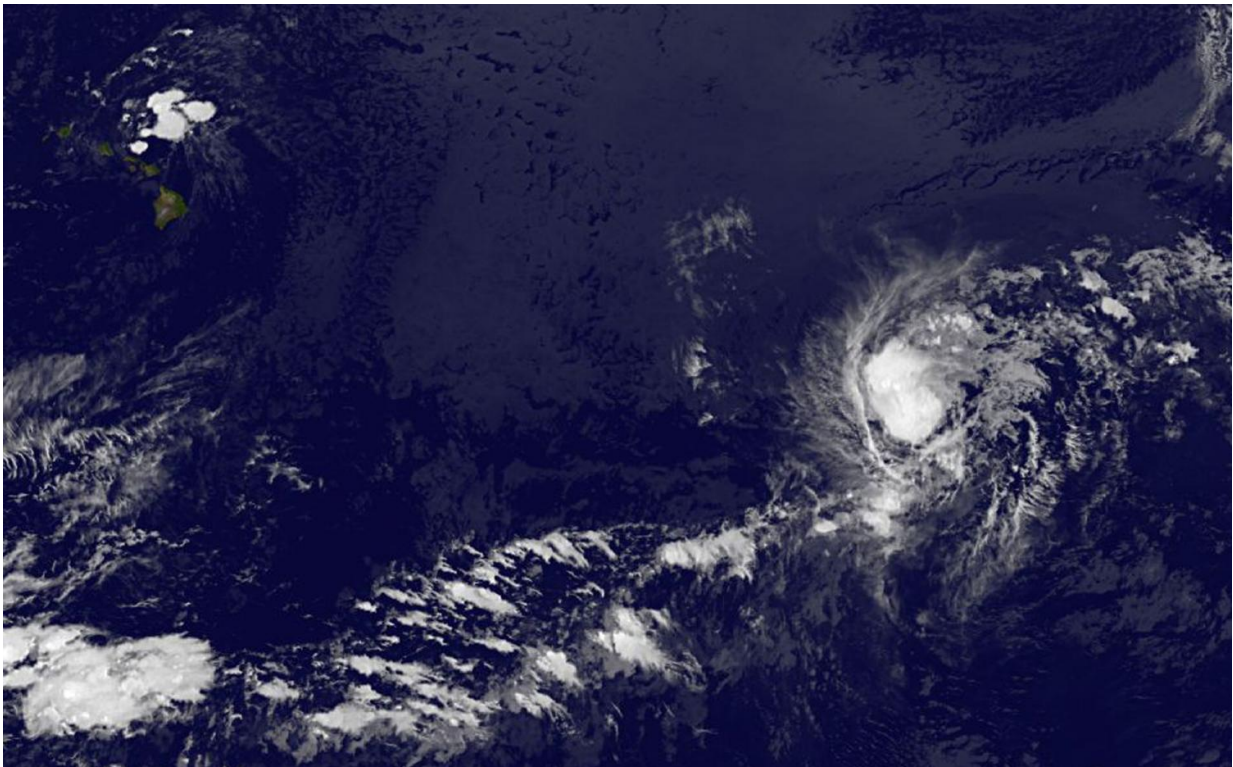


Satellite shows Tropical Storm Greg losing shape

July 24 2017



NOAA's GOES-West satellite captured this infrared image of Tropical Storm Greg on July 24 at 8 a.m. EDT (1200 UTC). Greg is located over 1,500 miles east of Hawaii. Credit: NASA/NOAA GOES Project

Tropical Storm Greg appears to be less-rounded and more elongated on satellite imagery from NOAA's GOES-West satellite. Greg is still over

1,500 miles east of Hawaii.

NOAA's GOES-West satellite captured an [infrared image](#) of Tropical Storm Greg on July 24 at 8 a.m. EDT (1200 UTC). The image revealed a less-rounded tropical cyclone. The National Hurricane Center noted the reason for the change in shape: "Greg's convective structure is gradually deteriorating, likely due to very dry air in the surrounding atmosphere."

NOAA manages the GOES series of satellites, and NASA uses the [satellite](#) data to create images and animations. The image was created by the NASA/NOAA GOES Project at NASA's Goddard Space Flight Center in Greenbelt, Maryland.

At 11 a.m. EDT (1500 UTC), the center of Tropical Storm Greg was located near 14.6 degrees north latitude and 133.2 degrees west longitude. That's about 1,515 miles (2,440 km) east of South Point Hawaii. Greg was moving toward the west near 12 mph (19 kph). A west-northwestward or northwestward motion at a slower forward speed is expected during the next couple of days.

Maximum sustained winds are near 45 mph (75 kph) with higher gusts. Weakening is forecast during the next 48 hours. Greg will likely be a [tropical depression](#) by about July 26 and then a remnant low by July 27.

Provided by NASA's Goddard Space Flight Center

Citation: Satellite shows Tropical Storm Greg losing shape (2017, July 24) retrieved 19 April 2024 from <https://phys.org/news/2017-07-satellite-tropical-storm-greg.html>

This document is subject to copyright. Apart from any fair dealing for the purpose of private study or research, no part may be reproduced without the written permission. The content is provided for information purposes only.