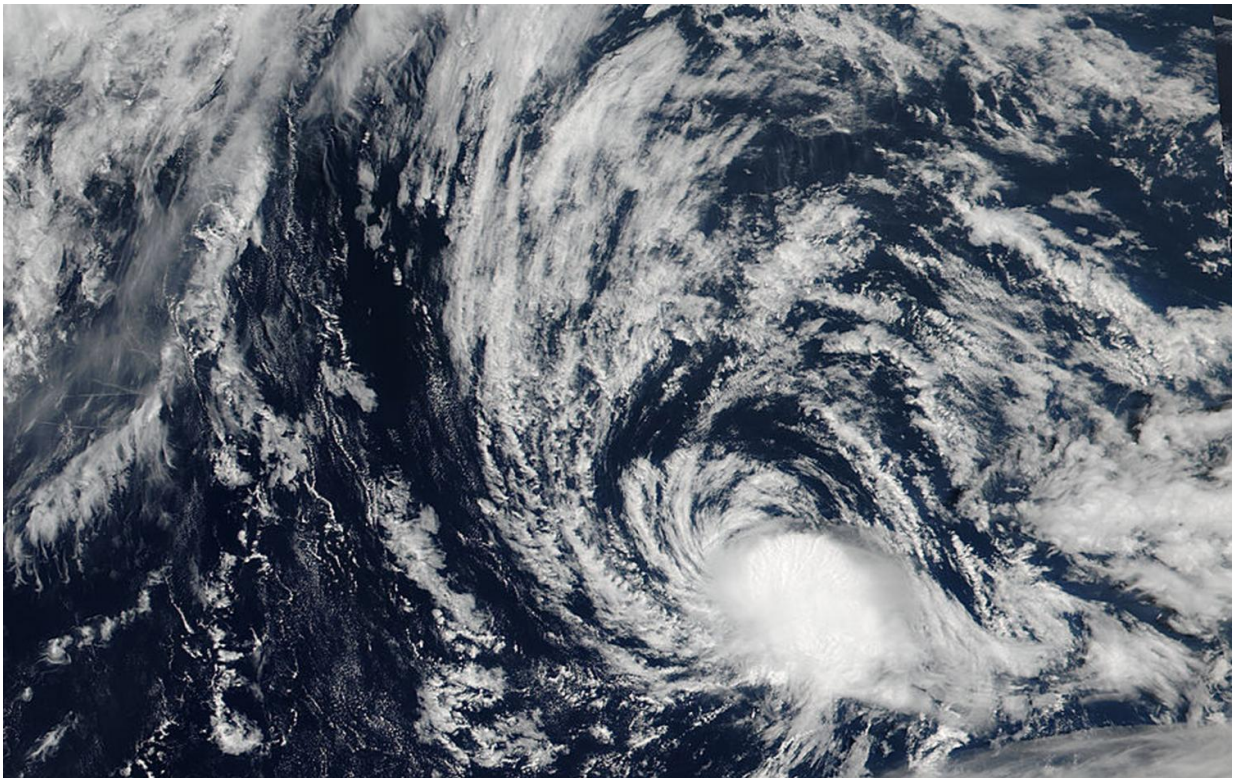


# NASA spots a waning Tropical Depression Kulap

July 25 2017

---



NASA-NOAA's Suomi NPP satellite captured this visible light image of a small Tropical Depression Kulap in the Northwestern Pacific Ocean on July 25 at 0324 UTC (July 24 at 11:24 p.m. EDT). Credit: NOAA/NASA Goddard Rapid Response

Kulap is now a tropical depression moving through the Northwestern

Pacific Ocean, and NASA-NOAA's Suomi NPP satellite captured a visible light image of the diminishing storm.

The Visible Infrared Imaging Radiometer Suite (VIIRS) instrument aboard NASA-NOAA's Suomi NPP satellite showed the storm had become elongated as it weakened. Kulap is being affected by dry air and northerly vertical [wind shear](#) which is pushing its clouds south of the center.

At 11 a.m. EDT (1500 UTC) on July 25, Kulap's maximum sustained winds were near 34.5 mph (30 knots/55.5 kph). It was centered near 32.3 degrees north latitude and 153.1 degrees east longitude. That's about 492 nautical miles north of Minami Tori Shima. It was moving to the west-southwest at 12.6 mph (11 knots/20.5 kph). Kulap is located north of powerful Typhoon Noru.

The Joint Typhoon Warning Center's forecast calls for the storm to dissipate late on July 26.

Provided by NASA's Goddard Space Flight Center

Citation: NASA spots a waning Tropical Depression Kulap (2017, July 25) retrieved 26 June 2024 from <https://phys.org/news/2017-07-nasa-waning-tropical-depression-kulap.html>

This document is subject to copyright. Apart from any fair dealing for the purpose of private study or research, no part may be reproduced without the written permission. The content is provided for information purposes only.