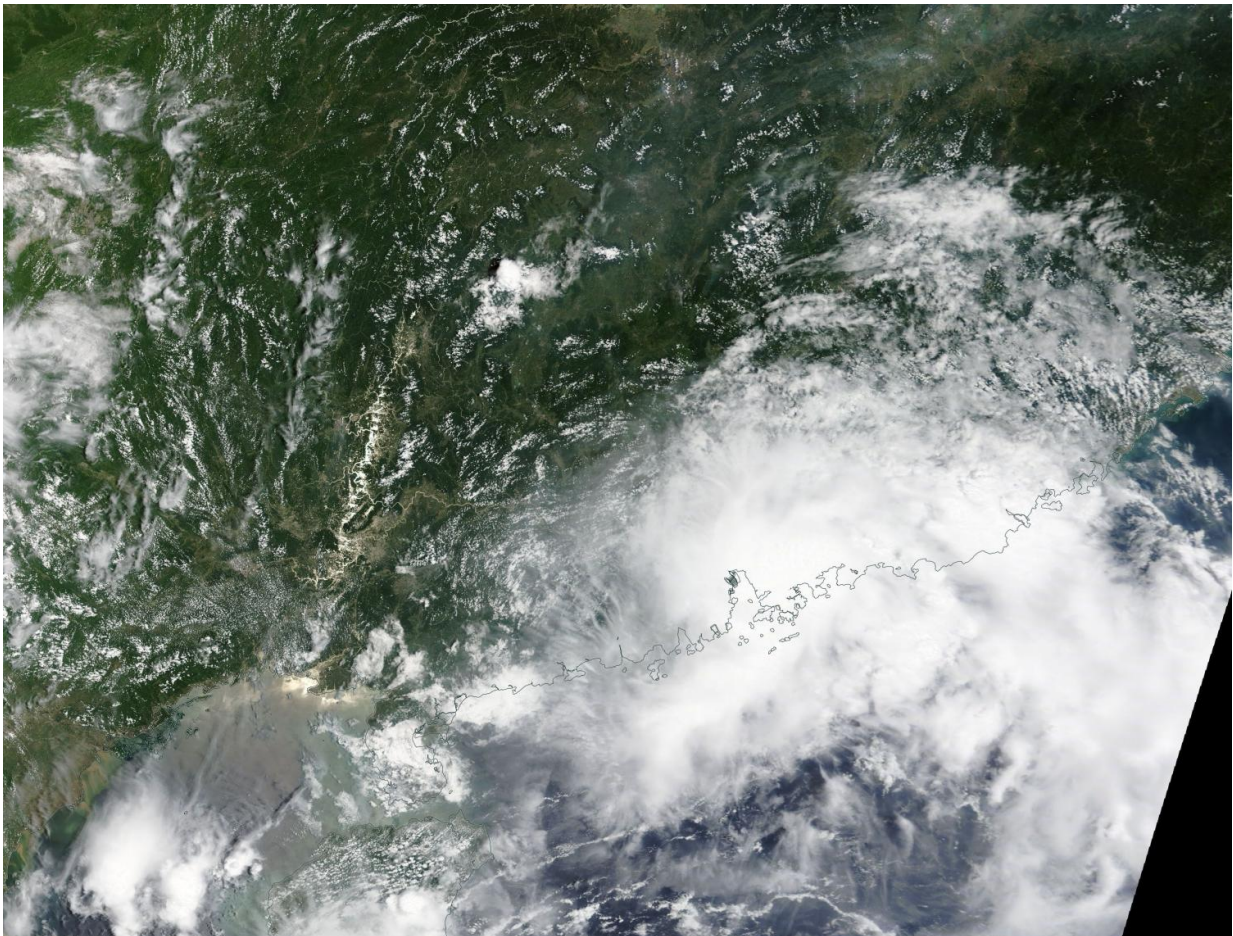


NASA sees Tropical Depression Roke over Hong Kong

July 24 2017



NASA's Terra satellite captured this visible light image of Tropical Depression Roke after it made landfall in Hong Kong on July 23. Credit: NASA Goddard Modis Rapid Response Team

NASA's Terra satellite captured Tropical Depression Roke over Hong Kong after it made landfall on July 23.

On July 22, Tropical Depression 10W strengthened into Tropical Storm Roke and was located about 191 miles east of Hong Kong. At that time a Stand-by signal #1 was in force in Hong Kong. By July 23, Roke weakened back to a [depression](#) and move west-northwest toward the China coast. Maximum sustained winds had dropped to 30 knots (34 mph/55 kph) and warnings were dropped late in the day. The Joint Typhoon Warning Center issued their final advisory on July 23 at 0300 UTC (July 22 at 11 p.m. EDT).

Roke made [landfall](#) at Sai Kung East Country Park on the Sai Kung Peninsula in Hong Kong. After landfall, NASA's Terra satellite captured this visible light image of Tropical Depression Roke on July 23. The image showed an elongated area of clouds and thunderstorms associated with the depression along the southeastern coast of China.

The South China Morning Post reported that there were some ferries and flights disrupted, but there were no damages.

Provided by NASA's Goddard Space Flight Center

Citation: NASA sees Tropical Depression Roke over Hong Kong (2017, July 24) retrieved 5 July 2024 from <https://phys.org/news/2017-07-nasa-tropical-depression-roke-hong.html>

This document is subject to copyright. Apart from any fair dealing for the purpose of private study or research, no part may be reproduced without the written permission. The content is provided for information purposes only.