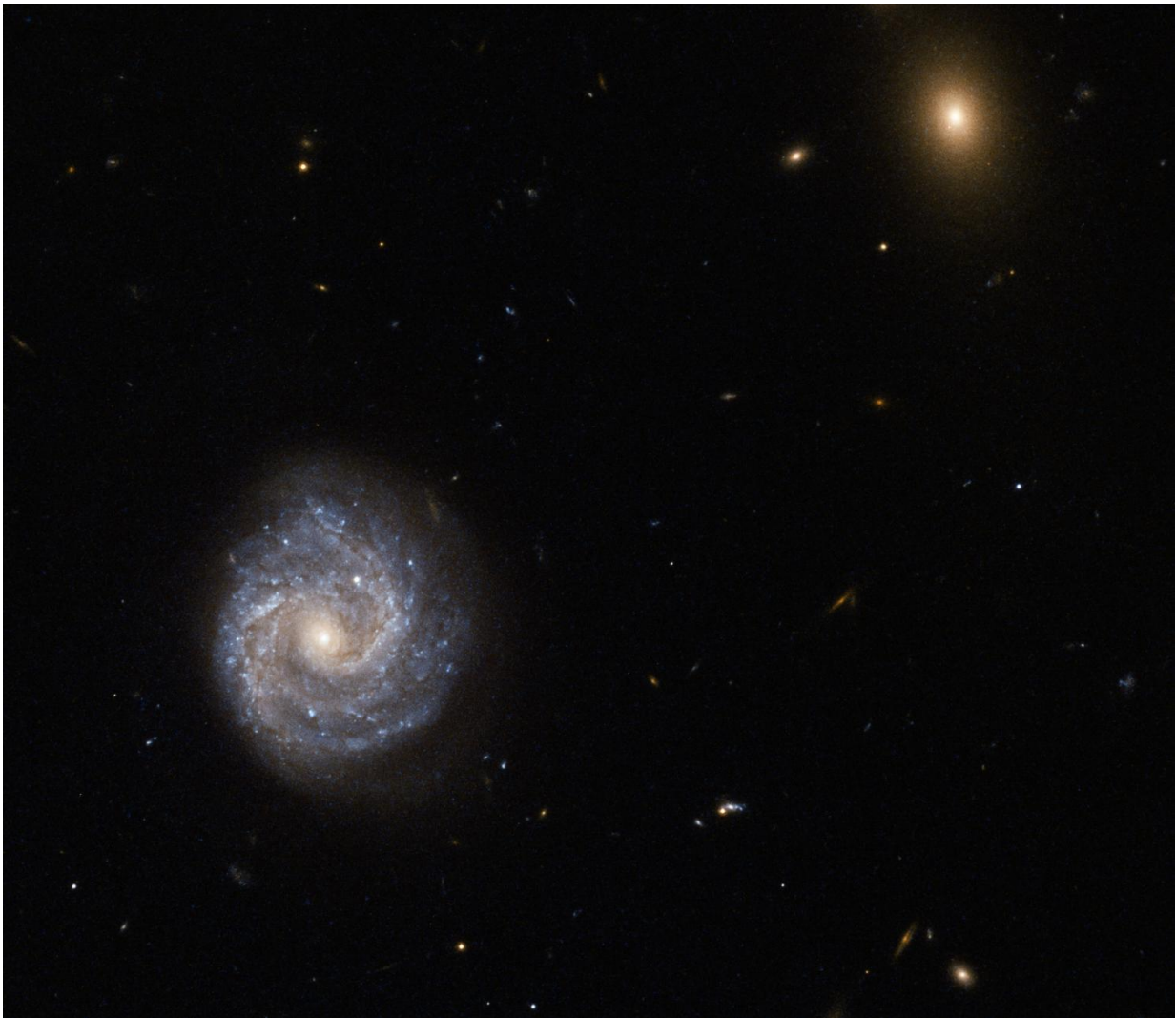


# Hubble eyes a powerful galaxy with a password name

June 30 2017, by Karl Hille

---



2XMM J143450.5+033843 lies nearly 400 million light-years away from Earth. It is a Seyfert galaxy that is dominated by something known as an Active Galactic Nucleus -- its core is thought to contain a supermassive black hole that

is emitting huge amounts of radiation, pouring energetic X-rays out into the universe. The other fuzzy object in the frame was named in the same way -- it is a bright galaxy named 2XMM J143448.3+033749. Credit: ESA/Hubble & NASA

Not all galaxies have the luxury of possessing a simple moniker or quirky nickname. This impressive galaxy imaged by the NASA/ESA Hubble Space Telescope is one of the unlucky ones, and goes by a name that looks more like a password for a computer: 2XMM J143450.5+033843.

Such a name may seem like a random jumble of numbers and letters, but like all galactic epithets it has a distinct meaning. This galaxy, for example, was detected and observed as part of the second X-ray sky survey performed by ESA's XMM-Newton Observatory. Its celestial coordinates form the rest of the bulky name, following the "J": a right ascension value of 14h (hours) 34m (minutes) 50.5s (seconds). This can be likened to terrestrial longitude. It also has a declination of +03d (degrees) 38m (minutes) 43s (seconds). Declination can be likened to terrestrial latitude. The other fuzzy object in the frame was named in the same way—it is a bright galaxy named 2XMM J143448.3+033749.

2XMM J143450.5+033843 lies nearly 400 million light-years away from Earth. It is a Seyfert galaxy that is dominated by something known as an Active Galactic Nucleus—its core is thought to contain a [supermassive black hole](#) that is emitting huge amounts of radiation, pouring energetic X-rays out into the Universe.

Provided by NASA's Goddard Space Flight Center

Citation: Hubble eyes a powerful galaxy with a password name (2017, June 30) retrieved 20 April 2024 from <https://phys.org/news/2017-06-hubble-eyes-powerful-galaxy-password.html>

This document is subject to copyright. Apart from any fair dealing for the purpose of private study or research, no part may be reproduced without the written permission. The content is provided for information purposes only.