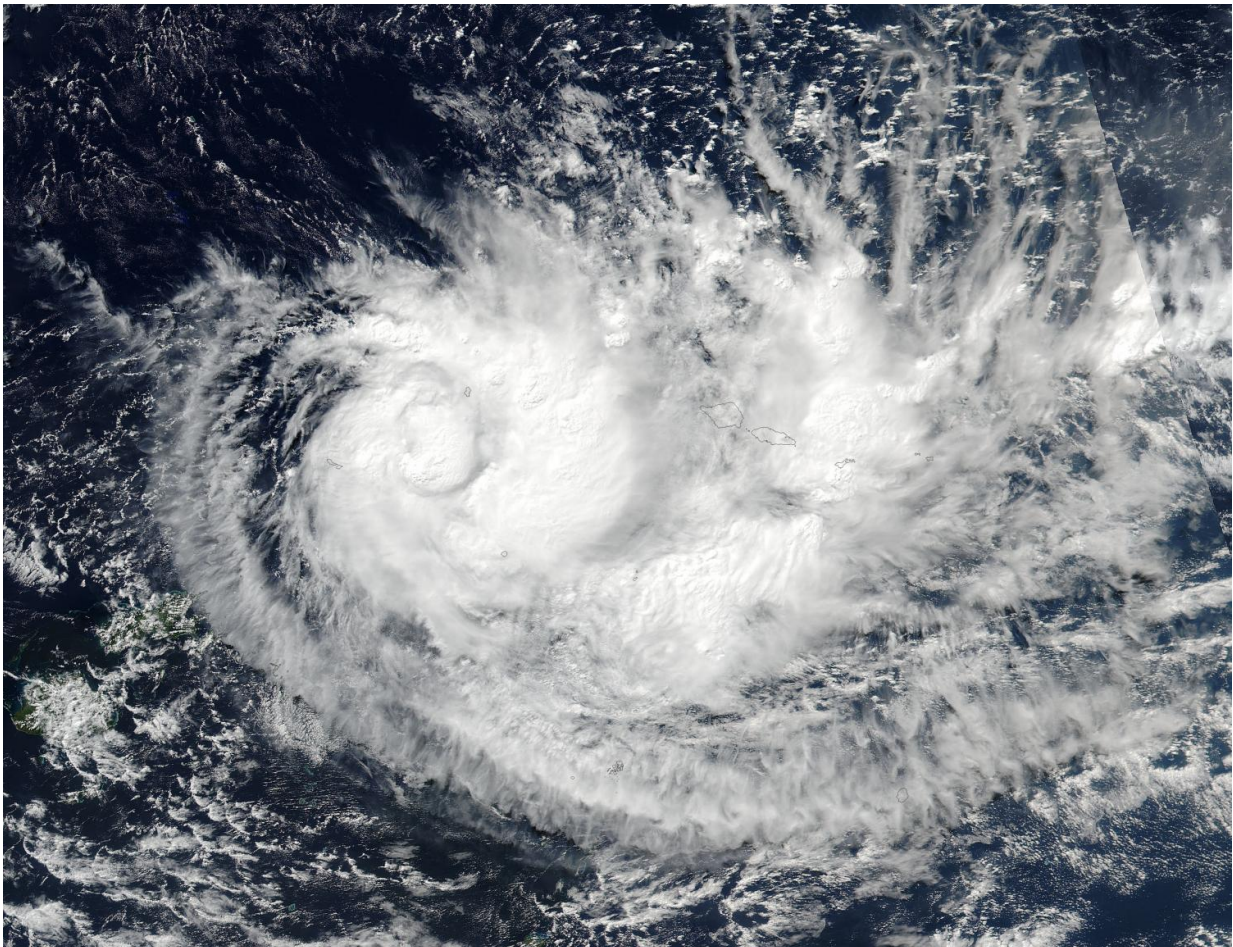


Tropical Cyclone Ella wrapped in NASA imagery

May 11 2017



On May 11 at 0136 UTC (May 10 at 9:36 p.m. EDT) NASA-NOAA's Suomi NPP satellite captured this visible image of Tropical Cyclone Ella in the South Pacific. Credit: NASA/NOAA

Tropical Cyclone Ella has large bands of thunderstorms wrapping around the center and from the east of center in imagery from the NASA-NOAA Suomi NPP satellite.

On May 11 at 0136 UTC (May 10 at 9:36 p.m. EDT) the Visible Infrared Imaging Radiometer Suite (VIIRS) instrument aboard NASA-NOAA's Suomi NPP [satellite](#) provided a visible-light image of Tropical Cyclone Ella in the South Pacific. Although an eye wasn't visible in the VIIRS image, microwave satellite imagery revealed a well-defined eye about 20 nautical miles in diameter.

In addition to visible imagery, animated multispectral satellite [imagery](#) showed developing thunderstorms with curved banding wrapping into the defined low level circulation center.

At 0300 UTC on May 11 (11 p.m. EDT, May 10) Tropical Cyclone Ella's maximum sustained winds increased to near 63 mph (55 knots/102 kph) as it continued moving to the west at 2.3 mph (2 knots /3.7 kph). It was centered near 14.4 degrees east latitude and 177.0 degrees west longitude, about 358 nautical miles northeast of Suva, Fiji.

The Joint Typhoon Warning Center said that "Environmental analysis indicates [Ella] is in an area of favorable sea surface temperatures and fair outflow, however, [vertical wind shear](#) is moderate (15 to 20 knots)."

Ella has is expected to track to the southwest over the next 12 to 24 hours as an elongated area of low pressure or trough moves into the region and re-orientes the steering flow. Ella is expected to weaken in three days as it approaches Fiji.

Fiji Meteorological Service issued a gale warning remains for Vanua Levu, Taveuni and nearby smaller islands. A strong wind [warning](#) remains in effect for Lau and Lomaiviti group and the eastern part of

Viti Levu.

For updated warnings and watches visit: <http://www.met.gov.fj/>.

Provided by NASA's Goddard Space Flight Center

Citation: Tropical Cyclone Ella wrapped in NASA imagery (2017, May 11) retrieved 29 June 2024 from <https://phys.org/news/2017-05-tropical-cyclone-ella-nasa-imagery.html>

This document is subject to copyright. Apart from any fair dealing for the purpose of private study or research, no part may be reproduced without the written permission. The content is provided for information purposes only.