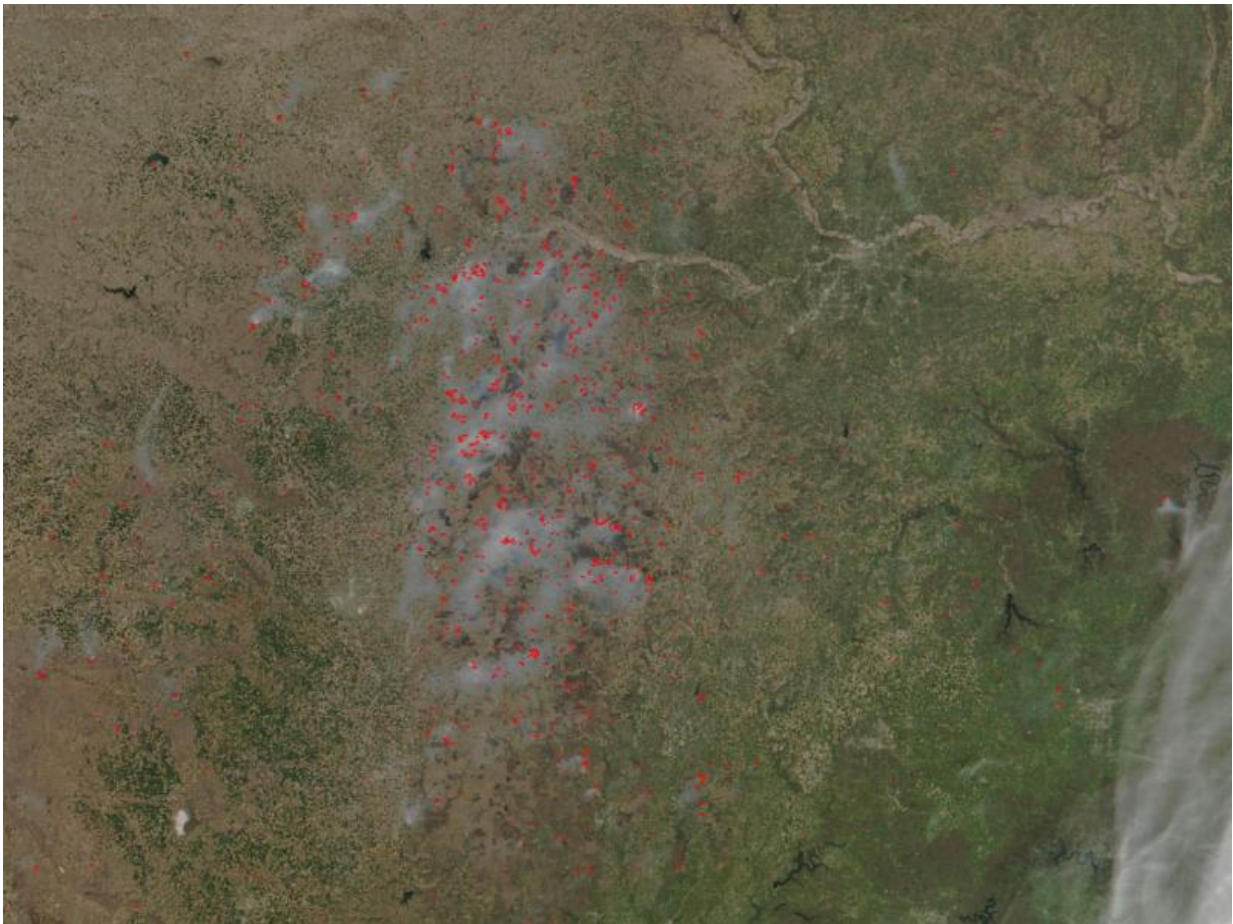


Image: Prescribed fires consume Kansas landscape

April 13 2017, by Lynn Jenner



NASA image courtesy Jeff Schmaltz LANCE/EOSDIS MODIS Rapid Response Team, GSFC

Most if not all the fires in this image taken by Suomi NPP satellite's VIIRS (Visible Infrared Imaging Radiometer Suite) instrument on April 11, 2017 are controlled fires set by farmers to manage land. Farmers in Kansas are allowed to burn grass every year to produce better grass for cattle. The grass burning typically occurs between March and mid-April on a yearly basis. The issue is with air quality. Air quality alerts are currently in place in Kansas and also in Nebraska as the smoke from the fire drifts in that direction.

The smoke released by any type of fire (forest, brush, crop, structure, tires, waste or wood burning) is a mixture of particles and chemicals produced by incomplete burning of carbon-containing materials. All smoke contains carbon monoxide, carbon dioxide and particulate matter (PM or soot). Smoke can contain many different chemicals, including aldehydes, acid gases, [sulfur dioxide](#), nitrogen oxides, [polycyclic aromatic hydrocarbons](#) (PAHs), benzene, toluene, styrene, metals and dioxins. The type and amount of particles and chemicals in smoke varies depending on what is burning, how much oxygen is available, and the burn temperature.

Provided by NASA

Citation: Image: Prescribed fires consume Kansas landscape (2017, April 13) retrieved 7 August 2024 from <https://phys.org/news/2017-04-image-consume-kansas-landscape.html>

This document is subject to copyright. Apart from any fair dealing for the purpose of private study or research, no part may be reproduced without the written permission. The content is provided for information purposes only.