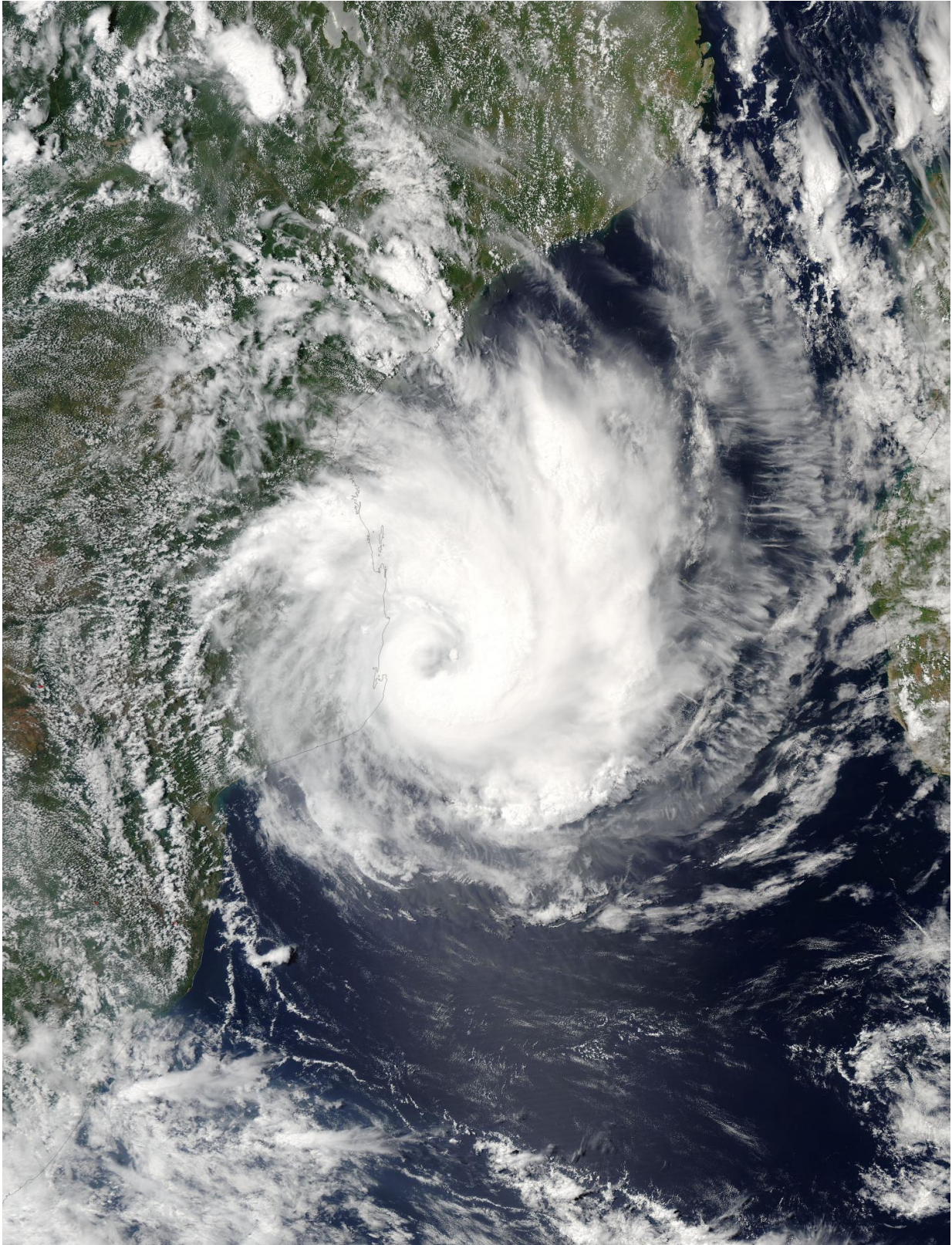


# **NASA sees Tropical Cyclone Dineo at Mozambique coast**

February 15 2017

---



At 6:15 a.m. EST (1115 UTC) on Feb. 15, NASA's Aqua satellite showed the

center of Tropical Cyclone Dineo just off the coast of Mozambique. Credit: NASA Goddard MODIS Rapid Response Team

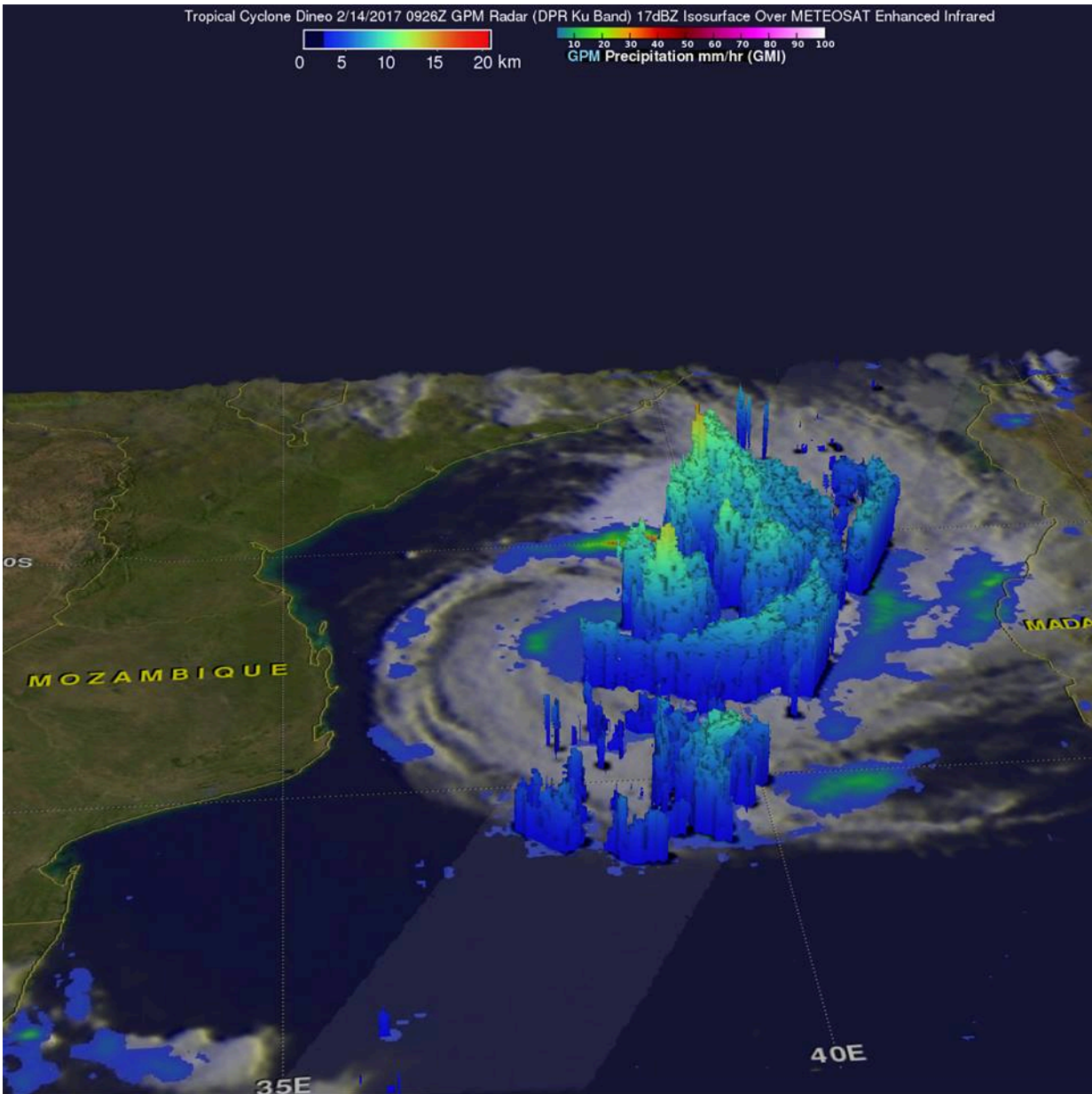
When NASA's Aqua satellite passed over Tropical Cyclone Dineo in the Mozambique Channel on Feb. 15, the storm was centered just off the coast of Mozambique and moving toward landfall.

At 6:15 a.m. EST (1115 UTC) on Feb. 15, the Moderate Resolution Imaging Spectroradiometer or MODIS instrument aboard NASA's Aqua satellite showed the center of Tropical Cyclone Dineo just off the coast of Mozambique. Visible light satellite imagery showed a well-defined storm with thick bands of thunderstorms wrapping around the low-level center. The MODIS image also showed a cloud-filled eye.

On Feb. 14, when the Global Precipitation Measurement mission or GPM core observatory satellite flew over Dineo at 0926 UTC (4:26 a.m. EST) and found very heavy precipitation in bands of thunderstorms on Dineo's northeastern side. The most intense rainfall was measured by GPM's Dual-Frequency Precipitation Radar (DPR) falling at a rate of over 132 mm (5.2 inches) per hour in the intense storms in the northeastern quadrant of the tropical cyclone.

On Feb. 15 at 1500 UTC (10 a.m. EST) Tropical Cyclone Dineo's maximum sustained winds were near 80.5 mph (70 knots/129.6 kph). Dineo appears to have reached its peak strength, according to the Joint Typhoon Warning Center. Dineo was located near 23.5 degrees south latitude and 35.8 degrees east longitude, about 235 nautical miles west-southwest of Europa Island, and just off the coast of Mozambique.





On Feb. 14, when the Global Precipitation Measurement mission or GPM core observatory satellite flew over Dineo at 0926 UTC (4:26 a.m. EST) and found very heavy precipitation in bands of thunderstorms on Dineo's northeastern side. Credit: NASA/JAXA, Hal Pierce

Dineo was moving to the west-southwest and the eye is expected to make

landfall by 2100 UTC (4 p.m. EST).

After making landfall in southern Mozambique Dineo is forecast to move west and weaken quickly.

Provided by NASA's Goddard Space Flight Center

Citation: NASA sees Tropical Cyclone Dineo at Mozambique coast (2017, February 15)  
retrieved 19 April 2024 from

<https://phys.org/news/2017-02-nasa-tropical-cyclone-dineo-mozambique.html>

This document is subject to copyright. Apart from any fair dealing for the purpose of private study or research, no part may be reproduced without the written permission. The content is provided for information purposes only.