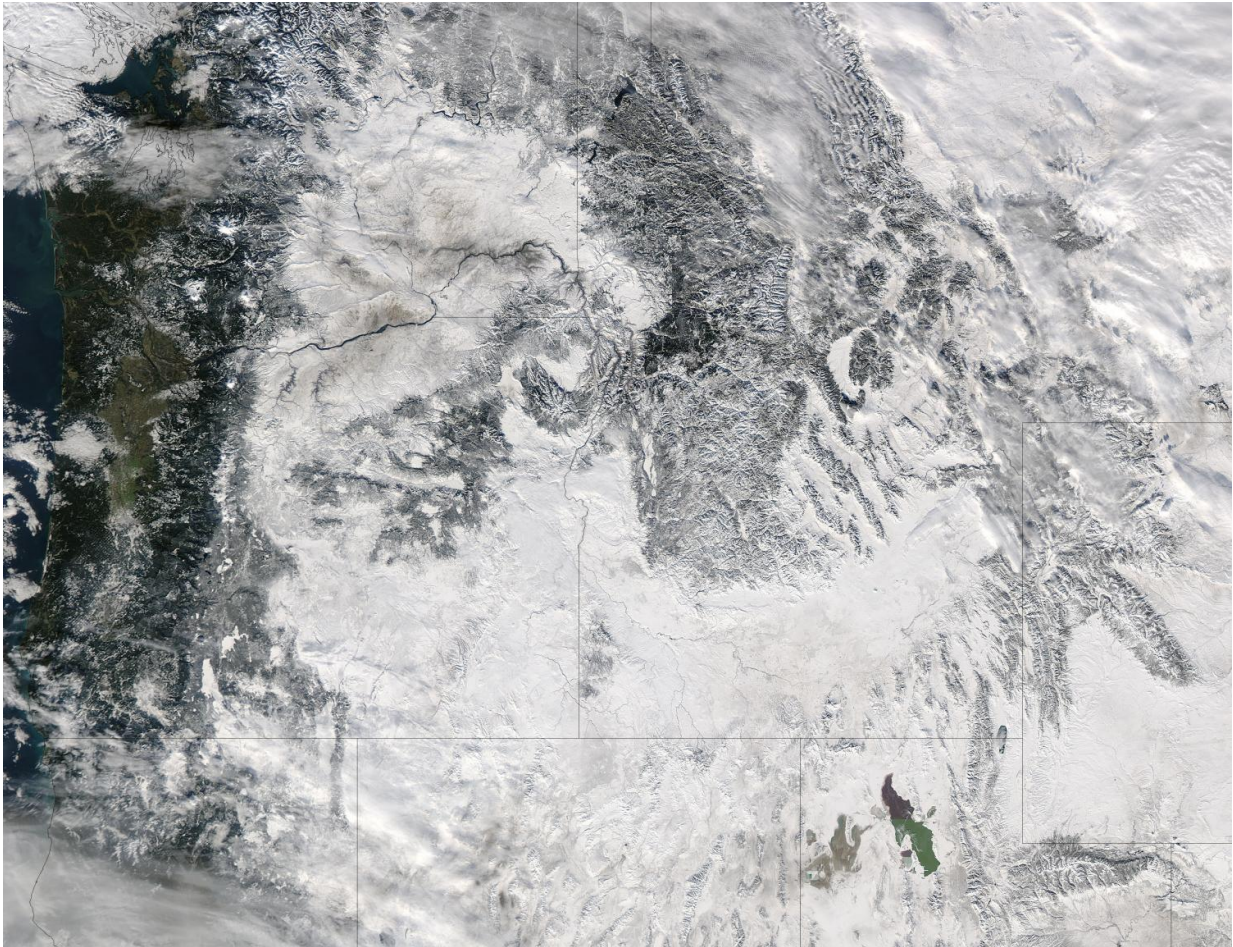


NASA sees storms affecting the western US

January 9 2017



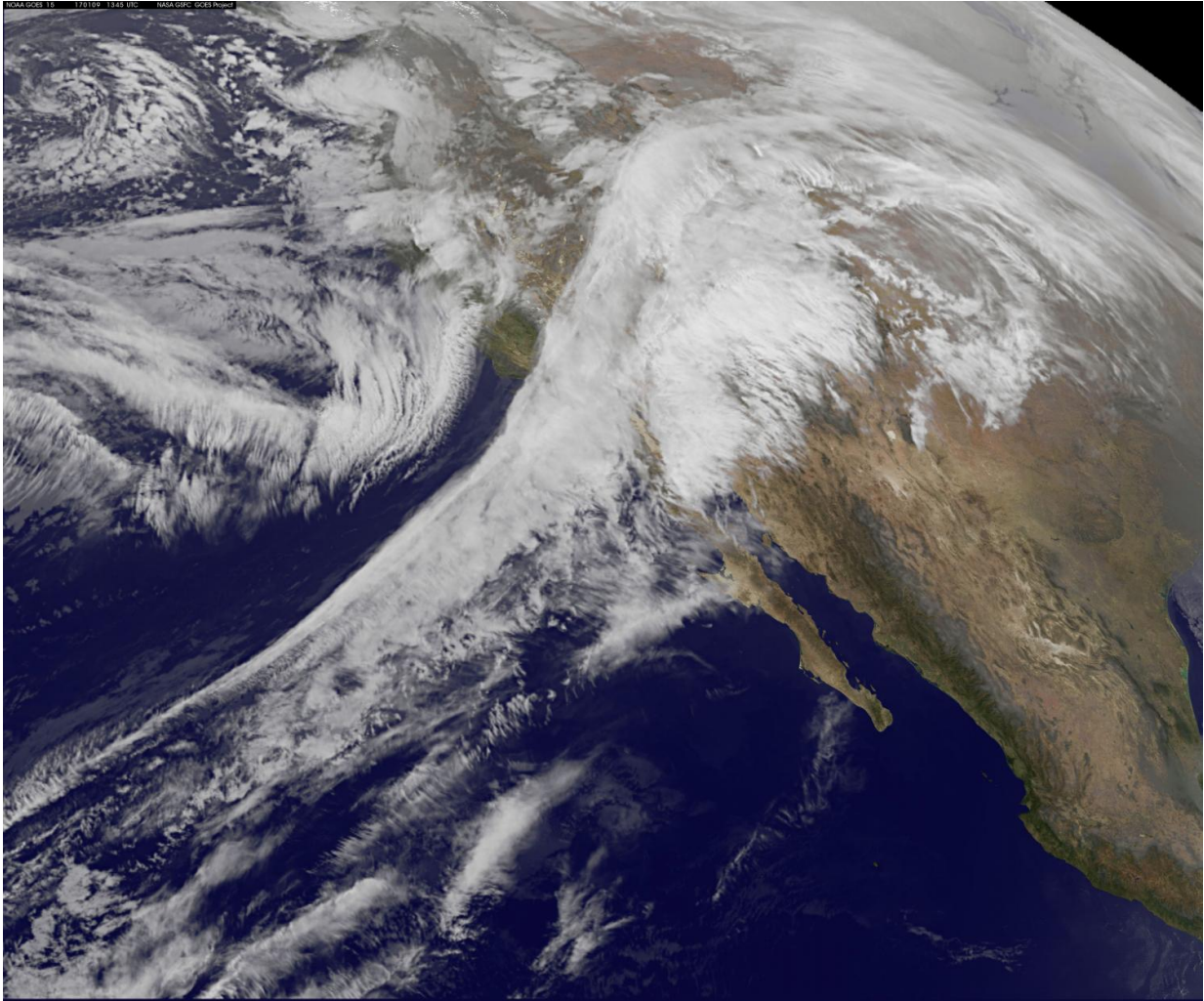
This visible image from NASA's Aqua satellite on Jan. 6, 2017, at 3:35 p.m. EST (20:35 UTC) shows snow cover in the US Pacific Northwest in Washington, Idaho, Oregon, northern California and Nevada. Credit: NASA Goddard MODIS Rapid Response

Extreme rain events have been affecting California and snow has blanketed the Pacific Northwest. NASA/NOAA's GOES Project created a satellite animation showing the storms affecting the region from January 6 through 9, 2017, and NASA's Aqua satellite captured a look at the snowfall.

At NASA's Goddard Space Flight Center in Greenbelt, Maryland, an animation of visible and infrared imagery from NOAA's GOES-West [satellite](#) showed a series of moisture-laden storms affecting California from Jan. 6 through Jan. 9, 2017. NOAA manages the GOES series of satellites and the NASA/NOAA GOES Project uses the satellite data to create animations and images. The animation shows a stream of storms affecting the U.S. West coast over that period, as a low pressure area center churned off of Canada's [west coast](#).

On January 9, another area of [low pressure](#) moved over Oregon, where the National Weather Service is forecasting heavy snows. The Eastern Douglas County Foothills, south central and southern Oregon Cascades, and Siskiyou Mountains were all under a Winter Storm Warning that calls for "6 to 10 inches possible above 3,000 feet and 1 to 2 feet possible above 5,000 feet."

On January 6 at 3:35 p.m. EST (20:35 UTC) The Moderate Resolution Imaging Spectroradiometer or MODIS instrument that flies aboard NASA's Aqua satellite captured an image of snow cover that blanketed Washington, Idaho, Oregon, northern California and Nevada.



This visible image of the storm system affecting the US Pacific Coast was taken from NOAA's GOES-West satellite on Jan. 9, 2017 at 8:35 a.m. EST (1345 UTC). Credit: NASA/NOAA GOES Project

On Monday, January 9, National Weather Service Weather Prediction Center (NWS WPC) in College Park Md. noted "At the lower elevations along the West Coast, rain will continue for many areas, some of which could be heavy and lead to areas of flooding or flash flooding."

It was the same week last year that the West Coast endured a similar

bout of very wet weather. Heavy rain affected the Pacific coast in 2016 during the same week from Jan. 5 through Jan 7, as a progression of storm systems in the Eastern Pacific Ocean hit southern California and generated flooding and mudslides.

NWC WPC stated in its Short Range Public Discussion on January 9, "A series of Pacific storm systems will continue to impact the western U.S. through midweek, bringing periods of rain and snow, some of which could be heavy, to many areas."

Provided by NASA's Goddard Space Flight Center

Citation: NASA sees storms affecting the western US (2017, January 9) retrieved 25 April 2024 from <https://phys.org/news/2017-01-nasa-storms-affecting-western.html>

This document is subject to copyright. Apart from any fair dealing for the purpose of private study or research, no part may be reproduced without the written permission. The content is provided for information purposes only.