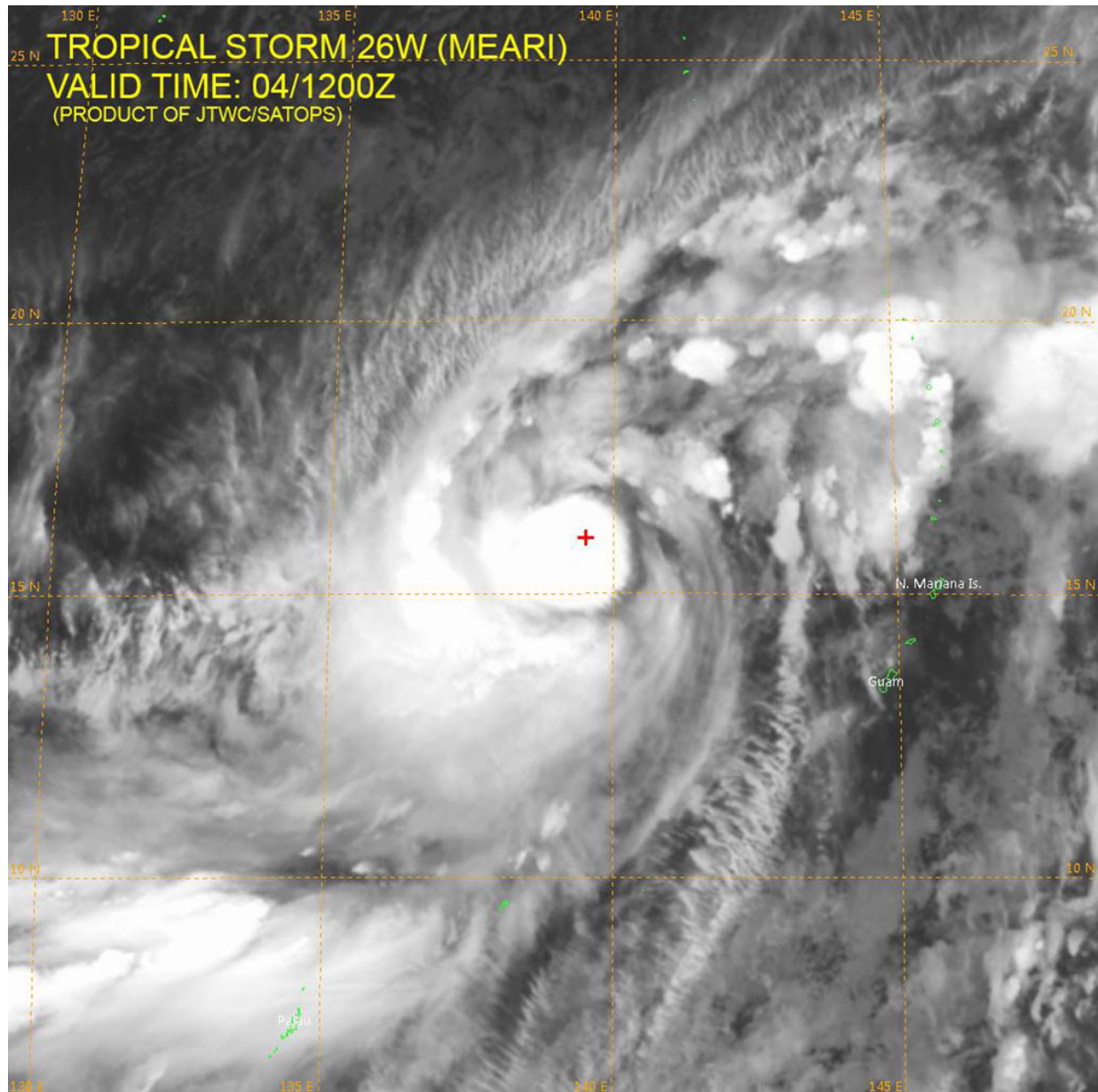


# Tropical Storm Meari forecast to intensify

November 4 2016



Satellite image of Meari. Credit: JTWC/SATOPS

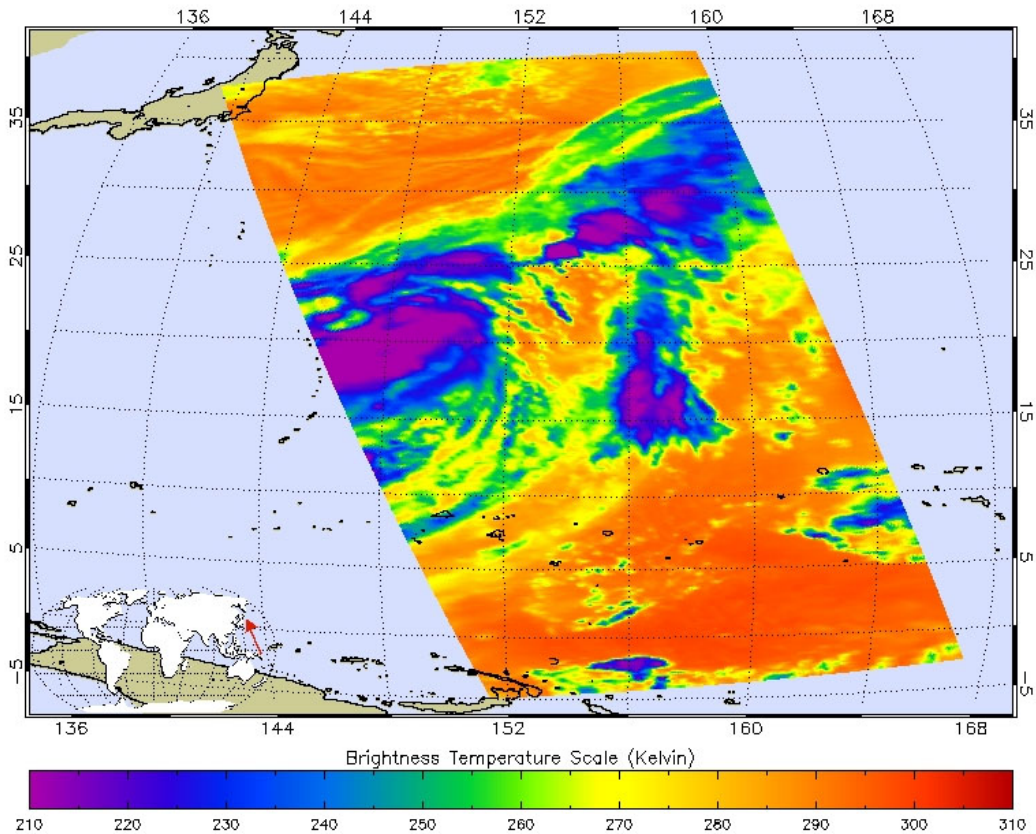
Tropical Storm Meari is currently located 331 miles north of Ulithi which is an atoll in the Caroline Islands of the western Pacific Ocean. The storm has tracked northeastward at 7 knots per hour over the past six hours.

Satellite imagery is showing an organized low-level circulation with the system wrapping tightly around itself. The tightly curved banding supports the current tracking forecast with high confidence. The current intensity of the winds in the storm is clocking at 45 to 55 knots. There is also a favorable environment within the storm for further development.

Meari is expected to continue tracking northeastward over the next 48 hours. The [vertical wind shear](#) is expected to remain low which will contribute to its steady intensification. The storm is currently forecast to peak in intensity at 85 knots (97 mph). No landmasses are currently being threatened by this storm. After reaching peak intensity Meari will start to weaken and veer northeast.

AIRS Level-1B Quick Browse Image

12.047  $\mu\text{m}$  Brightness Temperature Nov 04, 2016 02:59:22 UTC Granule 030



Granule Id - AIRS.2016.11.04.030.L1B.AIRS\_Rad.v5.0.23.0.R1630B234002.hdf

On November 4, 2016, NASA's Atmospheric Infrared Sounder (AIRS) instrument on NASA's Aqua satellite produced this false-color infrared image of Meari as it headed northeast. The image shows the temperature of Meari's cloud tops or the surface of Earth in cloud-free regions, with the most intense thunderstorms shown in purples and blues. Credit: NASA/JPL-Caltech

Provided by NASA's Goddard Space Flight Center

Citation: Tropical Storm Meari forecast to intensify (2016, November 4) retrieved 18 April 2024

from <https://phys.org/news/2016-11-tropical-storm-meari.html>

This document is subject to copyright. Apart from any fair dealing for the purpose of private study or research, no part may be reproduced without the written permission. The content is provided for information purposes only.