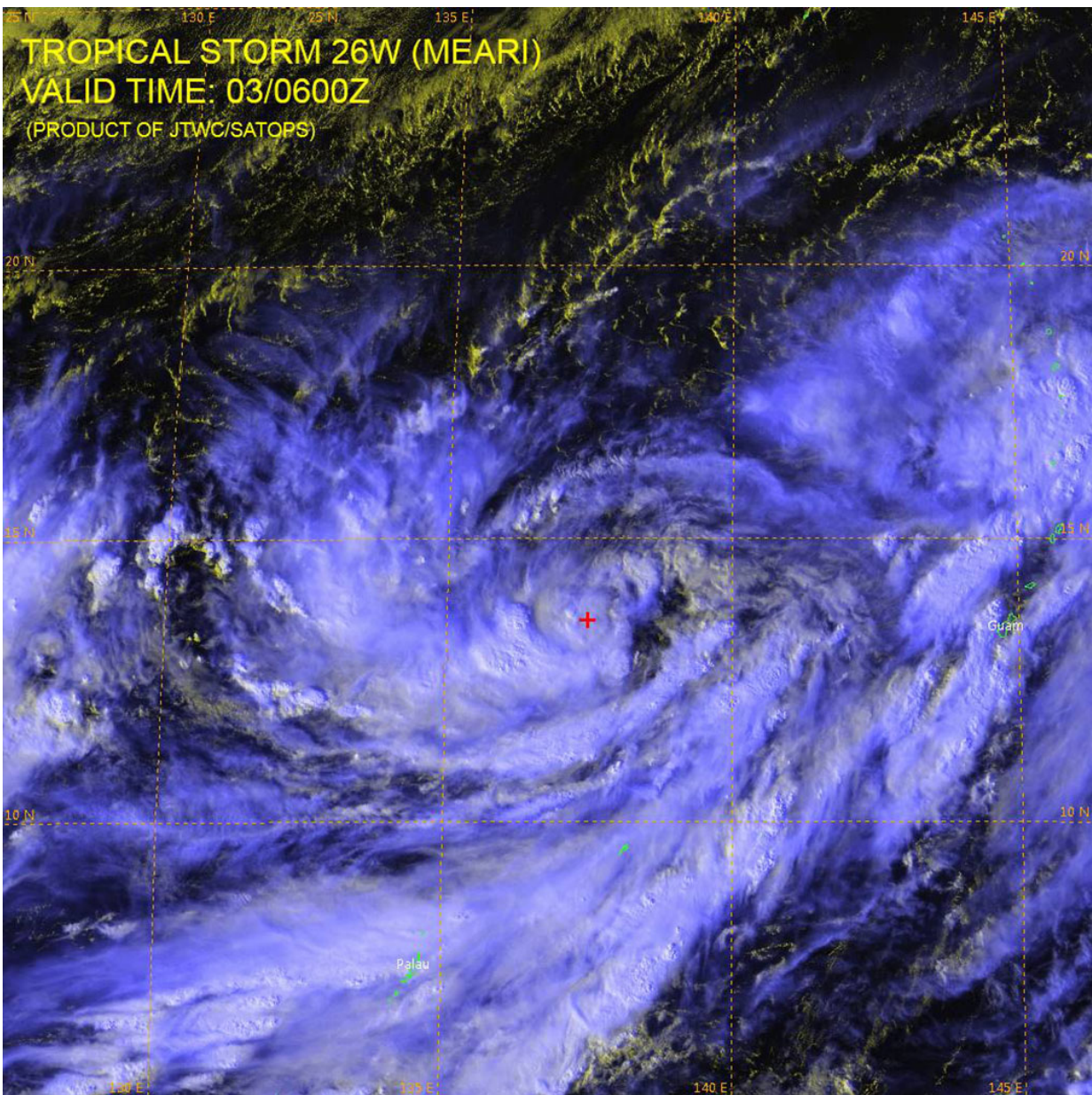


Tropical depression morphs into Meari in one day

November 3 2016



Tropical Storm Meari. Credit: JTWC/SATOPS

Tropical Storm Meari began as a tropical depression numbered 26W north-northwest of Yap in the early morning hours of November 3, 2016. Later that day it intensified into Tropical Storm Meari.

Currently Meari is 295 miles north of Yap and 500 miles west of Guam. Its [maximum sustained winds](#) at present at 40 mph. It is quasi-stationary and has relocated to the northeast. Forecasters expect Meari to gradually turn west to west-northwest over the next few days and increase in forward speed. The storm is expected to reach typhoon strength over the weekend.

All tropical storms are tracked throughout the weekend on the NASA's Hurricane page on Facebook located here:

<https://www.facebook.com/NASAHurricane>

Provided by NASA's Goddard Space Flight Center

Citation: Tropical depression morphs into Meari in one day (2016, November 3) retrieved 24 April 2024 from <https://phys.org/news/2016-11-tropical-depression-morphs-meari-day.html>

This document is subject to copyright. Apart from any fair dealing for the purpose of private study or research, no part may be reproduced without the written permission. The content is provided for information purposes only.