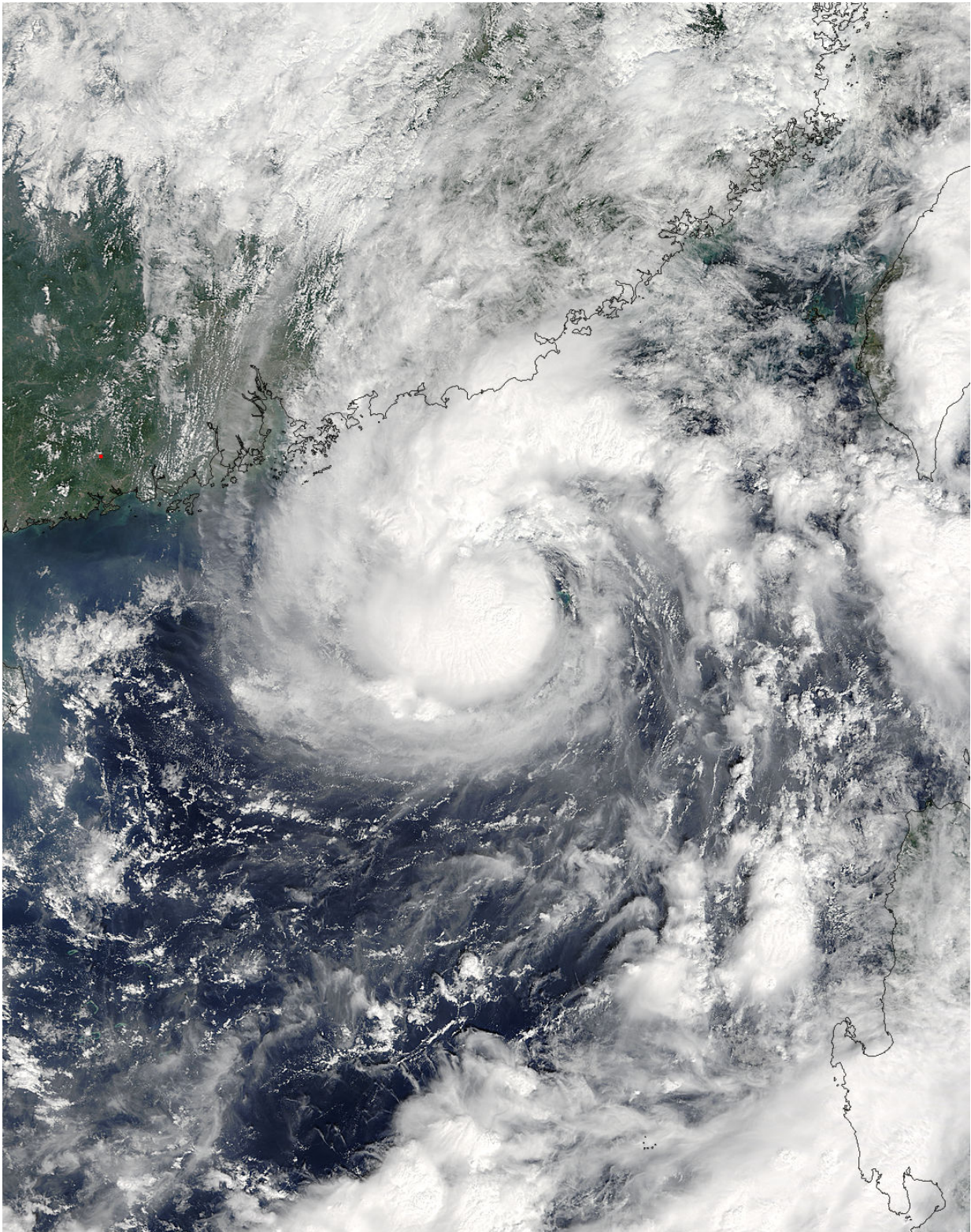


NASA sees Tropical Storm Aere drifting in the South China Sea

October 7 2016



On Oct. 7 at 02:50 UTC NASA's Terra satellite captured this visible image of Tropical Storm Aere (22W) off southeast China. Credit: NASA Goddard

MODIS Rapid Response Team

Tropical Storm Aere was drifting in the South China Sea, just south of Hong Kong, as NASA's Terra satellite passed overhead.

As a result of the storm's close proximity to land, the Central Weather Bureau of Hong Kong issued Standby signal #1.

On Oct. 7 at 02:50 UTC (Oct. 6 at 10:50 p.m. EDT) the Moderate Imaging Spectroradiometer (MODIS) instrument aboard NASA's Terra satellite captured a visible image of Tropical Storm Aere off southeast China. Thunderstorms circled the well-defined center of the storm while a large band of thunderstorms feeding into the center stretched to the north and northeast of the center over the coast of China.

At 0900 UTC (5 a.m. EDT) on Oct. 7, Tropical Storm Aere's maximum sustained winds were near 52 mph (45 knots/83 kph). Aere continues to intensify while over warm [sea surface temperatures](#).

It was about 148 nautical miles southeast of Hong Kong, near 20.8 degrees north latitude and 116.3 degrees east longitude. Aere was moving to the north-northwest at 4.6 mph (4 knots/7.4 kph).

There is currently no big weather system to drive the track of Aere, and the Joint Typhoon Warning Center said that a developing sub-tropical ridge (elongated area) of high pressure building over China will push the storm to the west. Current forecast track moves Aere south of Hainan Island, China by Oct. 12.

Provided by NASA's Goddard Space Flight Center

Citation: NASA sees Tropical Storm Aere drifting in the South China Sea (2016, October 7)
retrieved 27 September 2023 from
<https://phys.org/news/2016-10-nasa-tropical-storm-aere-drifting.html>

This document is subject to copyright. Apart from any fair dealing for the purpose of private study or research, no part may be reproduced without the written permission. The content is provided for information purposes only.