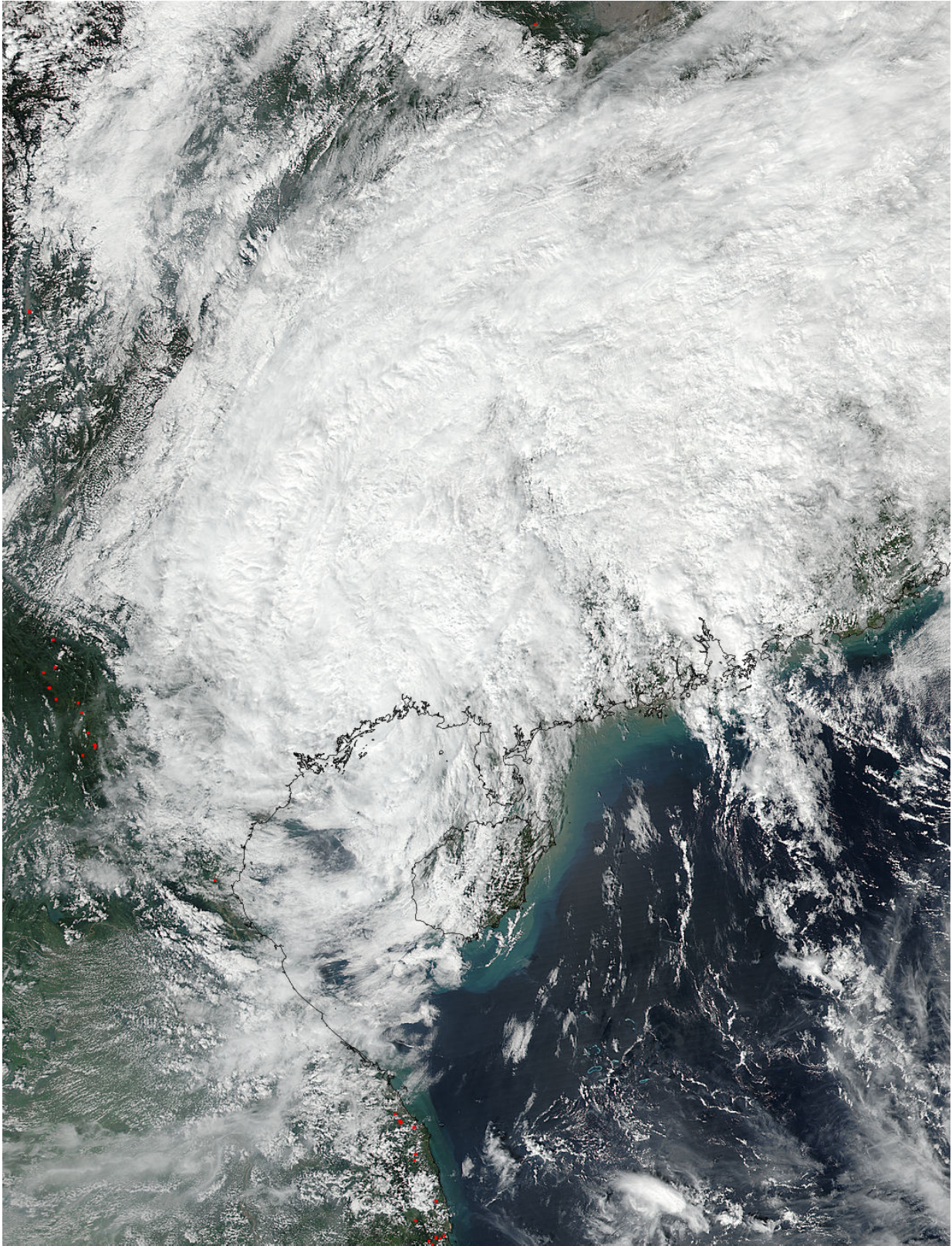


# NASA catches Tropical Depression Sarika's landfall

October 19 2016

---



On Oct. 19 at 1:35 a.m. EDT (05:35 UTC) NASA-NOAA's Suomi NPP satellite



captured Tropical Depression Sarika making landfall in mainland China. Credit: NOAA/NASA Goddard MODIS Rapid Response Team

Tropical Depression Sarika made landfall early on Oct. 19 as NASA-NOAA's Suomi NPP satellite passed overhead and provided an image of the storm.

On Oct. 19 at 1:35 a.m. EDT (05:35 UTC) the Visible Infrared Imaging Radiometer Suite (VIIRS) instrument aboard the NASA-NOAA Suomi NPP satellite captured Tropical Depression Sarika making [landfall](#) in southern part of the Guangxi province of mainland China, near the border of Vietnam.

At 5 a.m. EDT (0900 UTC) on Oct. 19 the Joint Typhoon Warning Center (JTWC) issued their final bulletin on Sarika. At that time, Sarika's maximum sustained winds were near 34.5 mph (30 knots /55.5 kph). It was moving to the north-northwest at 8 mph (7 knots/13 kph). At that time, the center of the depression was about 130 nautical miles east-northeast of Hanoi, Vietnam near 21.7 degrees north latitude and 108.1 degrees east longitude.

Sarika is expected to dissipate over land, however, there is a slight chance its remnants may reemerge over the Gulf of Tonkin.

Provided by NASA's Goddard Space Flight Center

Citation: NASA catches Tropical Depression Sarika's landfall (2016, October 19) retrieved 18 April 2024 from <https://phys.org/news/2016-10-nasa-tropical-depression-sarika-landfall.html>

This document is subject to copyright. Apart from any fair dealing for the purpose of private

study or research, no part may be reproduced without the written permission. The content is provided for information purposes only.