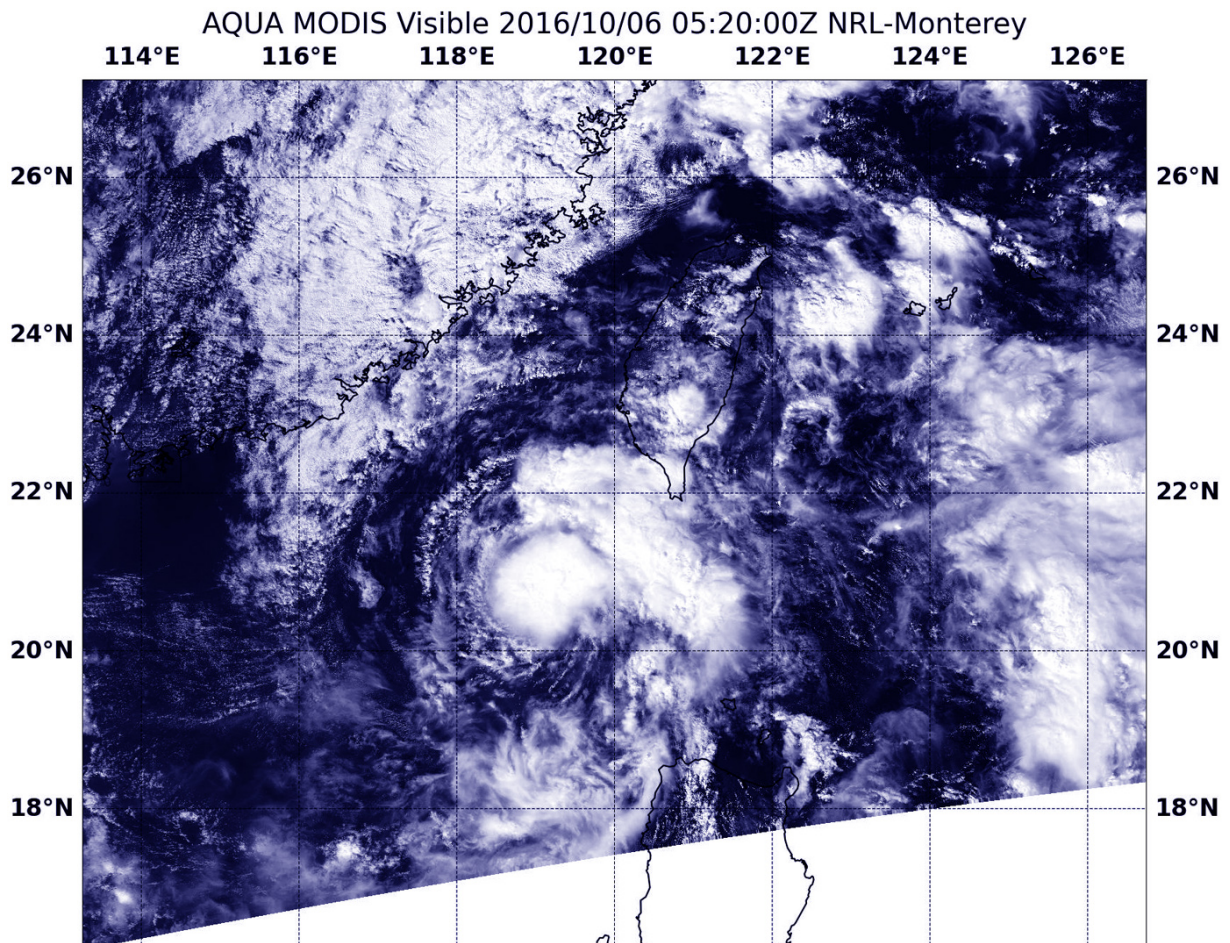


# NASA sees Tropical Depression Aere moving through South China Sea

October 6 2016



NASA's Aqua satellite saw Tropical Depression Aere on Oct. 6 at 1:20 a.m. EDT (0520 UTC). The image showed strong thunderstorms around the center of circulation, but the center and in the northeastern quadrant. Credit: NASA / NRL

Tropical Depression Area, formerly known as 22W continued on a western track and entered the South China Sea as NASA's Aqua satellite captured a visible image of the storm.

The Moderate Resolution Imaging Spectroradiometer (MODIS) on NASA's Aqua satellite captured a [visible image](#) of Tropical Depression Aere on Oct. 6 at 1:20 a.m. EDT (0520 UTC). The image showed a symmetric storm with strong thunderstorms tightly wound around the center of circulation and in the northeastern quadrant.

At 11 a.m. EDT (1500 UTC) Tropical Depression Aere had maximum sustained winds near 34.5 mph (30 knots/55.5 kph). It was centered near 20.8 degrees north latitude and 118.7 degrees east longitude, about 27 nautical miles south of Hong Kong, China. Aere is moving to the northwest at 17 mph (15 knots/28 kph).

Tropical Depression Aere is forecast to become a [tropical storm](#) and track to the west then west-southwest over the next several days and move through the South China Sea, staying south of Hainan Island, China.

Provided by NASA's Goddard Space Flight Center

Citation: NASA sees Tropical Depression Aere moving through South China Sea (2016, October 6) retrieved 20 June 2024 from <https://phys.org/news/2016-10-nasa-tropical-depression-aere-south.html>

This document is subject to copyright. Apart from any fair dealing for the purpose of private study or research, no part may be reproduced without the written permission. The content is provided for information purposes only.