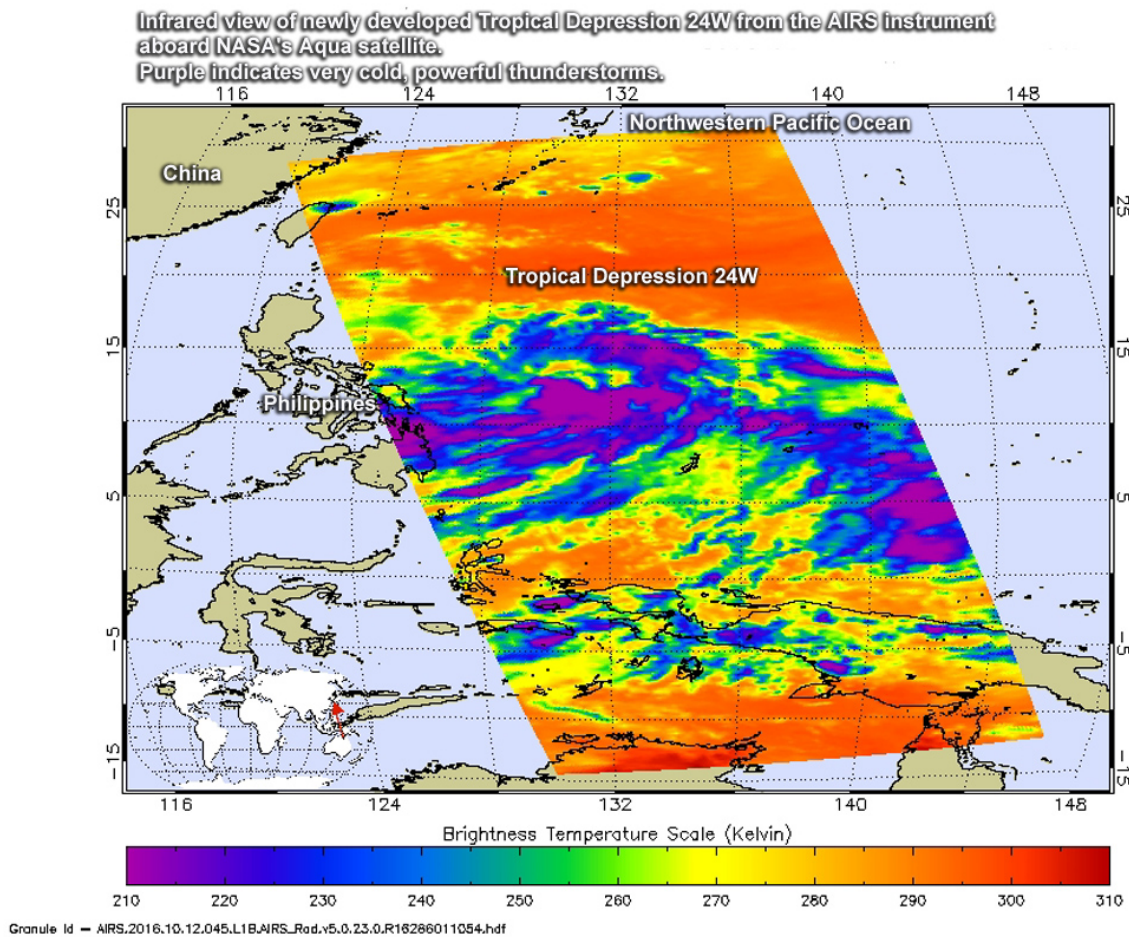


NASA spots newly developed Tropical Depression 24W, east of Philippines

October 12 2016



On Oct.12 at 12:29 a.m. EDT (429 UTC) when NASA's Aqua satellite looked at newly formed Tropical Depression 24W, east of the Philippines. Credit: NASA JPL, Ed Olsen

NASA's Aqua satellite flew over the northwestern Pacific Ocean as Tropical Depression 24W formed and analyzed the storm in infrared light.

The Atmospheric Infrared Sounder or AIRS instrument that flies aboard NASA's Aqua satellite analyzed Tropical Depression 24W (TD24W) in [infrared light](#) at Oct.12 at 12:29 a.m. EDT (429 UTC). Coldest cloud top temperatures exceeded minus 63 degrees Fahrenheit (minus 53 degrees Celsius) in bands of thunderstorms east of the center from the northeastern to the southern quadrants. Storms with temperatures that cold are high in the troposphere and NASA research has shown they have the ability to generate heavy rain.

The Joint Typhoon Warning Center (JTWC) bulletin on Oct. 12 at 11 a.m. EDT (1500 UTC) noted that TD24W has maximum sustained winds near 30 knots (34.5 mph/55.5 kph). It was located near 13.2 degrees north latitude and 129.8 degrees east longitude, about 526 nautical miles east of Manila, Philippines. TD24W was moving to the west-northwest at 11 knots (12.6 mph/20.3 kph).

JTWC forecasts 24W to strengthen into a typhoon and make landfall in Luzon, northern Philippines sometime on Oct. 15.

Provided by NASA's Goddard Space Flight Center

Citation: NASA spots newly developed Tropical Depression 24W, east of Philippines (2016, October 12) retrieved 27 April 2024 from <https://phys.org/news/2016-10-nasa-newly-tropical-depression-24w.html>

This document is subject to copyright. Apart from any fair dealing for the purpose of private study or research, no part may be reproduced without the written permission. The content is provided for information purposes only.