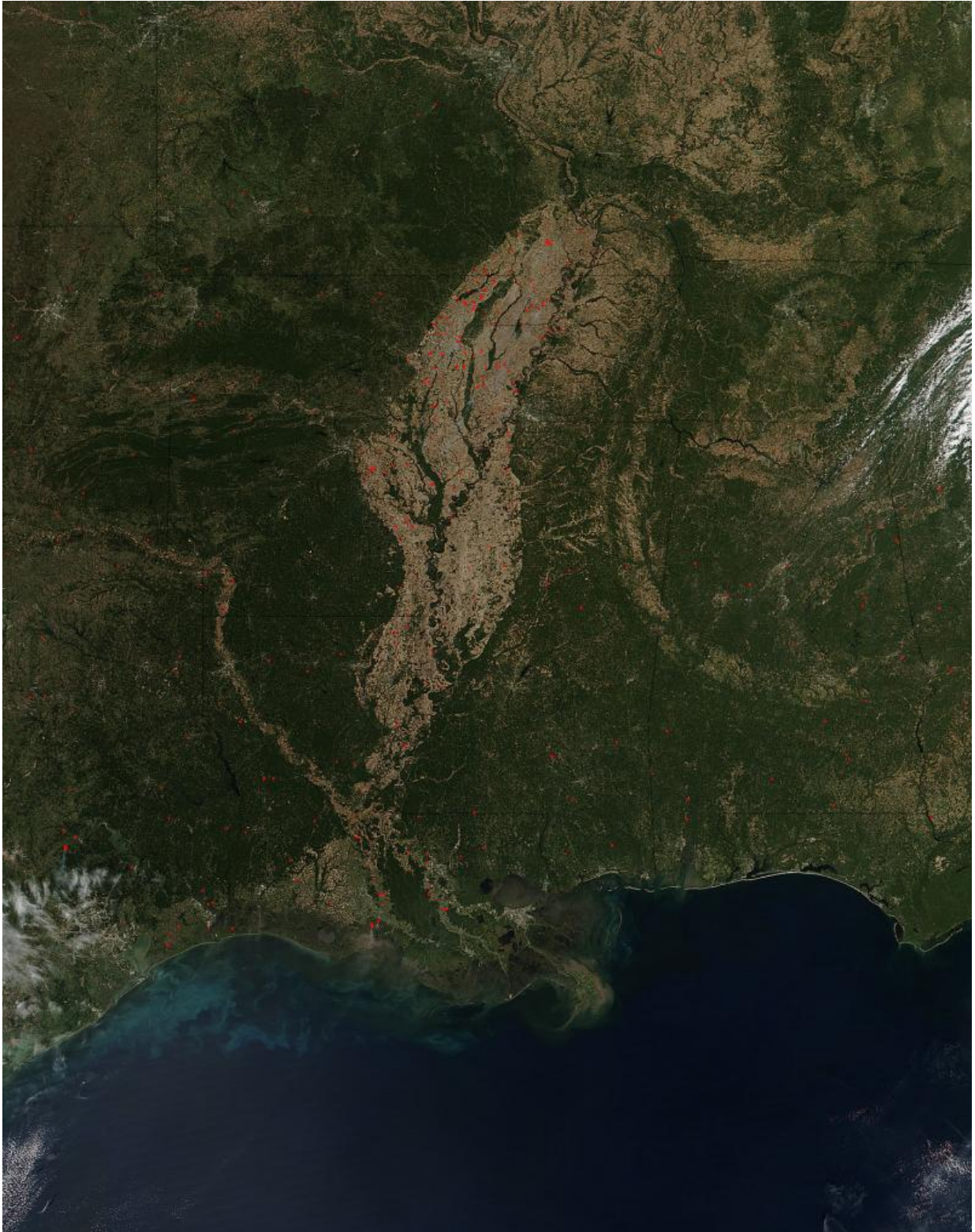


# **Image: Fires overtake landscape in the Mississippi Valley**

October 12 2016, by Lynn Jenner

---



Credit: Jeff Schmaltz LANCE/EOSDIS MODIS Rapid Response Team, GSFC

The Mississippi Valley (and total Southeast U.S. including the Plains) actually sees more fires every fires season than the Western States which tend to receive a lot of national attention. The main difference is that the fires in the Southeast are smaller and less intense than the monster fires of the West. Dozens of fires can be seen in this image stretching across the Mississippi Valley into the Plains.

This natural-color image of the Mississippi Valley was captured by the Suomi NPP satellite using the VIIRS (Visible Infrared Imaging Radiometer Suite) instrument on October 08, 2016. Actively burning areas, detected by MODIS's thermal bands, are outlined in red.

Provided by NASA

Citation: Image: Fires overtake landscape in the Mississippi Valley (2016, October 12) retrieved 3 May 2024 from <https://phys.org/news/2016-10-image-landscape-mississippi-valley.html>

<p>This document is subject to copyright. Apart from any fair dealing for the purpose of private study or research, no part may be reproduced without the written permission. The content is provided for information purposes only.</p>
--