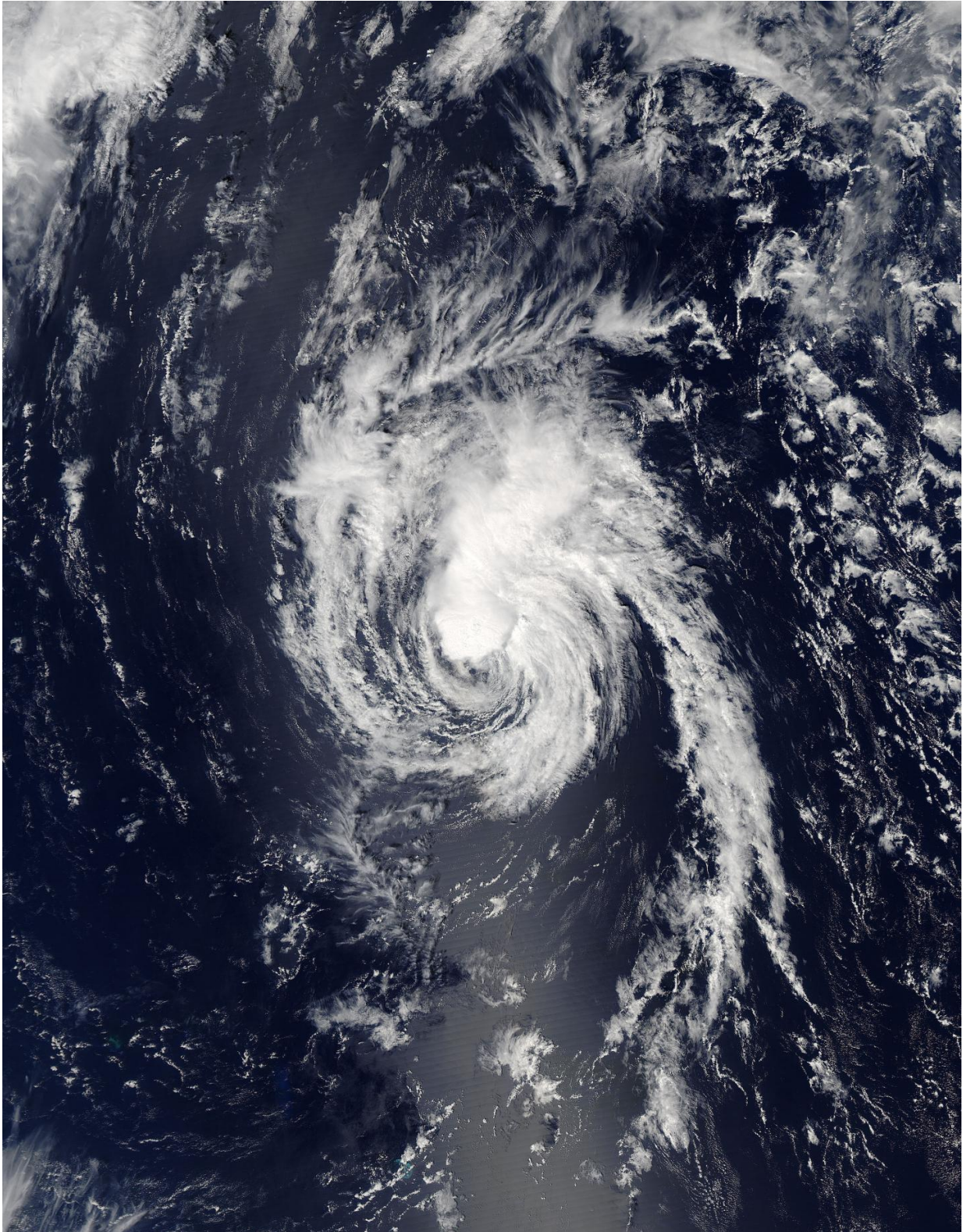


NASA sees Tropical Storm Lester moving away from Hawaiian islands

September 6 2016



NASA's Aqua satellite captured this image of Tropical Storm Lester in the

Central Pacific on Sept. 6 at 00:10 UTC (Sept. 5 at 8:10 p.m. EDT). Credit: NASA Goddard MODIS Rapid Response Team

Tropical Storm Lester passed the Hawaiian Islands over the holiday weekend of Sept 4 through 6 and NASA's Aqua satellite captured an image of the weakening storm over 900 miles away from Honolulu.

The Moderate Resolution Imaging Spectroradiometer or MODIS instrument aboard NASA's Aqua satellite captured a visible image of Tropical Storm Lester in the Central Pacific on Sept. 6 at 00:10 UTC (Sept. 5 at 8:10 p.m. EDT/2 p.m. HST). The image showed a concentration of clouds and storms around the center of circulation, but the western quadrant was devoid of strong thunderstorms. NOAA's GOES-15 imagery continues to show Tropical Storm Lester with a partly exposed low-level circulation center.

Since the MODIS image, NOAA's Central Pacific Hurricane Center noted "The higher cloud tops have rotated around to the west side of the system."

At 11 a.m. EDT (500 a.m. HST/1500 UTC), the center of Tropical Storm Lester was located near 33.2 degrees north latitude and 166.0 degrees west longitude, about 960 miles (1,545 km) north-northwest of Honolulu, Hawaii.

NOAA's Central Pacific Hurricane Center (CPHC) said Lester is moving toward the north near 12 mph (19 kph) and this motion will continue through the day today. The cyclone will turn toward the northeast on Wednesday with an increase in forward speed.

Maximum sustained winds are near 60 mph (95 kph) with higher gusts.

The estimated minimum central pressure is 999 millibars.

Some weakening is forecast during the next 48 hours as Lester transitions to a post-tropical low.

For updated forecasts on Lester, visit the CPHC website:

<http://www.prh.noaa.gov/cphc>

Provided by NASA's Goddard Space Flight Center

Citation: NASA sees Tropical Storm Lester moving away from Hawaiian islands (2016, September 6) retrieved 16 August 2024 from <https://phys.org/news/2016-09-nasa-tropical-storm-lester-hawaiian.html>

This document is subject to copyright. Apart from any fair dealing for the purpose of private study or research, no part may be reproduced without the written permission. The content is provided for information purposes only.