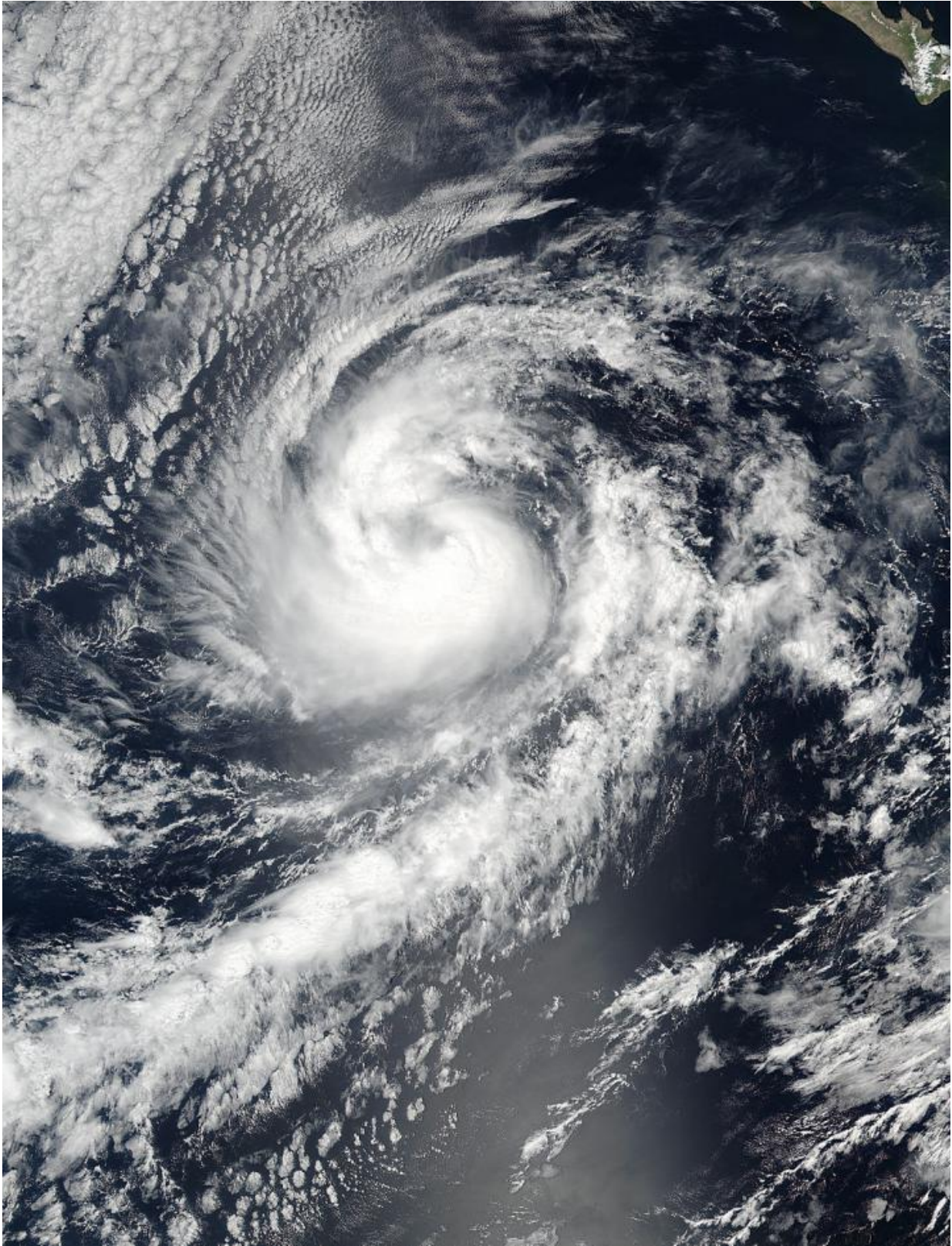


# NASA follows Hurricane Orlene in the Eastern Pacific

September 12 2016

---



At 5: p.m. EDT (2100 UTC) on Sept. 11, NASA-NOAA's Suomi NPP satellite

captured an image of Hurricane Orlene in the Eastern Pacific Ocean. Credit: NASA Goddard Rapid Response Team

The sixteenth tropical depression of the Eastern Pacific Ocean Hurricane Season formed on Saturday, Sept. 10 at 11 p.m. EDT and became a hurricane named Orlene early on Sept. 12. NASA-NOAA's Suomi NPP satellite captured an image of the strengthening storm.

At 5:00 p.m. EDT (2100 UTC) on Sept. 11, 2016, NASA-NOAA's Suomi NPP satellite passed over Orlene when it was a strong tropical storm. The Visible Infrared Imaging Radiometer Suite (VIIRS) instrument aboard the satellite captured a [visible image](#) of the storm.

Using the Suomi NPP imagery and other satellite data, the National Hurricane Center noted "visible, infrared, and microwave [satellite](#) images indicate that Orlene continues to become more organized. The cyclone has well-defined curved bands, and a recent SSMIS image showed that it has a mid-level eye feature."

At 5 a.m. EDT (2 a.m. PDT/0900 UTC), the center of Hurricane Orlene was located near 17.1 degrees north latitude and 119.1 degrees west longitude.

The National Hurricane Center (NHC) said that Orlene is moving toward the northwest near 9 mph (15 kph). A turn toward the north-northwest and then north with a significant decrease in forward speed is expected during the next couple of days. Maximum sustained winds have increased to near 80 mph (130 kph) with higher gusts. Additional strengthening is forecast during the next day or so.

For additional updates on Orlene, visit the NHC website:

<http://www.nhc.noaa.gov>.

Provided by NASA's Goddard Space Flight Center

Citation: NASA follows Hurricane Orlene in the Eastern Pacific (2016, September 12) retrieved 25 April 2024 from [https://phys.org/news/2016-09-nasa-hurricane-orlene-eastern-pacific\\_1.html](https://phys.org/news/2016-09-nasa-hurricane-orlene-eastern-pacific_1.html)

This document is subject to copyright. Apart from any fair dealing for the purpose of private study or research, no part may be reproduced without the written permission. The content is provided for information purposes only.