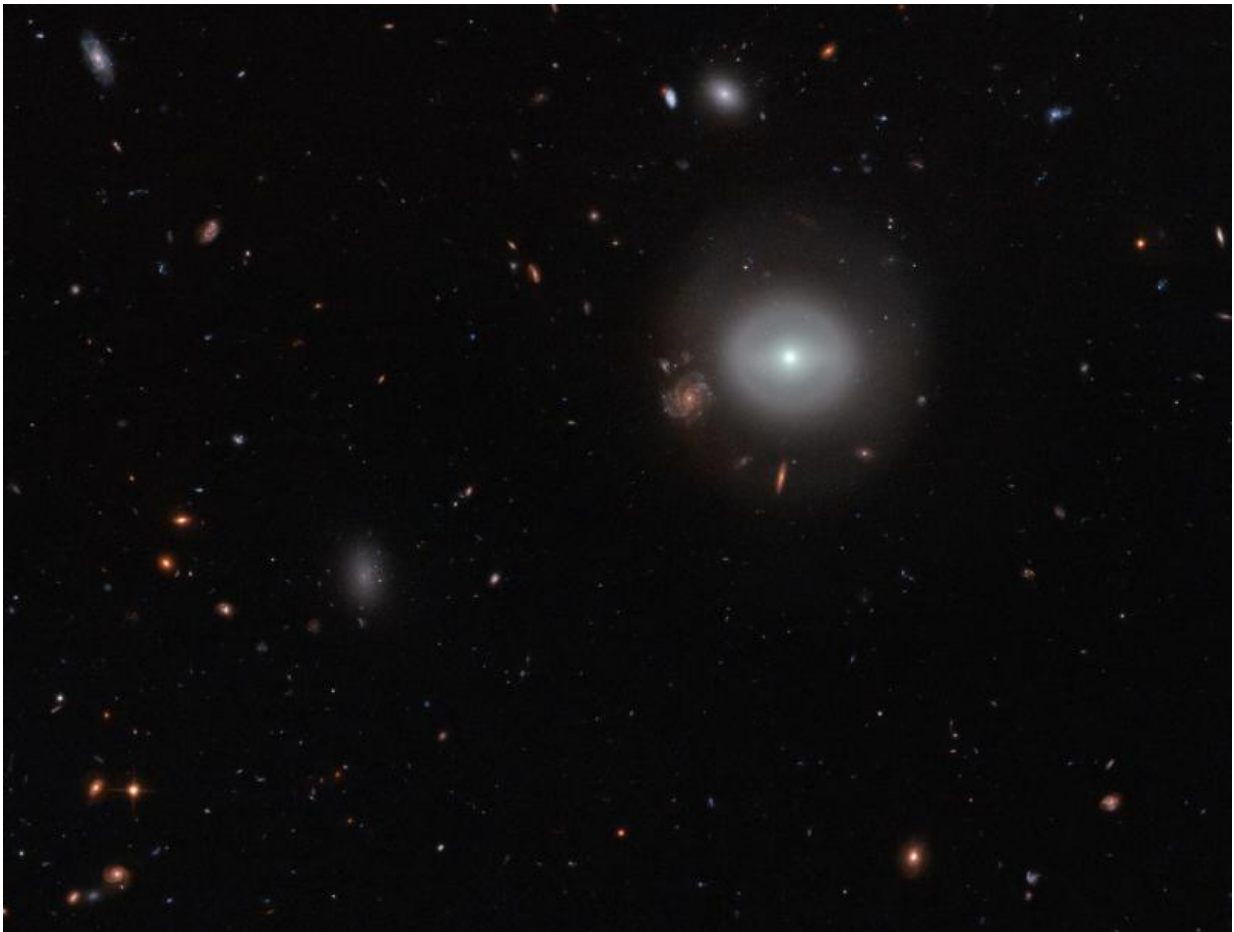


Image: Hubble finds a lenticular galaxy standing out in the crowd

September 19 2016



Credit: NASA/ESA/Hubble; acknowledgements: Judy Schmidt (Geckzilla)

A lone source shines out brightly from the dark expanse of deep space,

glowing softly against a picturesque backdrop of distant stars and colorful galaxies.

Captured by the NASA/ESA Hubble Space Telescope's Advanced Camera for Surveys (ACS), this scene shows PGC 83677, a lenticular galaxy—a galaxy type that sits between the more familiar elliptical and spiral varieties.

It reveals both the relatively calm outskirts and intriguing core of PGC 83677. Here, studies have uncovered signs of a monstrous black hole that is spewing out high-energy X-rays and ultraviolet light.

Provided by NASA

Citation: Image: Hubble finds a lenticular galaxy standing out in the crowd (2016, September 19) retrieved 12 August 2024 from <https://phys.org/news/2016-09-image-hubble-lenticular-galaxy-crowd.html>

This document is subject to copyright. Apart from any fair dealing for the purpose of private study or research, no part may be reproduced without the written permission. The content is provided for information purposes only.