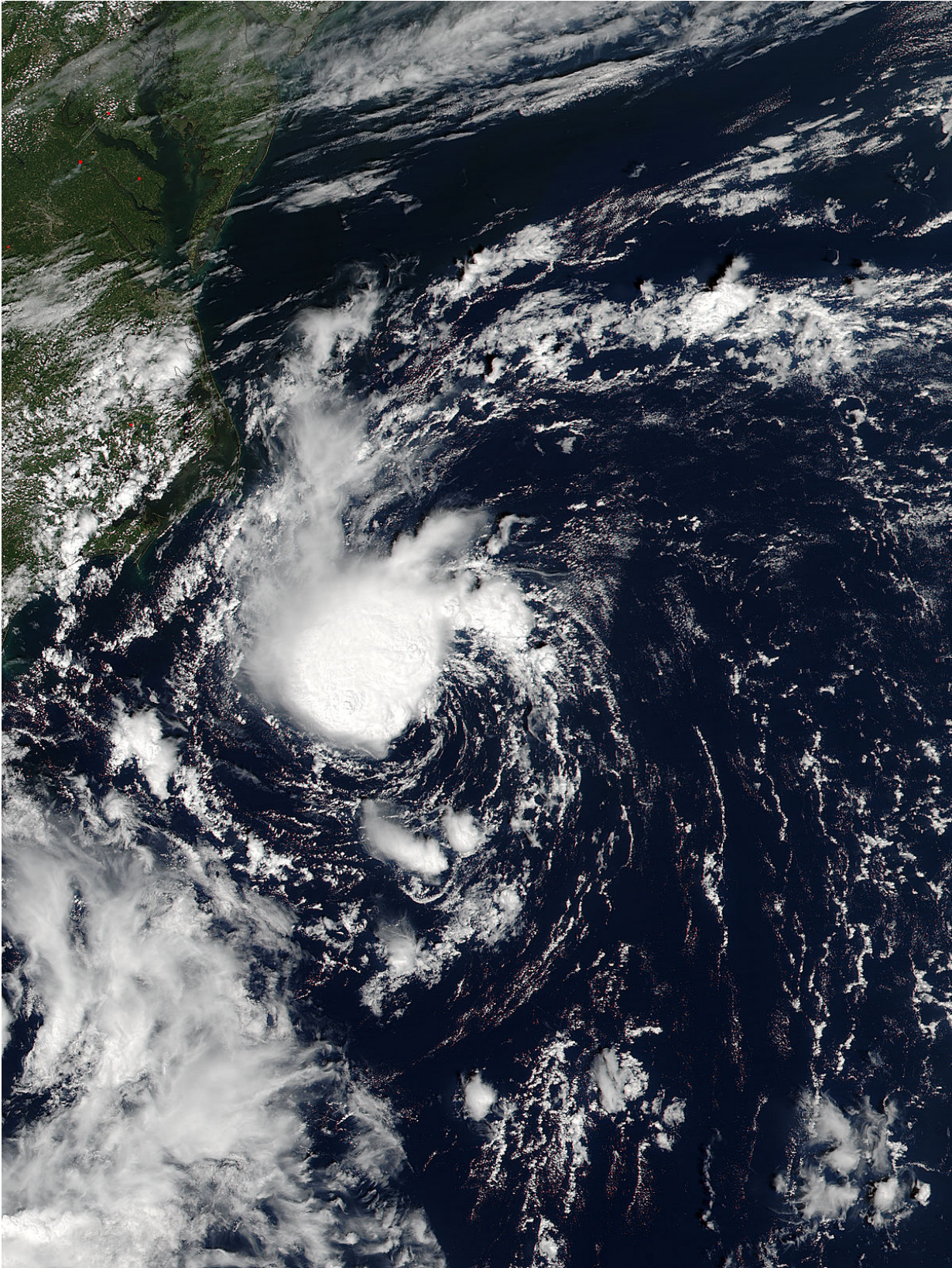


Satellites see Tropical Depression 8 off the North Carolina coast

August 30 2016



At 2:25 p.m. EDT (18:25 UTC) on Aug. 29, NASA-NOAA's Suomi NPP satellite captured an image of Tropical Depression Eight off the North Carolina coast. Credit: NASA Goddard Rapid Response Team

ASA-NOAA's Suomi NPP and NOAA's GOES satellites showed Tropical Depression 8 nearing the North Carolina coast. An animation of satellite imagery showed the development and movement of the depression toward the coast over a two day period.

At 2:25 p.m. EDT (18:25 UTC) on Aug. 29, the Visible Infrared Imaging Radiometer Suite (VIIRS) instrument aboard NASA-NOAA's Suomi NPP satellite captured a visible image of Tropical Depression Eight off the North Carolina coast. The depression had a tight concentration of strong thunderstorms around its low-level center of circulation.

At NASA/NOAA's GOES Project office at the NASA Goddard Space Flight Center in Greenbelt, Maryland, an animation of NOAA's GOES-East satellite imagery from Aug. 28 to Aug. 30 was created. The animation showed the movement of Tropical Depression 8 near the Carolinas, and Tropical Depression 9 over Cuba.

On Aug. 30 a Tropical Storm Warning is in effect for the coast of North Carolina from Cape Lookout to Oregon Inlet Pamlico Sound

At 8 a.m. EDT (1200 UTC) on Tuesday, Aug. 30 the center of Tropical Depression Eight was located near 34.1 degrees north latitude and 75.1 degrees west longitude. That puts the center of the depression just 85 miles (135 km) south-southeast of Cape Hatteras, North Carolina.

NOAA's National Hurricane Center said that the depression is moving

toward the north-northwest near 5 mph (8 kph). A turn toward the north is expected later today, and a turn toward the northeast is forecast on Wednesday. On the forecast track, the center of the depression will be near the Outer Banks of North Carolina today, Aug. 30, either this afternoon or this evening.

Maximum sustained winds are near 35 mph (55 kph) with higher gusts. Slow strengthening is forecast during the next 48 hours, and the depression could become a tropical storm later today.

NHC noted that the depression is expected to produce total rain accumulations of 1 to 3 inches with isolated maximum amounts of 5 inches over far eastern North Carolina, including the Outer Banks.

Provided by NASA's Goddard Space Flight Center

Citation: Satellites see Tropical Depression 8 off the North Carolina coast (2016, August 30) retrieved 25 April 2024 from

<https://phys.org/news/2016-08-satellites-tropical-depression-north-carolina.html>

This document is subject to copyright. Apart from any fair dealing for the purpose of private study or research, no part may be reproduced without the written permission. The content is provided for information purposes only.