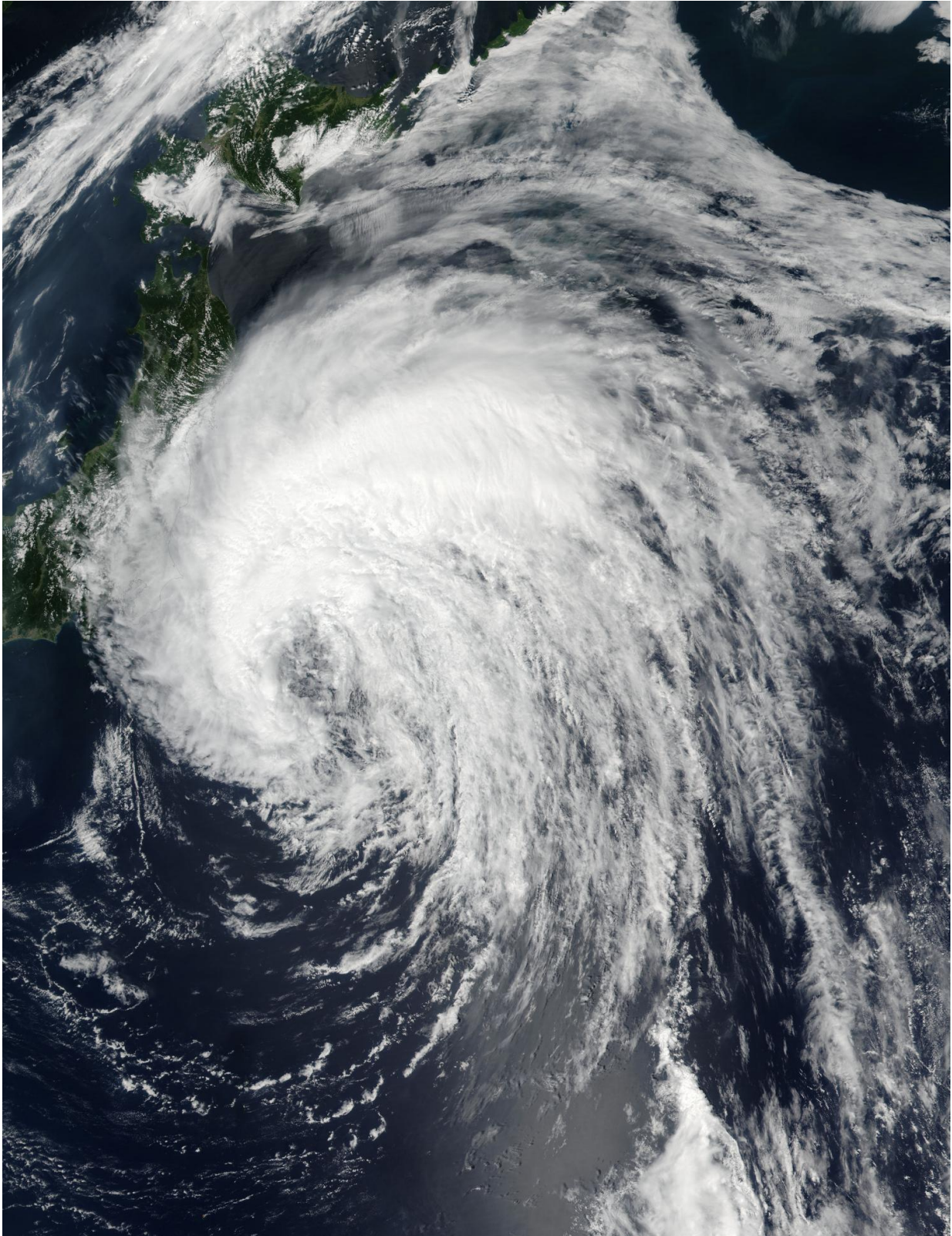


NASA sees Tropical Storm Omais weakening near Japan

August 8 2016



This true-color image from the NASA-NOAA Suomi NPP satellite on Aug. 7,

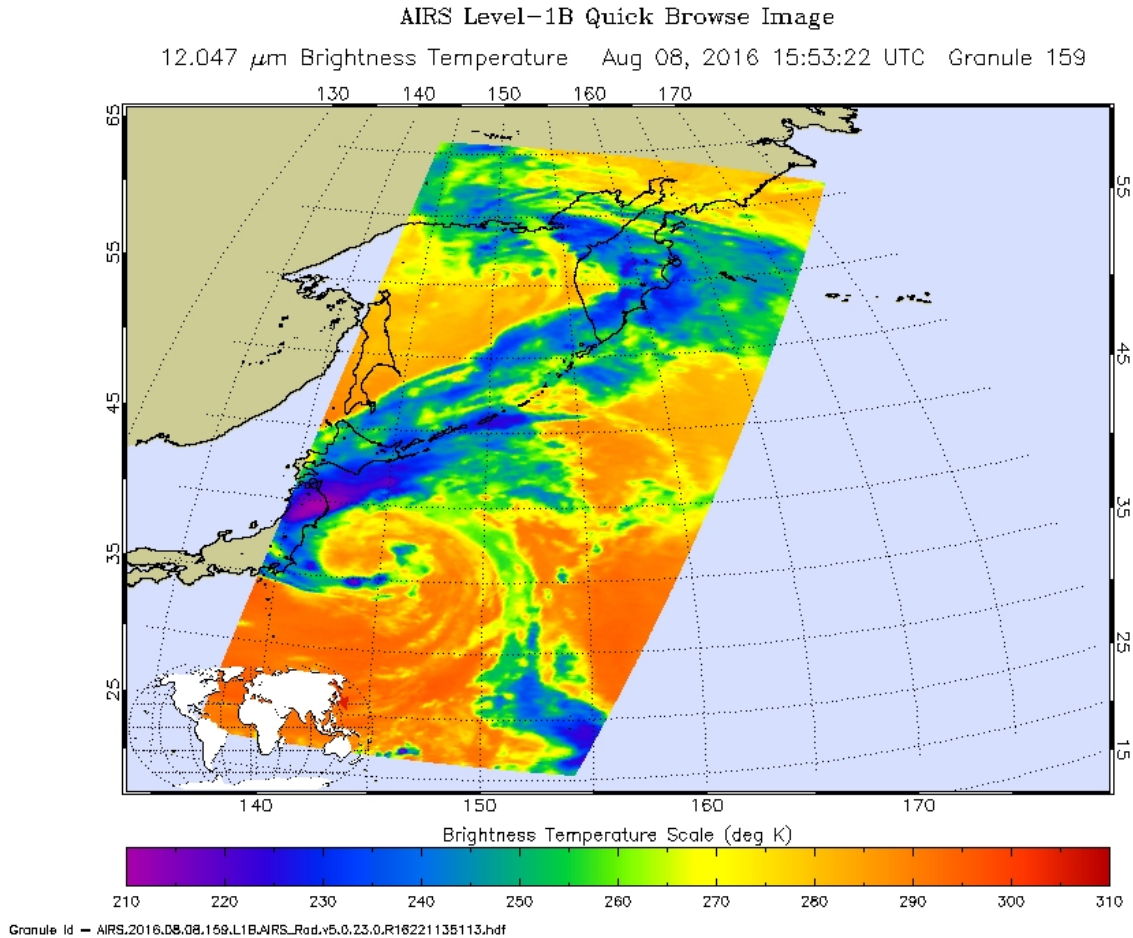
2016, at 11:05 p.m. EDT (Aug. 8 at 3:05 a.m. UTC) shows Tropical Storm Omais east of central Japan. Credit: NOAA/NASA

NASA-NOAA's Suomi NPP satellite spotted Tropical Storm Omais just off-shore, and east of the big island of Japan.

On Aug. 7 at 11:05 p.m. EDT (Aug.8 at 3:05 a.m. UTC) the Visible Infrared Imaging Radiometer Suite (VIIRS) instrument aboard NASA-NOAA's Suomi NPP satellite captured a visible light image of Omais in the northwestern Pacific Ocean. The VIIRS image showed that the bulk of Omais' thunderstorms were north and west of the center of circulation. Omais' center was visible in the image, and the southeastern quadrant seems to be devoid of thunderstorm development.

A false-colored infrared image from the AIRS instrument aboard NASA's Aqua satellite showed Tropical Storm Omais' coldest cloud tops and strongest thunderstorms over northern Japan on Aug. 8. The image also showed that the [storm](#) is elongating, which is a sign of weakening. The image was created at NASA's Jet Propulsion Laboratory in Pasadena, California.

On Aug. 8 at 11 a.m. EDT (3 p.m. UTC) Omais' [maximum sustained winds](#) were near 46 mph (40 knots/74 kph). It was centered near 36.2 degrees north latitude and 144.7 degrees east longitude, about 230 nautical miles east of Yokosuka, Japan. Omais was moving to the north at 11.5 mph (10 knots/18.5 kph).



This false-color infrared image from NASA's Aqua satellite of the clouds from Tropical Storm Omais show the coldest cloud tops and strongest thunderstorms over northern Japan on Aug. 8, 2016. The image also shows that the storm is elongating. Credit: NASA JPL, Ed Olsen

The Japan Meteorological Agency has posted warnings and watches for northern Japan. To see the warning areas, visit: <http://www.jma.go.jp/jma/indexe.html>.

The Joint Typhoon Warning Center expects Omais to curve to the northeast while remaining to the east of the Kuril Islands and transition

into an extra-tropical storm over the next couple of days.

Provided by NASA's Goddard Space Flight Center

Citation: NASA sees Tropical Storm Omais weakening near Japan (2016, August 8) retrieved 25 April 2024 from <https://phys.org/news/2016-08-nasa-tropical-storm-omais-weakening.html>

This document is subject to copyright. Apart from any fair dealing for the purpose of private study or research, no part may be reproduced without the written permission. The content is provided for information purposes only.