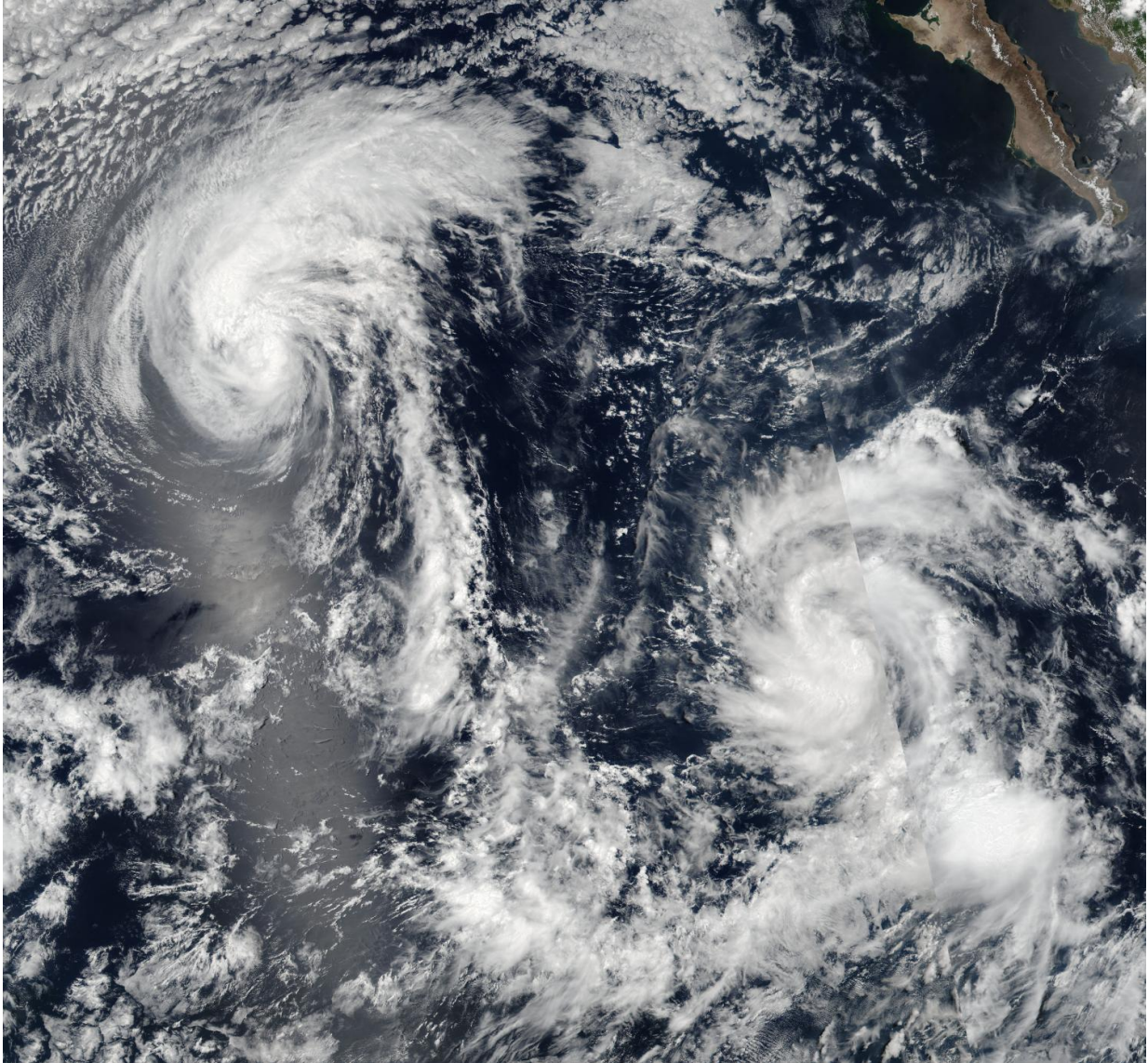


NASA sees tropical storm Howard weakening

August 3 2016



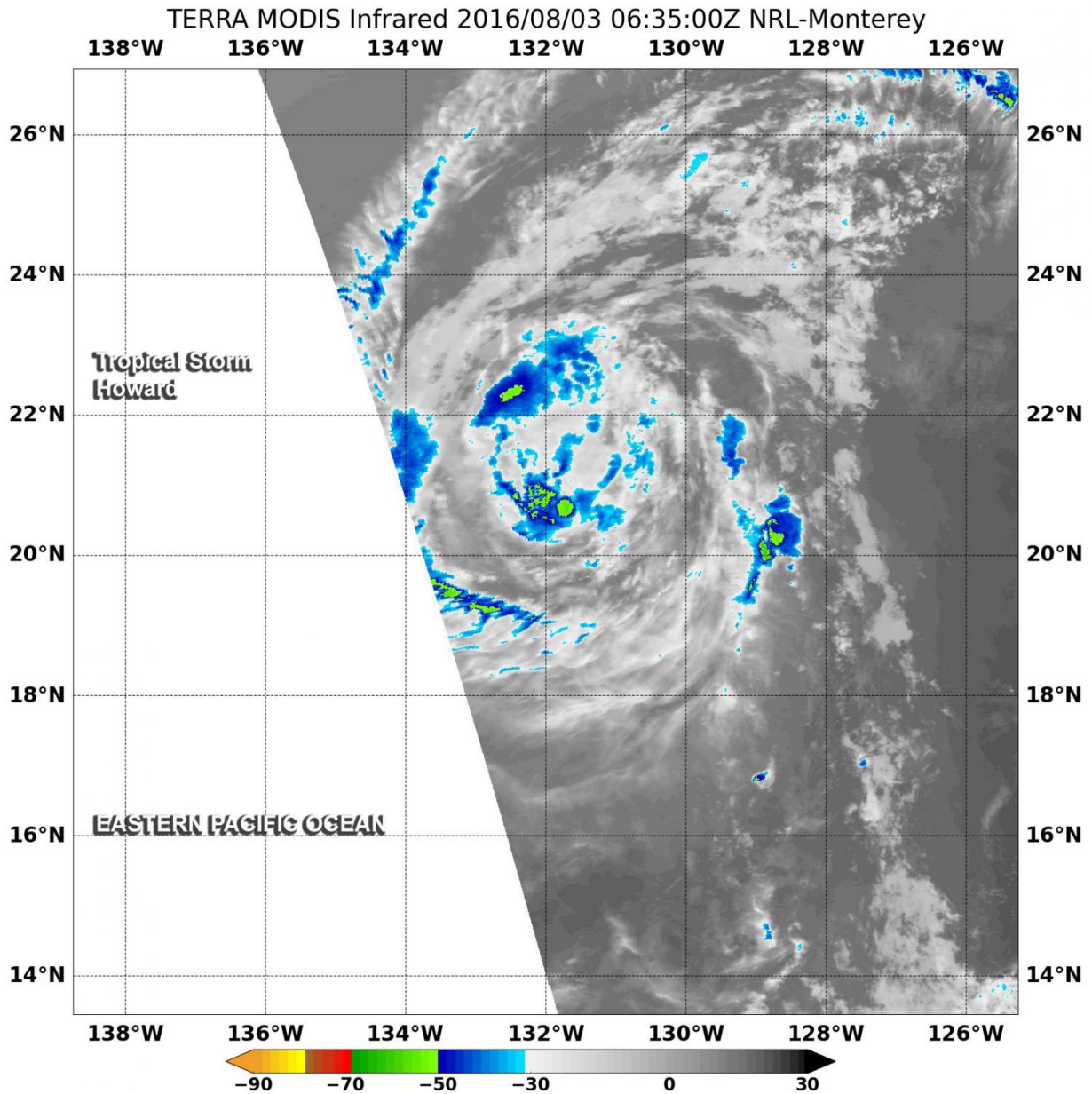
On Aug. 2, 2016, at 5:50 p.m. EDT, NASA-NOAA's Suomi NPP satellite captured images of Tropical Storm Howard (left) and Tropical Depression Ivette (right) in the eastern Pacific Ocean. Credit: NASA/NOAA

Infrared data from NASA's Terra satellite has revealed that Tropical Storm Howard is weakening quickly as it continues to move over cooler waters in the Eastern Pacific Ocean.

On Aug. 3 at 2:35 a.m. EDT (6:35 a.m. UTC) the Moderate Resolution Imaging Spectroradiometer, or MODIS, instrument that flies aboard NASA's Terra satellite provided [infrared data](#) on Howard. The image showed that strong thunderstorms and deep convection (rising air that forms them) continued to decrease and were limited to northwest and south of the center. The National Hurricane Center (NHC) reported that the strongest storms had become separated from the low-level center of the storm overnight.

At 5 a.m. EDT (9 a.m. UTC) on Aug. 3, the center of Tropical Storm Howard was located near 20.3 degrees north latitude and 132.6 degrees west longitude. That's about 1,465 miles (2,360 km) west of the southern tip of Baja California, Mexico. Howard was moving toward the west-northwest near 15 mph (24 kph), and this motion should continue through today. A turn toward the west is expected by Thursday. Maximum sustained winds have decreased to near 45 mph (75 kph) and is forecast to continue weakening. The estimated minimum central pressure is 1,005 millibars.

In the Tropical Storm Howard Discussion online at 5 a.m. EDT, National Hurricane Center forecaster Daniel Brown said, "The [tropical storm](#) should continue to weaken during the next day or so while it moves over cool water and into a drier and more stable environment. Howard is forecast to become a remnant low in 24 to 36 hours, but this could occur sooner if organized deep convection does not redevelop later today."



On Aug. 3, 2016, at 2:35 a.m. EDT, the MODIS instrument that flies aboard NASA's Terra satellite showed that strong thunderstorms continued to decrease and were limited to northwest and south of Howard's center. Credit: NASA/NRL

Provided by NASA's Goddard Space Flight Center

Citation: NASA sees tropical storm Howard weakening (2016, August 3) retrieved 16 June 2024 from <https://phys.org/news/2016-08-nasa-tropical-storm-howard-weakening.html>

This document is subject to copyright. Apart from any fair dealing for the purpose of private study or research, no part may be reproduced without the written permission. The content is provided for information purposes only.