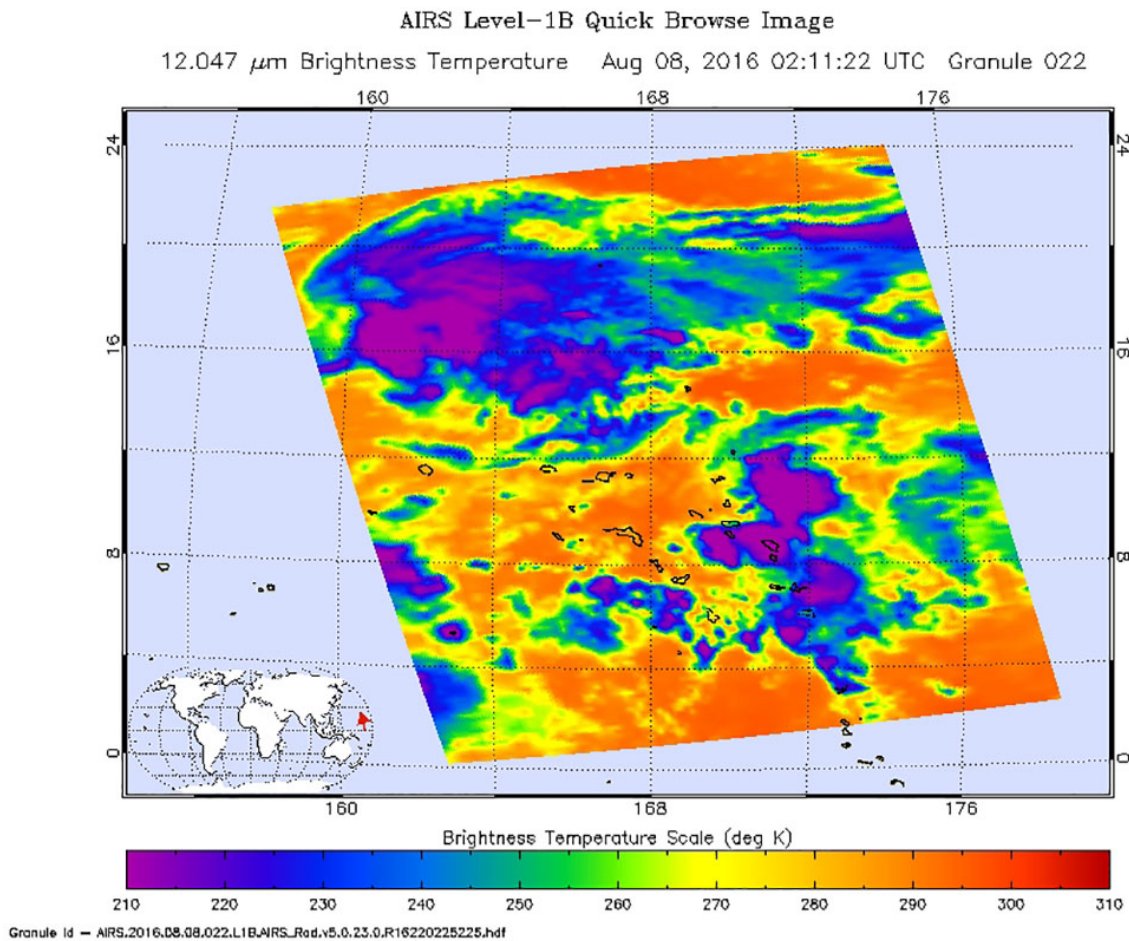


# NASA gets an infrared look at newly formed Tropical Depression 08W

August 8 2016



The AIRS instrument aboard NASA's Aqua satellite looked at cloud top temperatures within Tropical Depression 08W on Aug. 7, 2016, at 10:11 p.m. EDT (Aug. 8 at 2:11 p.m. UTC). The purple color indicates the coldest cloud tops and strongest storms. Credit: NASA JPL, Ed Olsen

NASA's Aqua satellite recently caught a look at the newly formed tropical depression in the Northwestern Pacific Ocean.

The Atmospheric Infrared Sounder or AIRS instrument aboard NASA's Aqua satellite used [infrared data](#) to look at cloud top temperatures within Tropical Depression 08W on Aug. 7 at 10:11 p.m. EDT (Aug. 8 at 2:11 a.m. UTC). Forecasters at the Joint Typhoon Warning Center (JTWC) noted that animated enhanced infrared imagery "showed continued improvement in the convective structure (where thunderstorms are forming) with deep formative banding [of thunderstorms] wrapping into the low level circulation center."

At 11 a.m. EDT (3 p.m. UTC) on Aug. 8, 2016, Tropical Depression 08W's maximum sustained winds were near 34.5 mph (30 knots/55.5 kph). It was centered about 364 nautical miles west-southwest of Wake Island, near 17.9 degrees north latitude and 160.1 degrees east longitude. The depression was moving to the west-northwest at 4.6 mph (4 knots/7.4 kph).

The JTWC forecast calls for this storm to continue to intensify as it turns to the northwest through open waters of the Northwestern Pacific Ocean. The storm is expected to reach typhoon strength by Aug. 11.

Provided by NASA's Goddard Space Flight Center

Citation: NASA gets an infrared look at newly formed Tropical Depression 08W (2016, August 8) retrieved 26 April 2024 from

<https://phys.org/news/2016-08-nasa-infrared-newly-tropical-depression.html>

This document is subject to copyright. Apart from any fair dealing for the purpose of private study or research, no part may be reproduced without the written permission. The content is provided for information purposes only.