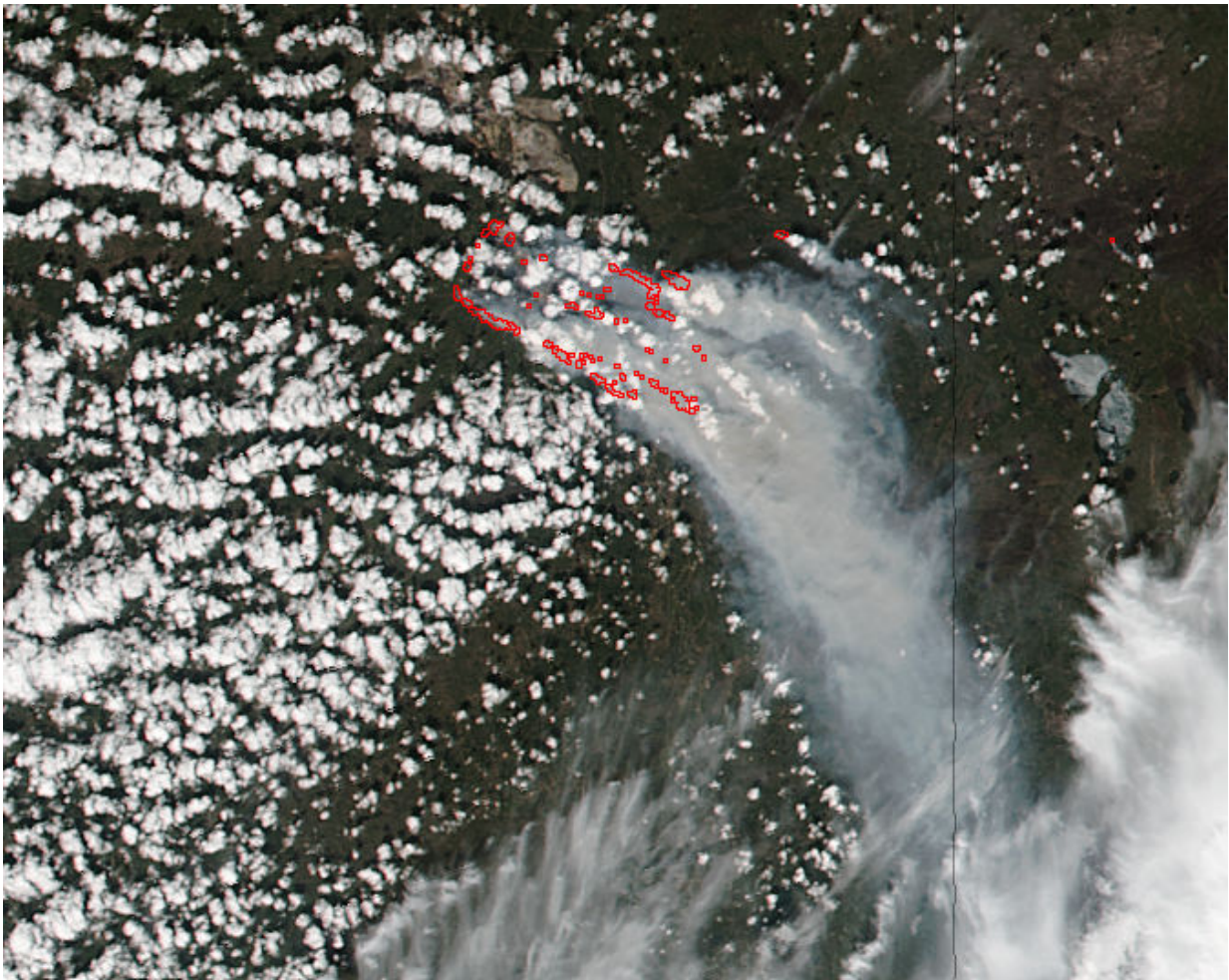


Suomi NPP satellite continues to monitor Alberta's huge wildfire

May 6 2016



This daytime view of the Fort McMurray wildfire in Alberta, Canada, was captured by the VIIRS instrument aboard NASA-NOAA-DOD's Suomi NPP satellite on May 5, 2016 at 3:45 p.m. EDT (19:45 UTC). Hotspots indicating fires are outlined in red. Smoke appears light brown and was blowing to the southeast. Credit: NASA MODIS Rapid Response, Jeff Schmaltz

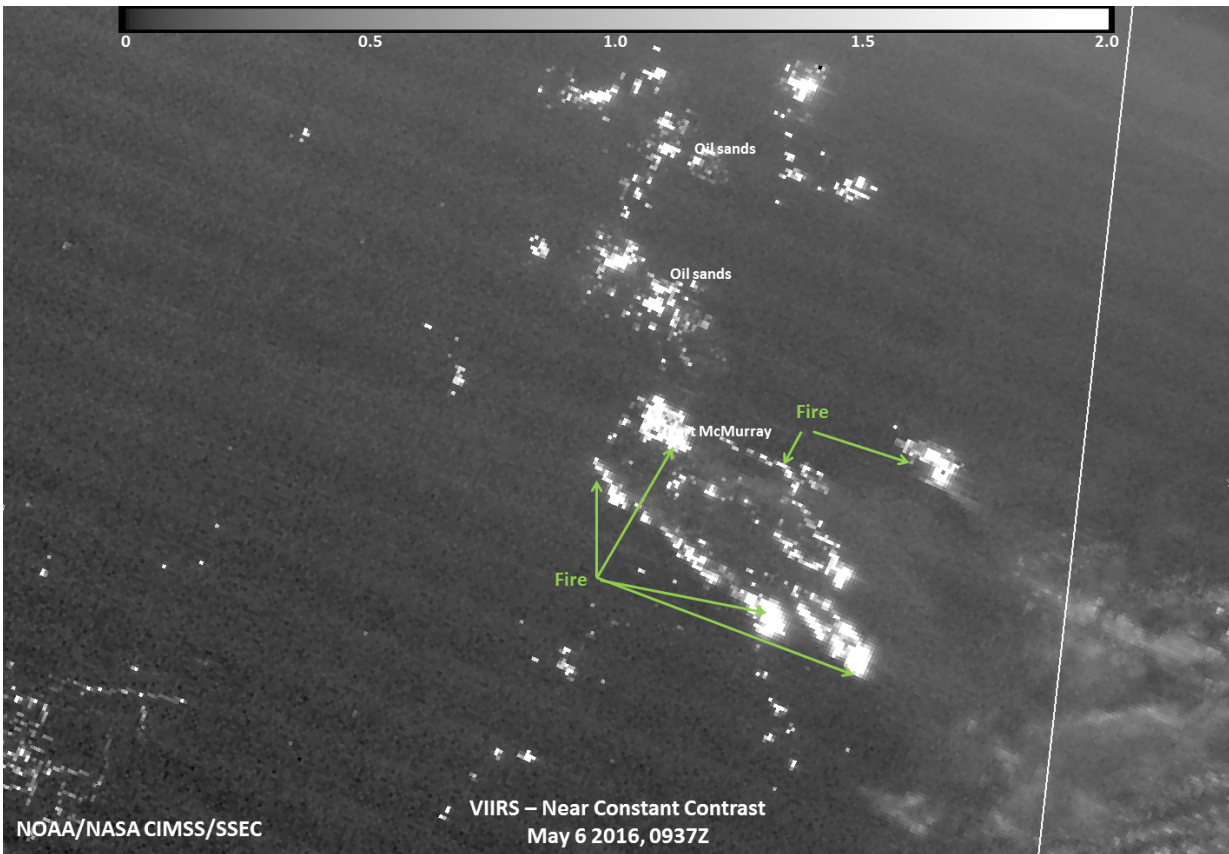
The Fort McMurray wildfire in Alberta, Canada, continues to burn and the smoke and heat from the intense fires are detectable by satellite. The Suomi National Polar-orbiting Partnership satellite carries an instrument so sensitive to low light levels that it can detect wildfires in the middle of the night as well as during the daytime and captured day and night images.

On May 6, 2016 all of Fort McMurray is under a mandatory evacuation order. The Fort McMurray International Airport remains open at this time.

Suomi NPP's Visible Infrared Imaging Radiometer Suite (VIIRS) instrument captured a look at the fire and the smoke generated by the fire during the daytime on May 5, 2016 at 3:45 p.m. EDT (19:45 UTC). In the image, the hotspots indicate the location of the fires. The smoke was blowing to the south-southeast of the fires in Fort McMurray. Suomi NPP is a joint mission of NASA, NOAA and the Department of Defense.

On May 6, 2016 at 5:56 a.m. EDT (0956 UTC), the VIIRS instrument on Suomi NPP acquired a nighttime image of the Fort McMurray wildfire by using its "day-night band" to sense the fire in the visible portion of the spectrum. In the image, the brightest parts of the fire appear white while smoke appears light gray.

According to the Alberta Department of Agriculture and Forestry (ADAF) on May 6, 2016 the following communities are under an evacuation order: Fort McMurray, Anzac, Gregoire Lake Estate and Fort McMurray First Nation. The high level evacuation order has been lifted (at noon MDT on May 5). For more details, visit the ADAF page: <http://wildfire.alberta.ca/>.



This nighttime infrared view of the Fort McMurray wildfire in Alberta Canada was captured by the VIIRS instrument aboard NASA-NOAA's Suomi NPP satellite on May 6, 2016 at 5:37 a.m. EDT (0937 UTC). The brightest parts of the fire appear white while smoke appears light gray. Credit: UWM/SSEC/CIMSS, William Straka III

Alberta's Regional Municipality of Wood Buffalo (RMWB) reported on May 5, 2016 at 9:20 p.m. MDT, that the Anzac/Gregoire Lake Estates and the Stone Creek Area remains an active fire zone. The Birchwood Trails remains a priority from a strategic firefighting standpoint and crews are working hard to protect this area. RMWB noted that gusting winds have been extremely challenging for fire crews and properties

near green areas remain an issue due to sparks and high winds creating spot fires among housing. A plan is being developed for northern evacuees. For updates from RMWB, visit: <http://asset.rmwb.ca/wildfire/>

The Government of Alberta Transportation noted on May 6, 2016 that due to heavy smoke and [fire](#), motorists are being asked not to travel to Fort McMurray on either Highway 63 or Highway 881. Highway 881 is closed to through traffic at Anzac, until further notice. For information about state of emergency, evacuation and reception centers, fuel locations, financial assistance, pets, boil water advisories, and social support services, visit: <http://www.alberta.ca/emergency.cfm>.

On May 6, 2016 Alberta Emergency Alert posted that in Mackenzie County, the evacuation order will be lifted as of 12:00 p.m. MDT for residents living in Township 109 range 19 west of 5 between Townships road 1090 and 1094 east to the Bushe River, also 17,18,19,28,29,30,31,32 Township 108 Range 18 west 5. Residents are to remain on immediate alert in case the situation changes due to weather changes. For emergency information: <http://www.emergencyalert.alberta.ca/>.

Provided by NASA's Goddard Space Flight Center

Citation: Suomi NPP satellite continues to monitor Alberta's huge wildfire (2016, May 6) retrieved 27 April 2024 from <https://phys.org/news/2016-05-suomi-npp-satellite-alberta-huge.html>

This document is subject to copyright. Apart from any fair dealing for the purpose of private study or research, no part may be reproduced without the written permission. The content is provided for information purposes only.