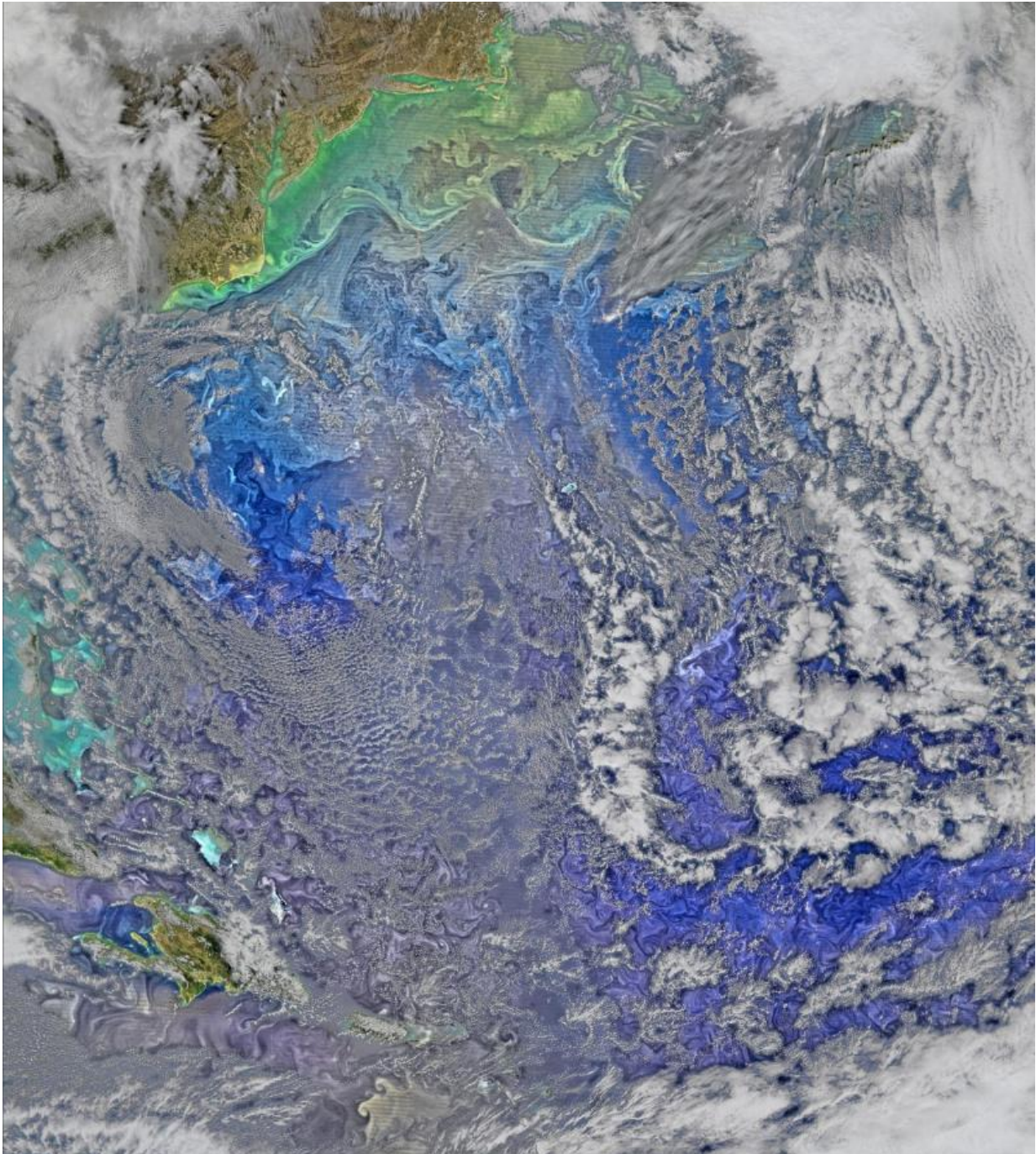


Image: The turbulent North Atlantic

April 6 2016



Credit: NASA/Ocean Biology Processing Group, NASA Goddard Space Flight Center

The Gulf Stream waters flow in somewhat parallel layers, slicing across what is otherwise a fairly turbulent western North Atlantic Ocean in this March 9, 2016 image collected by the Visible Infrared Imaging Radiometer Suite on NASA-NOAA's Suomi NPP satellite.

The turbulence—made visible by the pigmented phytoplankton it entrains—extends across the whole North American Basin from Anegada to Bermuda to Cape Cod.

Provided by NASA

Citation: Image: The turbulent North Atlantic (2016, April 6) retrieved 26 April 2024 from <https://phys.org/news/2016-04-image-turbulent-north-atlantic.html>

This document is subject to copyright. Apart from any fair dealing for the purpose of private study or research, no part may be reproduced without the written permission. The content is provided for information purposes only.