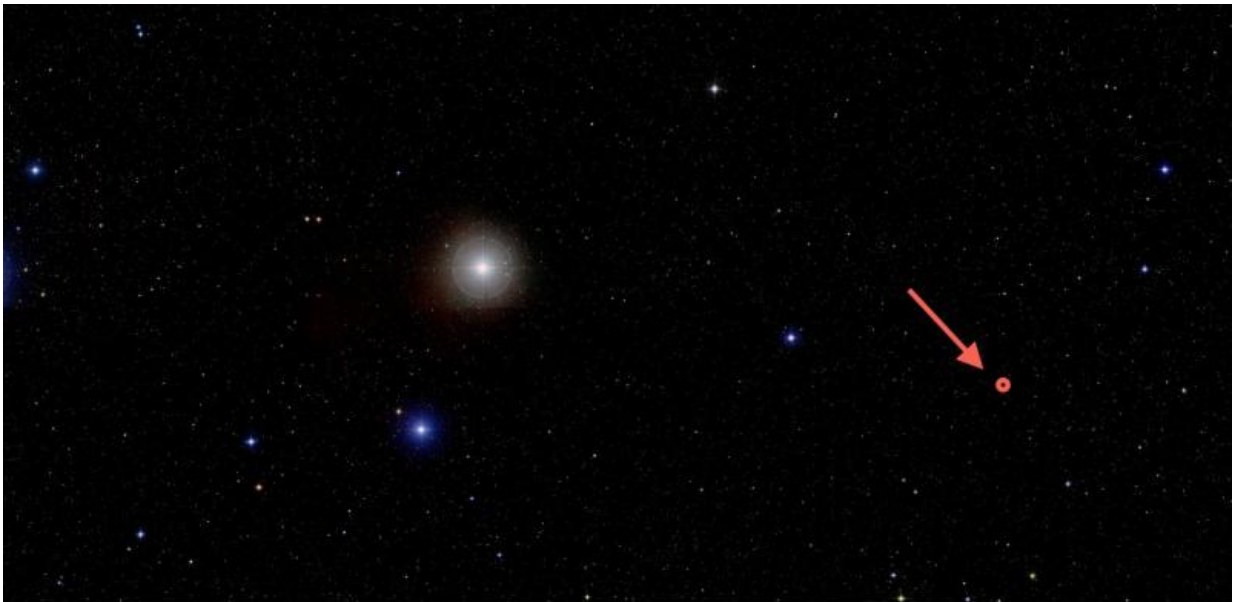


# Newly discovered planet in the Hyades cluster could shed light on planetary evolution

February 25 2016

---



The red dwarf star K2-25 is indicated in this view of part of the Hyades open star cluster from the Digitized Sky Survey. The Hyades is the closest open star cluster to Earth. It is visible in the night sky in the horns of the constellation Taurus, the bull. Credit: A. Mann/McDonald Obs./DSS

University of Texas at Austin astronomer Andrew Mann and colleagues have discovered a planet in a nearby star cluster which could help astronomers better understand how planets form and evolve. The discovery of planet K2-25b used both the Kepler space telescope and the university's McDonald Observatory, and is published in a recent issue of

the *Astrophysical Journal*.

The planet orbits a [red dwarf](#) star, a star smaller and dimmer than the Sun. Red dwarfs are the most abundant stars in our galaxy. The star is located in the Hyades star cluster, the closest open [star cluster](#) to Earth. Its stars are young, so their planets must be young, too.

"Open clusters are powerful tools as all the stars formed with the same age and composition," Mann said. Once many planets are found orbiting young cluster stars, "we can compare those to planets orbiting older stars elsewhere to see if they are different in some fundamental way—to see how planets change with time."

For instance, he said, if planets orbiting [young stars](#) are farther from their host stars than their older counterparts, it suggests that planets migrate over their lifetimes. They may form farther out and migrate inward. Many exoplanetary systems have large planets orbiting close to their stars, unlike our own solar system. This kind of research could test the theory of planetary migration.

After finding many more examples of planets orbiting young stars, "we can put numbers on this," Mann said. "This could even give us a glimpse into what our solar system looked like" in the past.



(unannotated) A view of part of the Hyades open star cluster from the Digitized Sky Survey. The Hyades is the closest open star cluster to Earth. It is visible in the night sky in the horns of the constellation Taurus, the bull. Credit: A. Mann/McDonald Obs./DSS

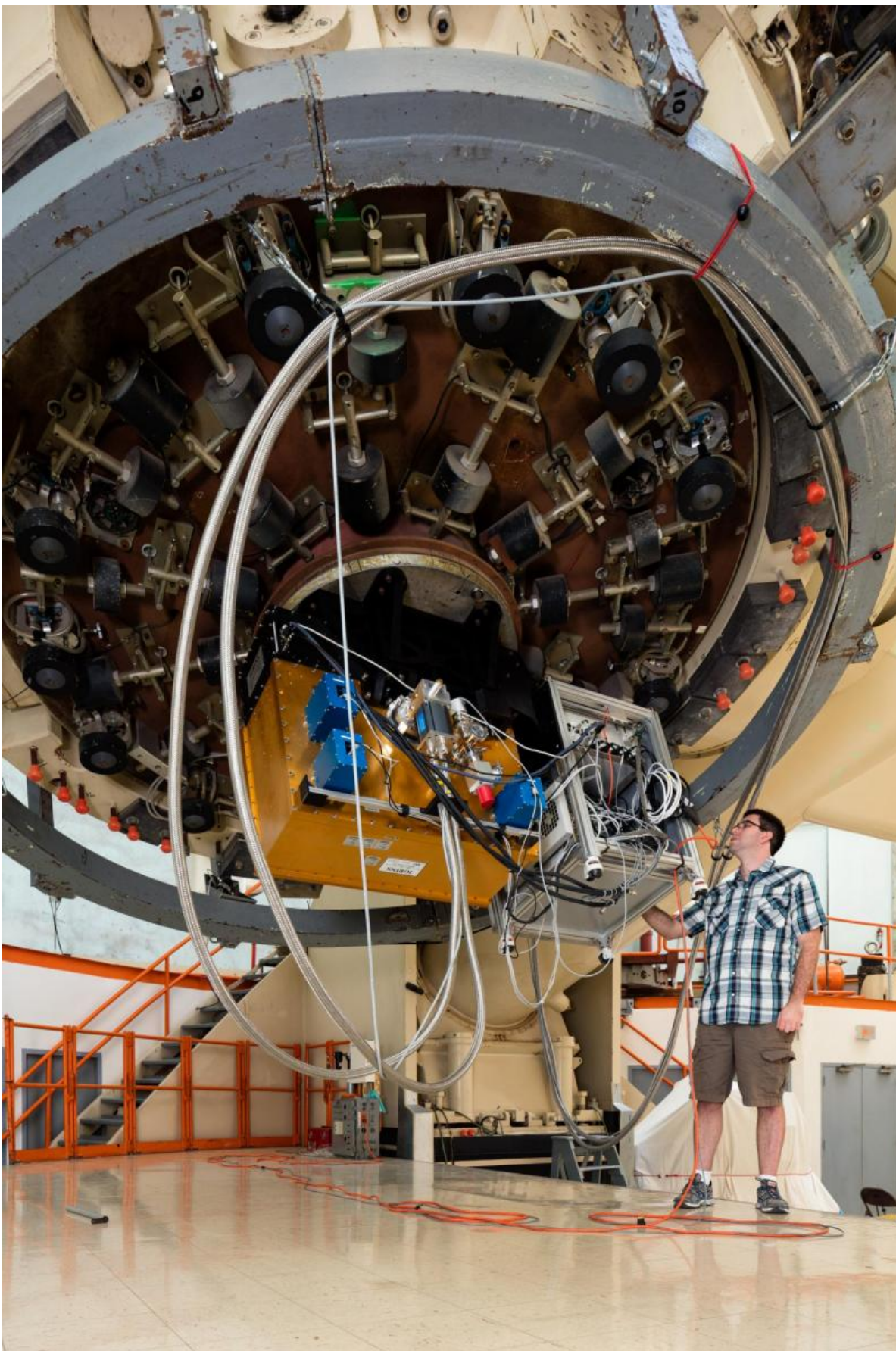
The planet in the Hyades is four times the size of Earth, or about the size of Neptune. Compared to almost all other planets found orbiting [red dwarf stars](#), it's extremely large. "Almost all of those are less than twice the size of Earth," Mann said.

The planet's large size for its parent star suggests that the planet might have a puffy hydrogen and helium atmosphere. Radiation from the star could slowly strip away this atmosphere over time, he said.

"This could have major implications for our understanding of how planets evolve, including Earth-like [planets](#), as we need to know how well a planet can hold an atmosphere given a certain set of conditions to tell how long it remains habitable."







Graduate student Kyle Kaplan works on the IGRINS instrument mounted on the 2.7-meter Harlan J. Smith Telescope. Credit: Ethan Tweedie Photography

Amateur astronomers Thomas Jacobs and Daryll LaCourse found this planet candidate in the freely available K2 data from the Kepler space telescope's extended mission. They contacted Mann, who followed up the tip by observing this red dwarf star with the new IGRINS instrument on the 2.7-meter Harlan J. Smith Telescope at McDonald Observatory.

"Young [stars](#) are hard to follow up without something like IGRINS," Mann said. Because it's a red dwarf, the star is cool and needed to be studied in infrared light with high spectral resolution. The instrument's high resolution allows astronomers to rule out the chance that the star has a stellar companion, rather than an orbiting planet. It also helps to confirm that the star is a member of the Hyades cluster, by measuring the star's velocity and making sure it matches that of the cluster.

Provided by University of Texas at Austin

Citation: Newly discovered planet in the Hyades cluster could shed light on planetary evolution (2016, February 25) retrieved 9 April 2024 from <https://phys.org/news/2016-02-newly-planet-hyades-cluster-planetary.html>

<p>This document is subject to copyright. Apart from any fair dealing for the purpose of private study or research, no part may be reproduced without the written permission. The content is provided for information purposes only.</p>
--