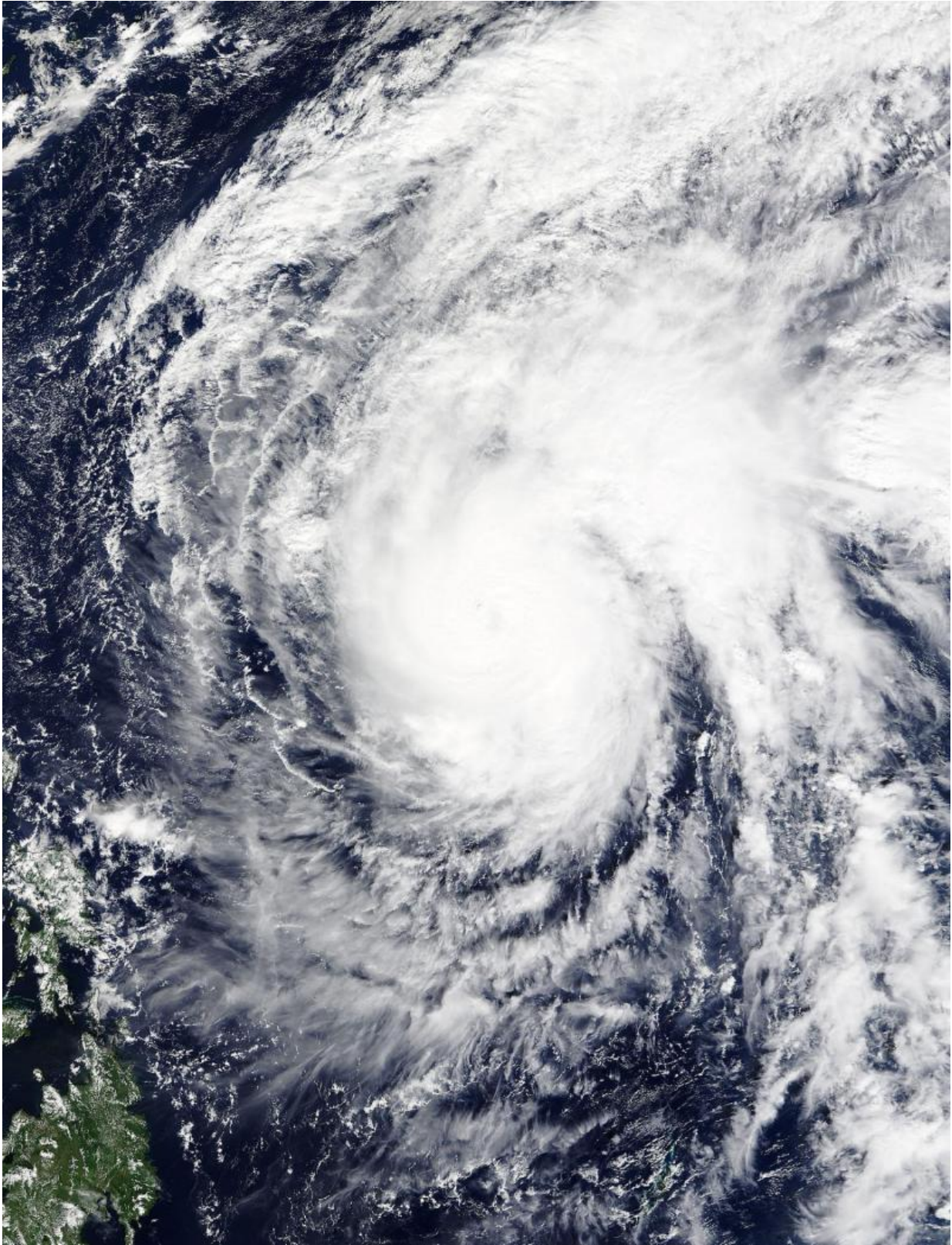


Terra satellite sees Typhoon In-fa stretching

November 23 2015, by Rob Gutro



On Nov. 23 at 02:00 UTC the MODIS instrument aboard NASA's Terra satellite

captured this image of Typhoon In-fa in the Pacific Ocean. Credit: NASA
Goddard MODIS Rapid Response Team

NASA's Terra satellite flew over Typhoon In-fa on Nov. 23 and imagery showed the storm had become elongated to the northeast.

On Nov. 23 at 02:00 UTC (Nov. 22 at 9 p.m. EST) the Moderate Resolution Imaging Spectroradiometer or MODIS instrument aboard NASA's Terra satellite captured an image of Typhoon In-fa in the Pacific Ocean. In-fa's cloud-filled eye was surrounded by powerful thunderstorms. A large band of thunderstorms were wrapping into the low-level center in the northeastern quadrant, and stretching east.

Forecasters at the Joint Typhoon Warning Center noted that the system continues to be elongated to the northeast along the leading edge of an approaching mid-Latitude trough (elongated area of low pressure).

On Nov. 23 at 1500 UTC (10 a.m. EST), Typhoon In-fa had maximum sustained winds near 90 knots (103.6 mph/ 166.7 kph). Typhoon-force winds only extend nautical 25 miles (28.7 miles/46.3 km) from the center. It was centered near 16.9 north latitude and 131.3 east longitude, about 734 nautical miles (844.7 miles/1,359 km) southwest of Iwo To, Japan. In-fa was moving to the north-northwest at 4 knots (4.6 mph/7.4 kph) and is expected to curve to the northeast.

Environmental conditions are expected to continue to deteriorate as [vertical wind shear](#) rapidly increases due to the strong westerly winds from the approaching trough.

The Joint Typhoon Warning Center expects In-fa to weaken over the next couple of days and become an extra-tropical storm. In-fa is forecast

to approach the island of Iwo To, Japan on Nov. 26 and move in a northeasterly direction.

Provided by NASA's Goddard Space Flight Center

Citation: Terra satellite sees Typhoon In-fa stretching (2015, November 23) retrieved 23 April 2024 from <https://phys.org/news/2015-11-terra-satellite-typhoon-in-fa.html>

This document is subject to copyright. Apart from any fair dealing for the purpose of private study or research, no part may be reproduced without the written permission. The content is provided for information purposes only.