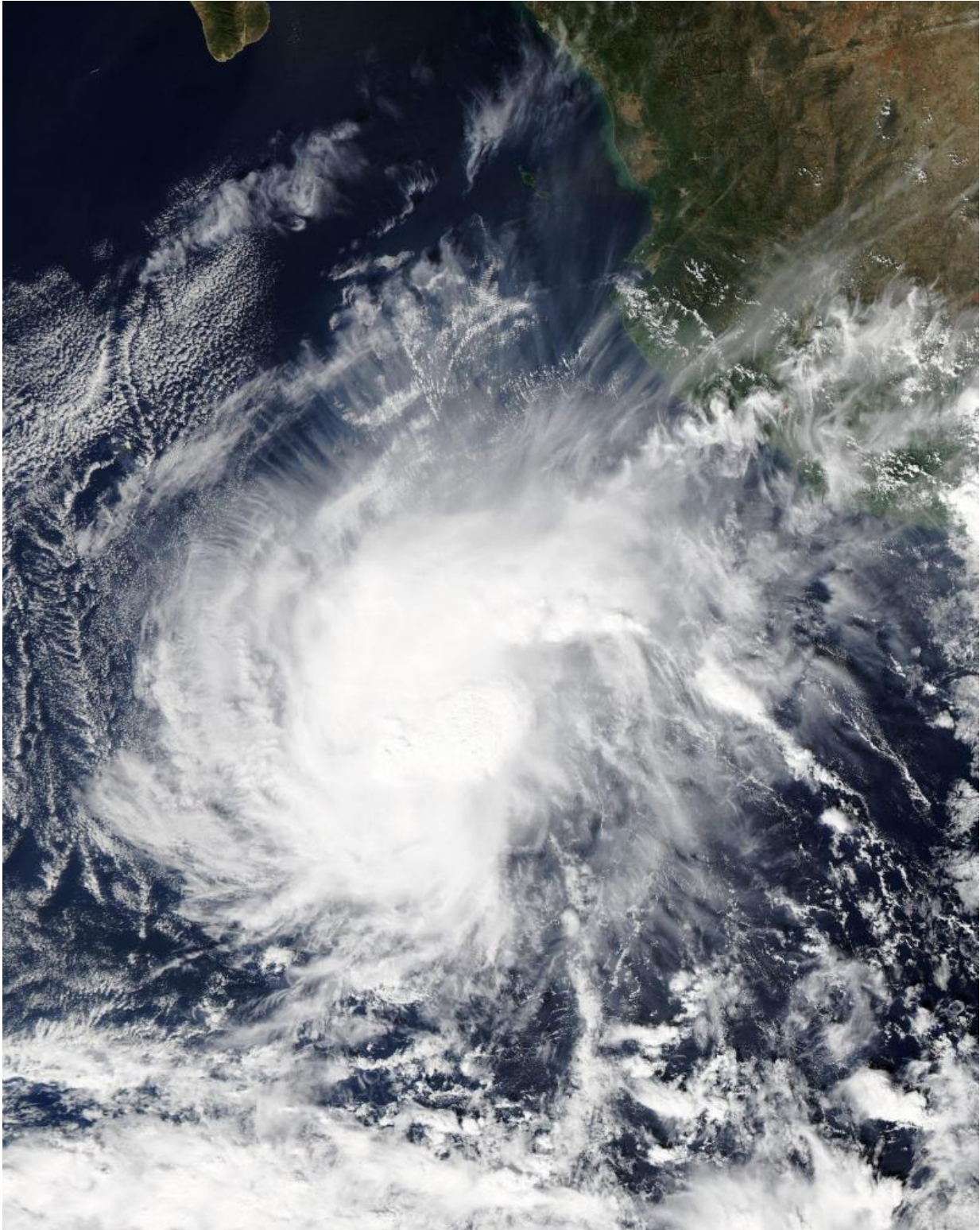


# **Aqua satellite eyes Tropical Storm Rick in Eastern Pacific**

November 20 2015

---



The MODIS instrument aboard NASA's Aqua satellite captured this visible image of Tropical Storm Rick off the west coast of Mexico on Nov. 19 at 20:15

UTC (3:15 p.m. EST). Credit: NASA's MODIS Rapid Response/Jeff Schmaltz

NASA's Aqua satellite passed over Rick and captured a visible light image that showed the storm far off the coast of western Mexico. Rick continued to hang on to its status as tropical storm on Nov. 20, although a minimal one.

The MODIS instrument aboard NASA's Aqua satellite captured a visible image of Tropical Storm Rick on Nov. 19 at 20:15 UTC (3:15 p.m. EST). The image showed thunderstorms circling the low-level center, and a larger band of thunderstorms feeding into the center from the northeast.

Forecaster Berg of the National Hurricane Center said that banding of thunderstorms appears better defined on Friday, Nov. 20. Recent scatterometer data, which measures [surface winds](#), indicate that the maximum winds remain about 35 knots (40 mph), with the [tropical-storm](#)-force winds confined to a small area west of the center.

At 4 a.m. EST (0900 UTC) on Nov. 20, the center of Tropical Storm Rick was located near latitude 15.9 North, longitude 109.4 West. That's about 400 miles (640 km) west-southwest of Manzanillo, Mexico. Rick was moving toward the west-northwest near 13 mph (20 kph), and this general motion with a gradual decrease in forward speed is expected through Saturday night.

Maximum sustained winds remain near 40 mph (65 kph) with higher gusts. The National Hurricane Center said that little change in strength is forecast during the next 48 hours. The estimated minimum central pressure is 1002 millibars.

Rick is expected to remain far from land over the next two days and weaken to a depression by Nov. 22.

For forecast updates, visit the National Hurricane Center website at: <http://www.nhc.noaa.gov>.

Provided by NASA's Goddard Space Flight Center

Citation: Aqua satellite eyes Tropical Storm Rick in Eastern Pacific (2015, November 20)  
retrieved 28 July 2024 from <https://phys.org/news/2015-11-nasa-aqua-satellite-eyes-tropical.html>

This document is subject to copyright. Apart from any fair dealing for the purpose of private study or research, no part may be reproduced without the written permission. The content is provided for information purposes only.