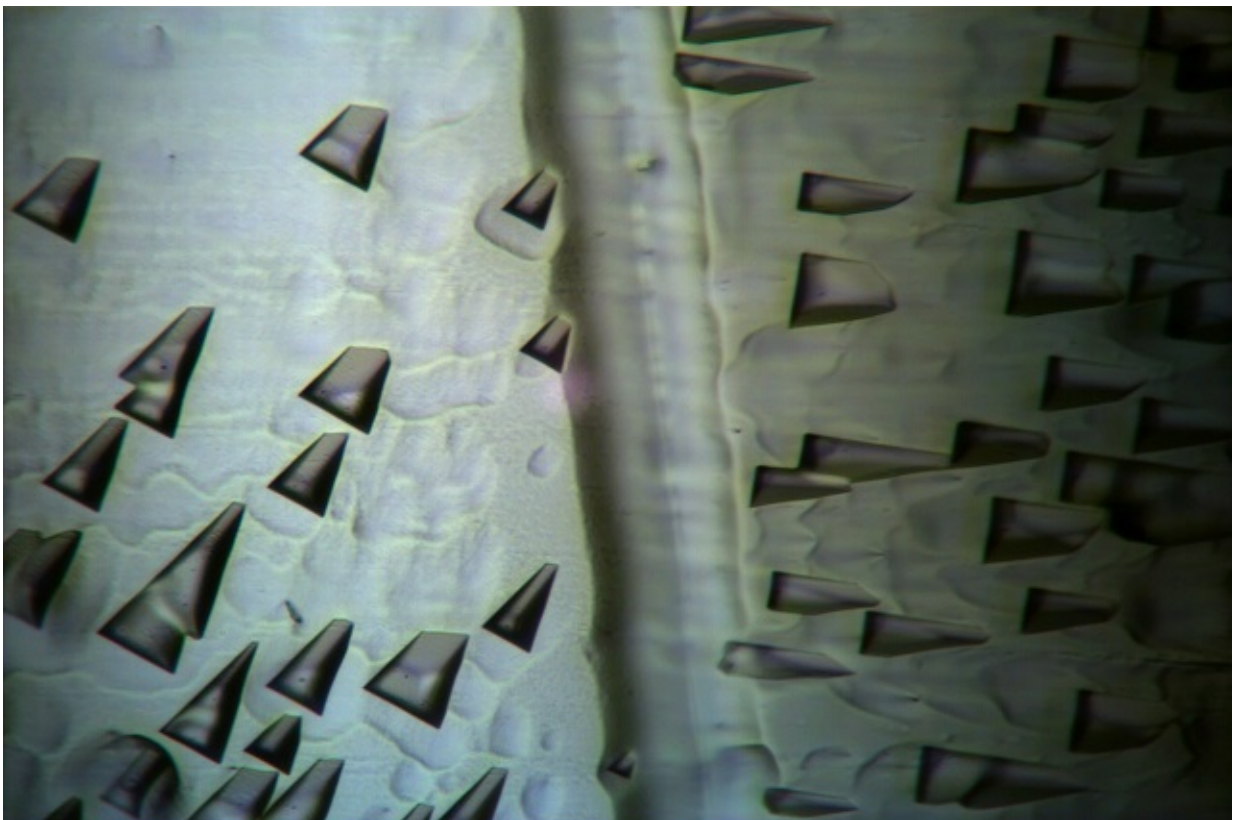


Solving 80-year-old mystery, chemist discovers way to isolate single-crystal ice surfaces

October 30 2015



The ability to select and study crystal ice faces, like this one, could help answer important questions, such as how vapor interacts with ice crystals to produce rain, which pollutants attach themselves to ice crystals, and why no two snowflakes are alike. Credit: Laboratory for Water and Surface Analysis, Tufts University.

A Tufts University chemist has discovered a way to select specific surfaces of single-crystal ice for study, a long-sought breakthrough that could help researchers answer essential questions about climate and the environment. The discovery is detailed in the *Proceedings of the National Academy of Sciences Online Early Edition*, publishing the week of October 26 in advance of print.

"Ice crystals are ubiquitous and could hold the answer to some very important, fundamental questions about our environment, but until now we haven't had the tools to reliably reproduce ice crystal faces in a lab for study," said Mary Jane Shultz, Ph.D., professor of chemistry in the School of Arts and Sciences at Tufts University. "This new process will open the door to areas of research that have been closed to us previously."

The discovery could, for example, enable researchers to better understand how vapor interacts with ice crystals in a cloud to produce rain, which pollutants attach themselves to ice crystals and why no two snowflakes are alike, said Shultz, principal investigator of the Laboratory for Water and Surface Analysis. Those answers could have implications for important issues such as seeding rain clouds and protecting the environment.

Scientists have been pursuing a reliable way to prepare [ice crystal](#) surfaces in the laboratory since at least the 1930s, according to Shultz, and she began trying more than 15 years ago. "I thought I'd grow a piece of ice and be done, but it's a very unusual material and challenging to work with. Previous methods of growing and preparing crystals were not reliable and yielded results that were not reproducible."

These limitations hindered scientists' ability to examine the molecular-level structure and dynamics of ice. That has left gaps in our understanding of the important role that ice plays in the environment,

such as transporting substances through outer space, shaping the earth's surface and processing ozone-damaging molecules in the stratosphere.

In 2013, Shultz's lab took a giant step toward removing these limitations by inventing a special apparatus to grow large samples of single-crystal ice. But selecting a specific face from that ice remained elusive.

Shultz credits her most recent breakthrough to simple geometry and trigonometry. The most common type of ice, called Ih or "[ice](#) one h," is made up of water molecules in a hexagonal crystal shape in an orderly, repeating arrangement called a lattice. Shultz found that by using certain measurements and formulas, she could determine the crystal's lattice orientation as it relates to a surface and use that orientation to make precise cuts of any of the crystal's faces.

The ability to select a desired face is important because it allows researchers to examine molecular-level dynamics and structure and the way in which other molecules bind to the specific faces of the crystal, she said.

Shultz, who is considered a pioneer in the study of aqueous surfaces and interactions of high powered laser light with those surfaces, is a fellow of the American Association for the Advancement of Science and the American Chemical Society.

In addition to Shultz, authors on the paper were Alexandra Brumberg, a Tufts University undergraduate student; Patrick J. Bisson, Ph.D., a post-doctoral researcher in Shultz's lab; and Ryan Shultz, a former researcher in Shultz's lab.

More information: Mary Jane Shultz et al. Producing desired ice faces, *Proceedings of the National Academy of Sciences* (2015). [DOI: 10.1073/pnas.1513173112](https://doi.org/10.1073/pnas.1513173112)

Provided by Tufts University

Citation: Solving 80-year-old mystery, chemist discovers way to isolate single-crystal ice surfaces (2015, October 30) retrieved 19 April 2024 from <https://phys.org/news/2015-10-year-old-mystery-chemist-isolate-single-crystal.html>

This document is subject to copyright. Apart from any fair dealing for the purpose of private study or research, no part may be reproduced without the written permission. The content is provided for information purposes only.