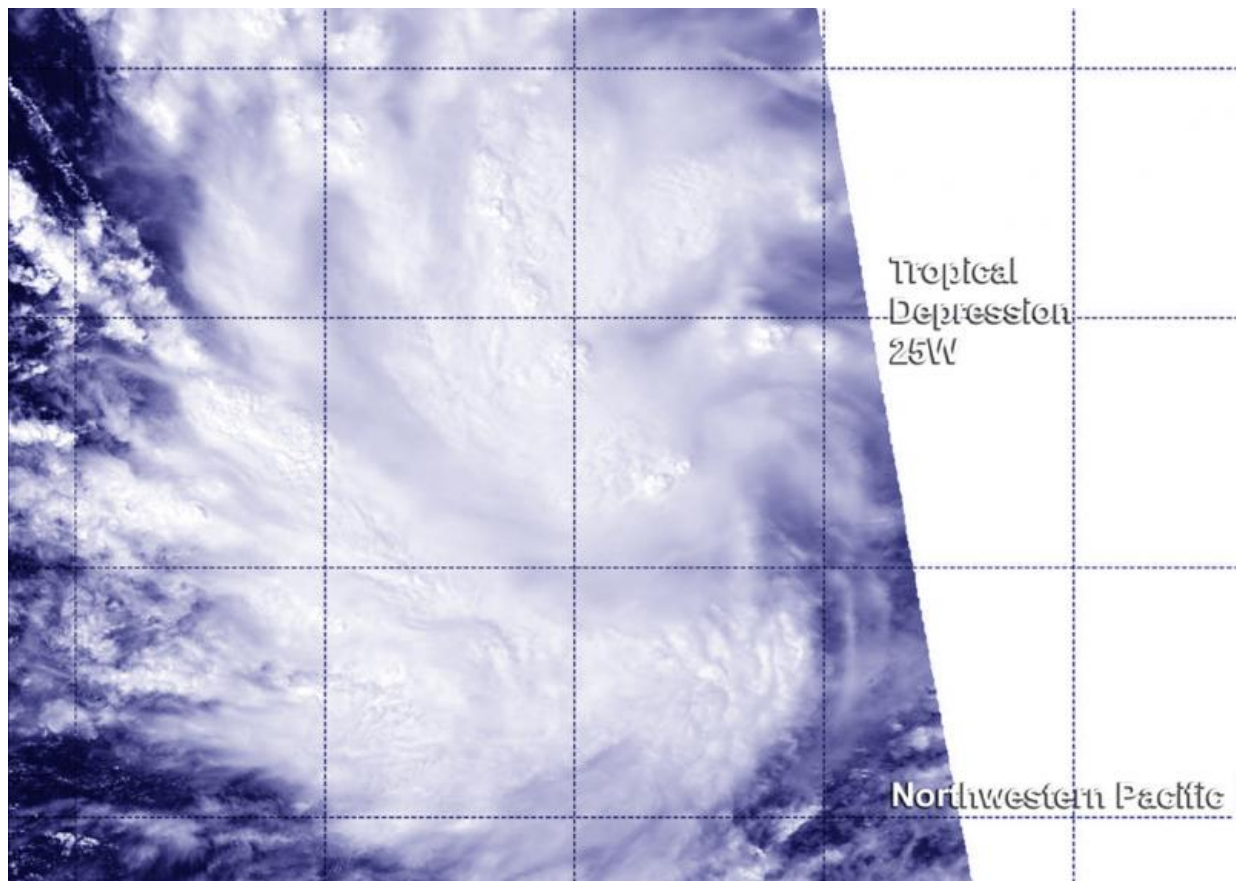


# Suomi NPP spots twenty-fifth tropical depression in Northwestern Pacific

October 13 2015

---



NASA-NOAA's Suomi NPP satellite saw Tropical Depression 25W on October 13 at 0325 (Oct. 12 at 11:25 p.m. EDT). Credit: NASA/NRL/NOAA

2015 has been an active year for tropical cyclones in the northwestern

Pacific Ocean as NASA-NOAA's Suomi NPP satellite spotted the twenty-fifth tropical depression.

Visible data from the Visible Infrared Imaging Radiometer Suite (VIIRS) instrument aboard NASA-NOAA's Suomi NPP satellite saw Tropical Depression 25W on October 13 at 0325 (Oct. 12 at 11:25 p.m. EDT). The VIIRS image showed thunderstorms wrapped around the low-level center of circulation and in a band to the south of the center.

The Joint Typhoon Warning Center analyzed an image of rainfall from NASA/JAXA's Global Precipitation Measurement or GPM core satellite from 1311 UTC (9:11 a.m. EDT) on October 13, 2015 and the microwave image showed a better defined low-level center and curved bands of thunderstorms along the western quadrant of the storm.

On October 13, 2015 at 11 a.m. EDT/1500 UTC, the center of Tropical Depression 25W (TD25W) was located near latitude 13.1 north and longitude 158.8 west. The storm is about 842 nautical miles (969 miles/1,559 km) east of Andersen Air Force Base, Guam, and moving west at 16 knots (18.4 mph/29.6 kph). Maximum sustained winds were near 25 knots (28.7 mph/46.3 kph). The Joint Typhoon Warning Center expects the depression to strengthen into a tropical storm by October 16 at which time it would be re-named Champi.

For updated forecasts for Guam, visit the National Weather Service website: <http://www.prh.noaa.gov/pr/guam/>.

The Joint Typhoon Warning Center forecast takes TD25W to the west-northwest north of Guam by October 16.

Provided by NASA's Goddard Space Flight Center

Citation: Suomi NPP spots twenty-fifth tropical depression in Northwestern Pacific (2015, October 13) retrieved 19 April 2024 from <https://phys.org/news/2015-10-suomi-npp-twenty-fifth-tropical-depression.html>

This document is subject to copyright. Apart from any fair dealing for the purpose of private study or research, no part may be reproduced without the written permission. The content is provided for information purposes only.