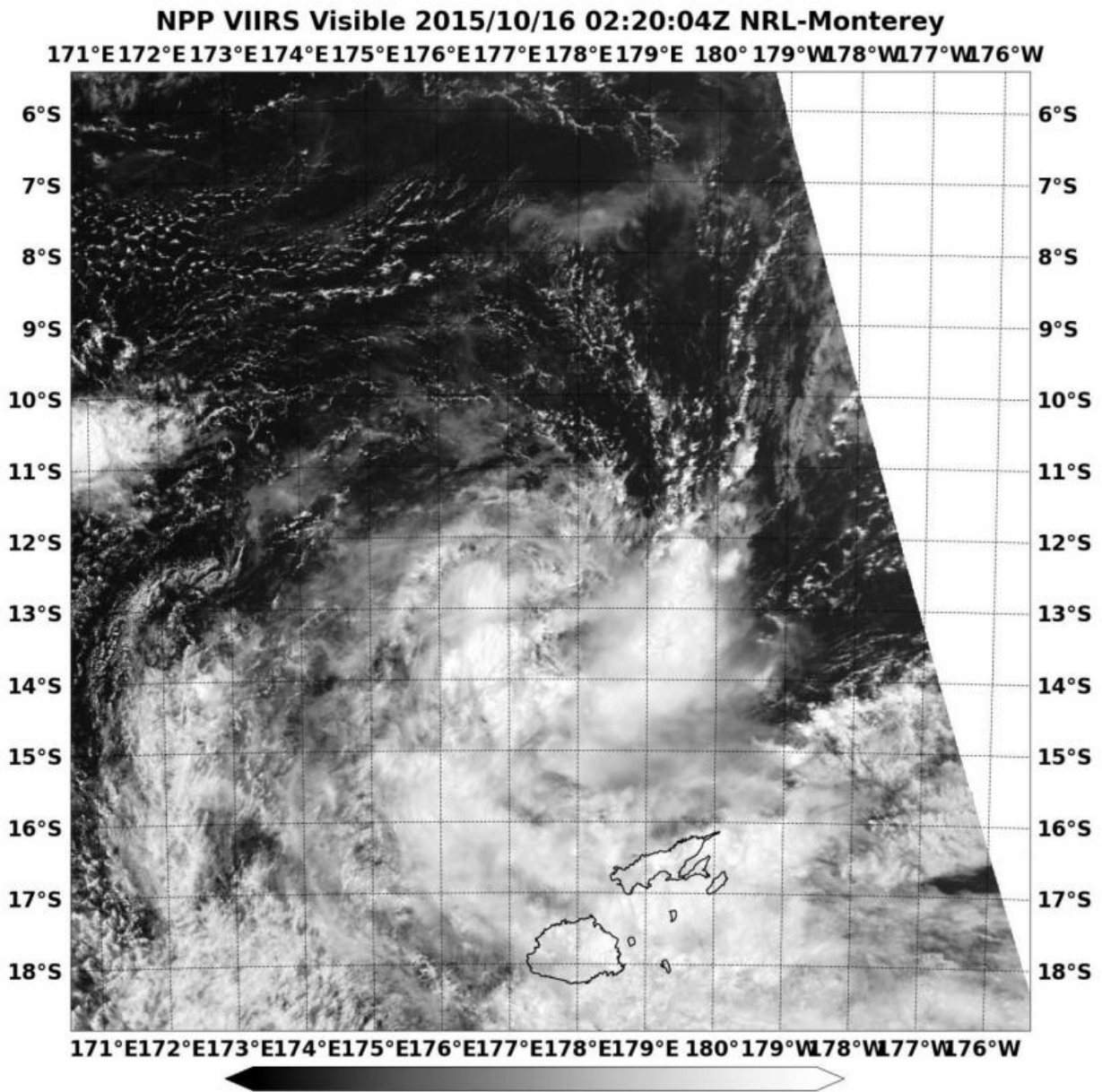


Suomi NPP satellite spots formation of second Southern Pacific tropical cyclone

October 16 2015, by Rob Gutro



NASA-NOAA's Suomi NPP satellite saw Tropical Storm 02P on Oct. 16 at 0220 UTC near Fiji. Credit: NASA/NRL/NOAA

Tropical Storm 02P developed about 300 miles away from Fiji as NASA-NOAA's Suomi NPP satellite captured a visible image of the storm.

The Visible Infrared Imaging Radiometer Suite (VIIRS) instrument aboard NASA-NOAA's Suomi NPP satellite saw Tropical Storm 02P on October 16 at 0220 (Oct. 15 at 10:20 p.m. EDT). The visible-light VIIRS image showed a band of thunderstorms southwest to southeast of the center of circulation.

On October 16, 2015 at 5 a.m. EDT/0900 UTC, the center of Tropical Storm 02P was located near latitude 13.1 South and longitude 177.1 East. The storm is about 309 nautical miles north-northwest of Suva, Fiji and moving south-southwest at 10 knots (11.5 mph/18.5 kph). Maximum sustained winds were near 35 knots (40 mph/62 kph).

02P is moving southwest and is expected to strengthen a little over the next day before running into [wind shear](#). The wind shear is expected to weaken it to a remnant low pressure area in a couple of days.

Provided by NASA's Goddard Space Flight Center

Citation: Suomi NPP satellite spots formation of second Southern Pacific tropical cyclone (2015, October 16) retrieved 3 May 2024 from <https://phys.org/news/2015-10-suomi-npp-satellite-formation-southern.html>

This document is subject to copyright. Apart from any fair dealing for the purpose of private study or research, no part may be reproduced without the written permission. The content is provided for information purposes only.