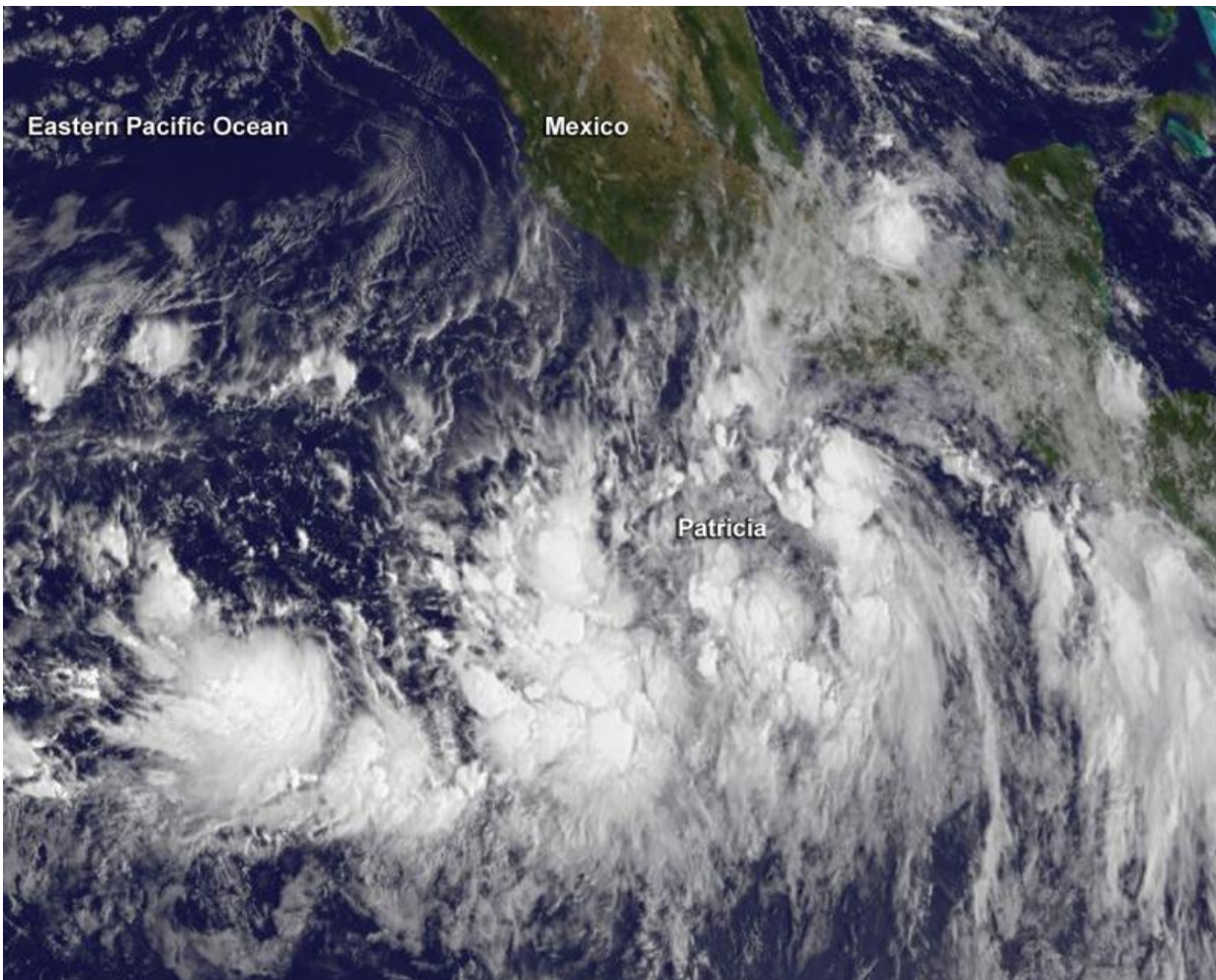


Satellite sees Tropical Storm Patricia form near Western Mexico coast

October 21 2015



NOAA's GOES-West satellite captured this visible image of Tropical Storm Patricia near the southwestern coast of Mexico on Oct. 21, 2015, at 1500 UTC (11 a.m. EDT). Credit: NASA/NOAA GOES Project

The low pressure area that was designated as System 97E on October 20 developed into the Eastern Pacific Ocean's twentieth tropical depression of the season at 11 a.m. EDT. By 11 p.m. the depression became Tropical Storm Patricia and was seen strengthening by NOAA's GOES-West satellite.

An image of the [tropical storm](#) was captured by NOAA's GOES-West satellite that showed the storm near the coast. GOES-West is managed by NOAA, but the image was created by the NASA/NOAA GOES Project at the NASA Goddard Space Flight Center, Greenbelt, Maryland.

Visible and microwave satellite data showed that Patricia remains poorly organized at 11 a.m. EDT on October 21, 2015. The low-level circulation appeared elongated from north to south. According to the National Hurricane Center, convection (and the thunderstorm development and precipitation) is occurring mainly in an almost linear area west and south of the center.

A Hurricane Watch is in effect from Lazaro Cardenas to Playa Perula and a Tropical Storm Watch is in effect from east of Lazaro Cardenas to Tecpan De Galeana. Hurricane conditions are possible within the hurricane watch area by early Friday, October 23. Tropical storm conditions are possible within the watch areas by late Thursday or early Friday.

At 11 a.m. EDT (1500 UTC) on October 21, 2015 the center of Tropical Storm Patricia was located near latitude 12.9 degrees north and longitude 97.5 degrees west. That's about 320 miles (515 km) south-southeast of Acapulco, Mexico. Patricia was moving toward the west near 12 mph (19 kph) and is expected to turn toward the west-northwest at night, then to the northwest on October 22. On the forecast track, the center of Patricia should approach the coast of southwestern Mexico on Friday,

October 23.

Maximum sustained winds are near 40 mph (65 kph) with higher gusts and strengthening is forecast during the next 48 hours. The National Hurricane Center expects Patricia to become a hurricane Thursday or Thursday night.

The National Hurricane Center noted that Patricia is expected to produce total rainfall accumulations of 6 to 12 inches, with isolated maximum amounts of 20 inches, over the Mexican states of Jalisco, Colima, Michoacan and Guerrero later Thursday into Saturday, October 24. These rains could produce life-threatening flash floods and mud slides.

For updated forecasts on Patricia, visit the National Hurricane Center website: <http://www.nhc.noaa.gov>

Provided by NASA's Goddard Space Flight Center

Citation: Satellite sees Tropical Storm Patricia form near Western Mexico coast (2015, October 21) retrieved 27 April 2024 from <https://phys.org/news/2015-10-satellite-tropical-storm-patricia-western.html>

This document is subject to copyright. Apart from any fair dealing for the purpose of private study or research, no part may be reproduced without the written permission. The content is provided for information purposes only.