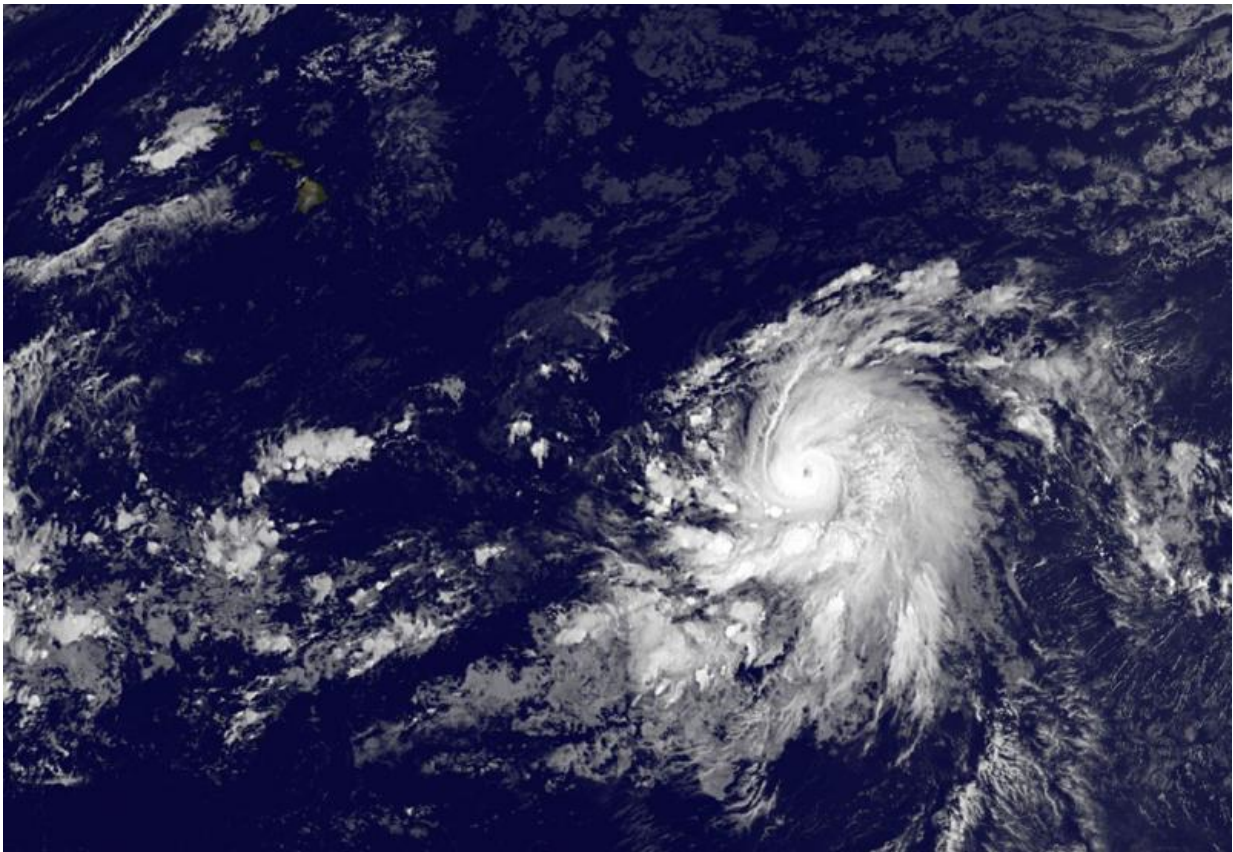


# Satellite animation shows Olaf grow into a major hurricane

October 19 2015

---



This GOES-West image from Oct. 19, 2015, at 1500 UTC (11 a.m. EDT) shows Hurricane Olaf a good distance from Hawaii (left). Credit: NASA/NOAA GOES Project

An animation of imagery from NOAA's GOES-West satellite over

several days showed Hurricane Olaf become a major hurricane on Monday, October 19, 2015. NASA's GOES Project created the animation that compiled three days of GOES data.

The 35 second animation of infrared and visible imagery runs from October 16 through October 19. On October 19, Olaf had strengthened into a [major hurricane](#). That's a Category three hurricane on the Saffir-Simpson Wind Scale. At the end of the animation on October 19, a small eye formed.

Olaf is located in the western area of the Eastern Pacific approaching the 140 degree longitude line, which marks the border with the Central Pacific. Olaf is expected to cross into the Central Pacific basin at night.

At 11 a.m. EDT (1500 UTC) on October 19 the eye of Hurricane Olaf was located near latitude 9.9 North and longitude 137.7 West. That's about 1,345 miles (2,160 km) east-southeast of Hilo, Hawaii. Olaf was moving toward the west near 14 mph (22 kph), and a turn toward the west-northwest is forecast at night followed by a west-northwestward motion through Wednesday, October 21.

Satellite [imagery](#) indicates that [maximum sustained winds](#) have increased to near 115 mph (185 km/h) with higher gusts. Olaf is a category 3 [hurricane](#) on the Saffir-Simpson Hurricane Wind Scale. Additional strengthening is forecast through tonight, with some fluctuations in intensity possible on October 20. The estimated minimum central pressure is 967 millibars.

Olaf is expected to curve northwest and move parallel from Hawaii by October 25 while remaining east of the islands. For updated forecasts, visit:

<http://www.nhc.noaa.gov/archive/2015/refresh/OLAF+shtml/145409.shtml>.

Provided by NASA's Goddard Space Flight Center

Citation: Satellite animation shows Olaf grow into a major hurricane (2015, October 19)  
retrieved 25 April 2024 from

<https://phys.org/news/2015-10-satellite-animation-olaf-major-hurricane.html>

This document is subject to copyright. Apart from any fair dealing for the purpose of private study or research, no part may be reproduced without the written permission. The content is provided for information purposes only.