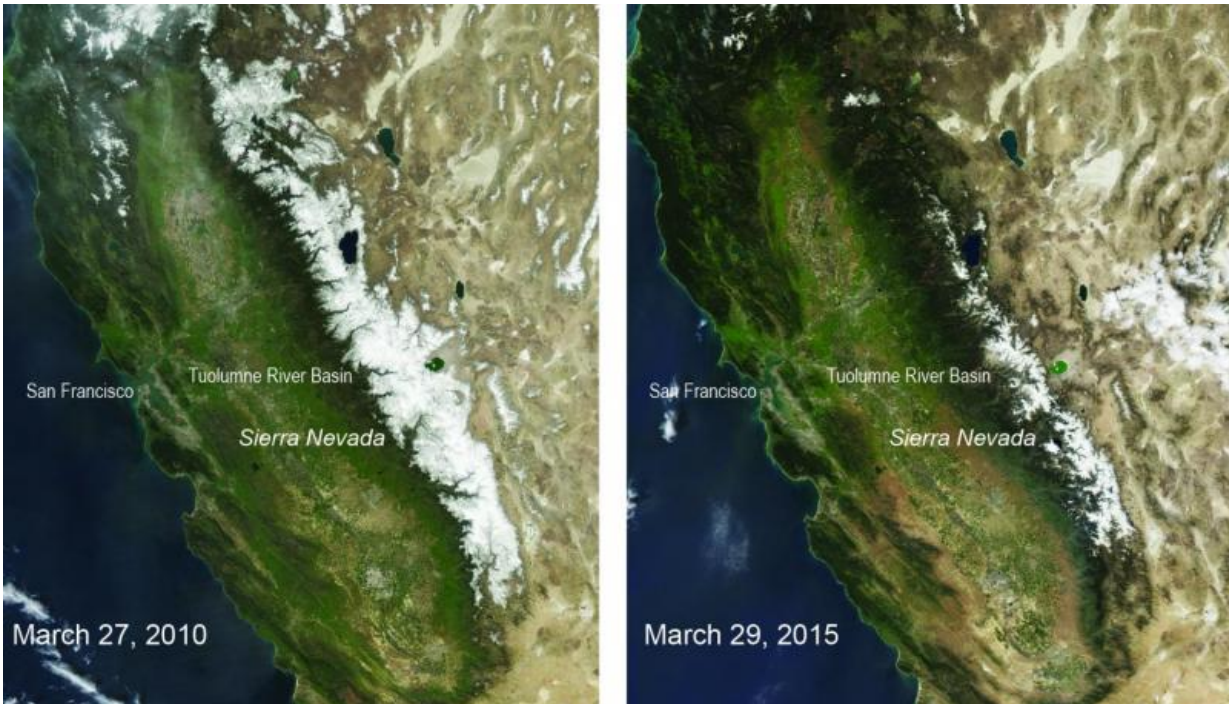


# Sierra Nevada snowpack lowest in 500 years

September 14 2015

---



These two natural-color satellite images of the snow cover in the Sierra Nevada in California and Nevada show the last year with average winter snowfall, 2010, compared with 2015 -- a year that had the lowest snowpack in 500 years. The images were taken by the Moderate Resolution Imaging Spectroradiometer on NASA's Aqua satellite. Credit: NASA/MODIS

Snowpack in California's Sierra Nevada in 2015 was at the lowest level in the past 500 years, according to a new report led by University of Arizona researchers.

The team's research is the first to show how the 2015 snowpack compares with snowpack levels for the previous five centuries.

"Our study really points to the extreme character of the 2014-15 winter. This is not just unprecedented over 80 years—it's unprecedented over 500 years," said Valerie Trouet, an associate professor of dendrochronology at the UA Laboratory of Tree-Ring Research.

"We should be prepared for this type of snow drought to occur much more frequently because of rising temperatures," Trouet said. "Anthropogenic warming is making the drought more severe."

California's current record-setting drought began in 2012, the researchers note in their report.

On April 1 of this year, California Gov. Jerry Brown declared the first-ever mandatory water restrictions throughout the state while standing on dry ground at 6,800-foot elevation in the Sierra Nevada. The historical average snowpack on that site is more than five feet, according to the California Department of Water Resources.

The lack of snow in 2015 stems from extremely low winter precipitation combined with record high temperatures in California in January, February and March, Trouet said. About 80 percent of California's precipitation occurs in the winter months, she said. Snowpack level is generally measured on April 1 each year, a time when the snowpack is at its peak.

"Snow is a natural storage system," she said. "In a summer-dry climate such as California, it's important that you can store water and access it in the summer when there's no precipitation."

In past years the snows of the Sierra Nevada slowly melted during the

warmer months of the year, and the meltwater replenished streams, lakes, groundwater and reservoirs. In a winter with less snow or with winter precipitation coming as rain rather than snow, there is less water to use during California's dry summers.

First author Soumaya Belmecheri said of the extremely low snowpack in 2015, "This has implications not only for urban water use, but also for wildfires."



The annual tree rings on these blue oaks (*Quercus douglasii*) in California's south Joaquin Valley show how much winter rain has fallen each year. The amount of winter rain in the valley is an indicator of how much winter precipitation falls in the Sierra Nevada mountains. By using tree-ring chronologies going back to 1405, a University of Arizona-led team of researchers figured out that snowpack in the Sierra Nevada in 2015 was at the lowest level in 500 years. Credit: Kevin

Anchukaitis

Belmecheri is a postdoctoral research associate at the UA Laboratory of Tree-Ring Research.

To figure out snowpack levels for the past 500 years, Trouet and her colleagues used previously published tree-ring data that reflects annual winter precipitation in central California from 1405 to 2005 and annual snowpack measurements since the 1930s. The team also used a previously published reconstruction of winter temperatures in southern and central California that spanned the years 1500 to 1980.

Trouet, Belmecheri and their colleagues' report, "Multi-century evaluation of Sierra Nevada snowpack," is scheduled for online publication in *Nature Climate Change* on Sept. 14, 2015.

Co-authors are Flurin Babst of the UA Laboratory of Tree-Ring Research, Eugene R. Wahl of the NOAA/National Centers for Environmental Information in Boulder, Colorado, and David W. Stahle of the University of Arkansas in Fayetteville.

The National Science Foundation, the U.S. Geological Survey and the Swiss National Science Foundation funded the research.

Trouet said, "There have been reconstructions of the drought conditions in California but no one's looked at the snowpack in particular."

After the extremely low snowpack levels in the Sierra Nevada were revealed in April, co-author Wahl wondered if it was possible to reconstruct the paleohistory of snowpack for those mountains.

Trouet thought the necessary data were available—so the team set to work.

Other researchers had already measured the width of tree rings for 1,505 blue oaks in California's Central Valley from 33 different sites.

Belmecheri and her colleagues put those measurements together as one long chronology, meaning the scientists had a blue oak tree-ring record that reached back reliably to the year 1405.

For those particular oaks (*Quercus douglasii*), the width of their annual rings reflects the winter precipitation they receive. Because the same storms that water the oaks also dump snow in the Sierra Nevada just to the west, the width of the blue oaks' rings is a good proxy for snowpack in the Sierras, Trouet said.

Wahl had already published a reconstruction of central and southern California February-March temperatures from 1500 to 1980 that is independent of the blue oak tree-ring records.

Snowpack in the Sierras has been measured approximately since the 1930s, so the researchers checked their snowpack estimates from tree rings and the temperature reconstruction against actual snowpack measurements for 1930 to 1980.

The different measurements all lined up - when winter precipitation was lower and temperature was higher, snowpack was lower.

Peak snowpack is the measurement that hydrologists use to predict the amount of runoff that will occur in the summer, Trouet said.

The team's next step, she said, is investigating and reconstructing the atmospheric circulation patterns that contribute to the California drought and the Sierra Nevada [snowpack](#).

**More information:** *Nature Climate Change*, [DOI: 10.1038/nclimate2809](https://doi.org/10.1038/nclimate2809)

Provided by University of Arizona

Citation: Sierra Nevada snowpack lowest in 500 years (2015, September 14) retrieved 26 April 2024 from <https://phys.org/news/2015-09-sierra-nevada-snowpack-lowest-years.html>

This document is subject to copyright. Apart from any fair dealing for the purpose of private study or research, no part may be reproduced without the written permission. The content is provided for information purposes only.