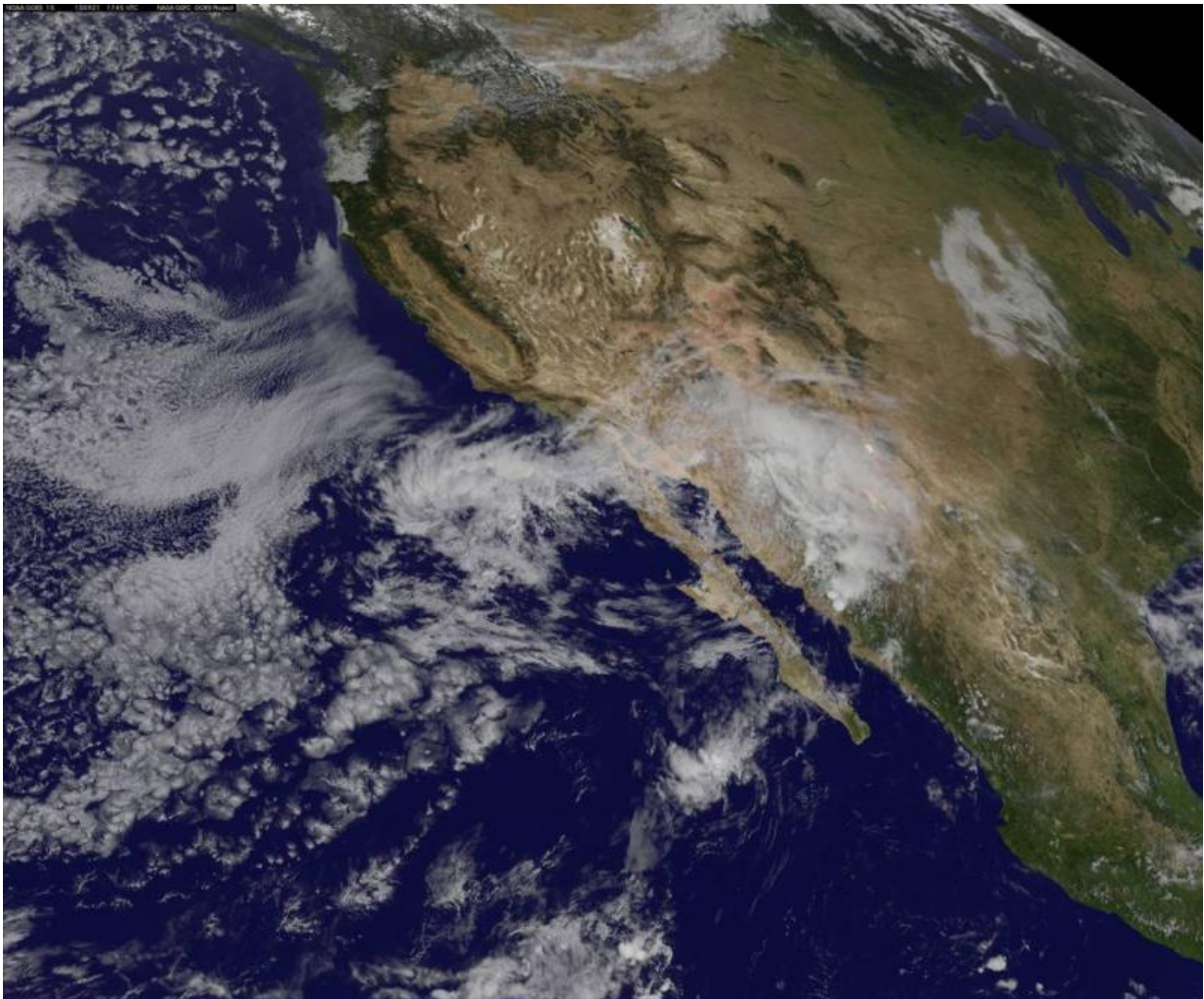


Remnants of Tropical Depression 16E raining over US Southwest

September 22 2015



This visible image of the US Southwest and western Mexico was taken from NOAA's GOES-West satellite on Sept. 21 at 1745 and showed the clouds of TD16E over northwestern Mexico. Credit: NASA/NOAA GOES Project

The remnants of Tropical Depression 16E (TD16E) have moved over the U.S. Southwest and an infrared image from NOAA's GOES-West satellite showed the associated clouds over Arizona and New Mexico.

The National Weather Service Weather Prediction Center (WPC) in College Park, Maryland, noted that light to moderate rain is expected to continue for central Arizona and New Mexico on Sept. 22. Flash flood watches are still in effect for portions of eastern Arizona and western New Mexico.

At 0900 UTC (5 a.m. EDT), the WPC noted that there was no discernable surface circulation and an [infrared image](#) from the GOES-West satellite taken at 1200 UTC (8 a.m. EDT/5 a.m. PDT) showed a stream of clouds from southwest to northeast over Arizona and New Mexico. The image was created at the NASA/NOAA GOES project at NASA's Goddard Space Flight Center, Greenbelt, Maryland.

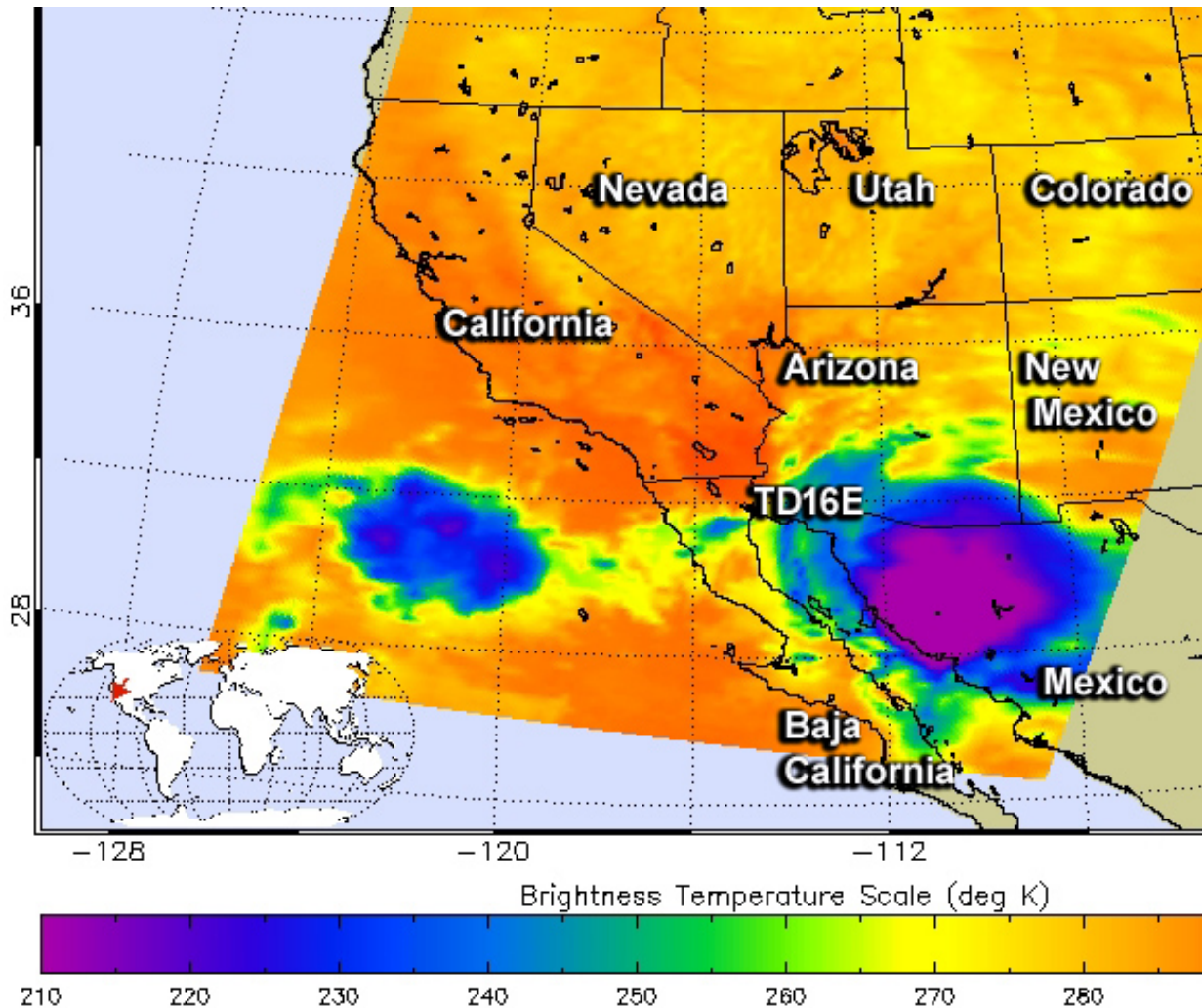
The WPC noted that TD16E's remnants should continue moving in a northeast direction with heavy rain developing in northeast New Mexico and eventually portions of the central high plains.

Selected storm total rainfall: in inches through 4 a.m. EDT on Sept. 22

Arizona

- Dan Saddle 4.61
- Park Tank 3.94
- Calabasas Canyon 3.31
- Manning Camp/Rincon Mountains 3.23
- Italian Trap 3.23
- Peck Canyon 2.87
- Florida Canyon 2.83
- Arivaca Lake 2.80

- Nogales International Airport 1.93



This false-colored infrared image from the AIRS instrument aboard NASA's Aqua satellite shows cold cloud top temperatures (purple) of TD16E on Sept. 21 at 5:35 a.m. EDT). Credit: NASA JPL, Ed Olsen

Provided by NASA's Goddard Space Flight Center

Citation: Remnants of Tropical Depression 16E raining over US Southwest (2015, September 22)
retrieved 25 April 2024 from

<https://phys.org/news/2015-09-remnants-tropical-depression-16e-southwest.html>

This document is subject to copyright. Apart from any fair dealing for the purpose of private study or research, no part may be reproduced without the written permission. The content is provided for information purposes only.