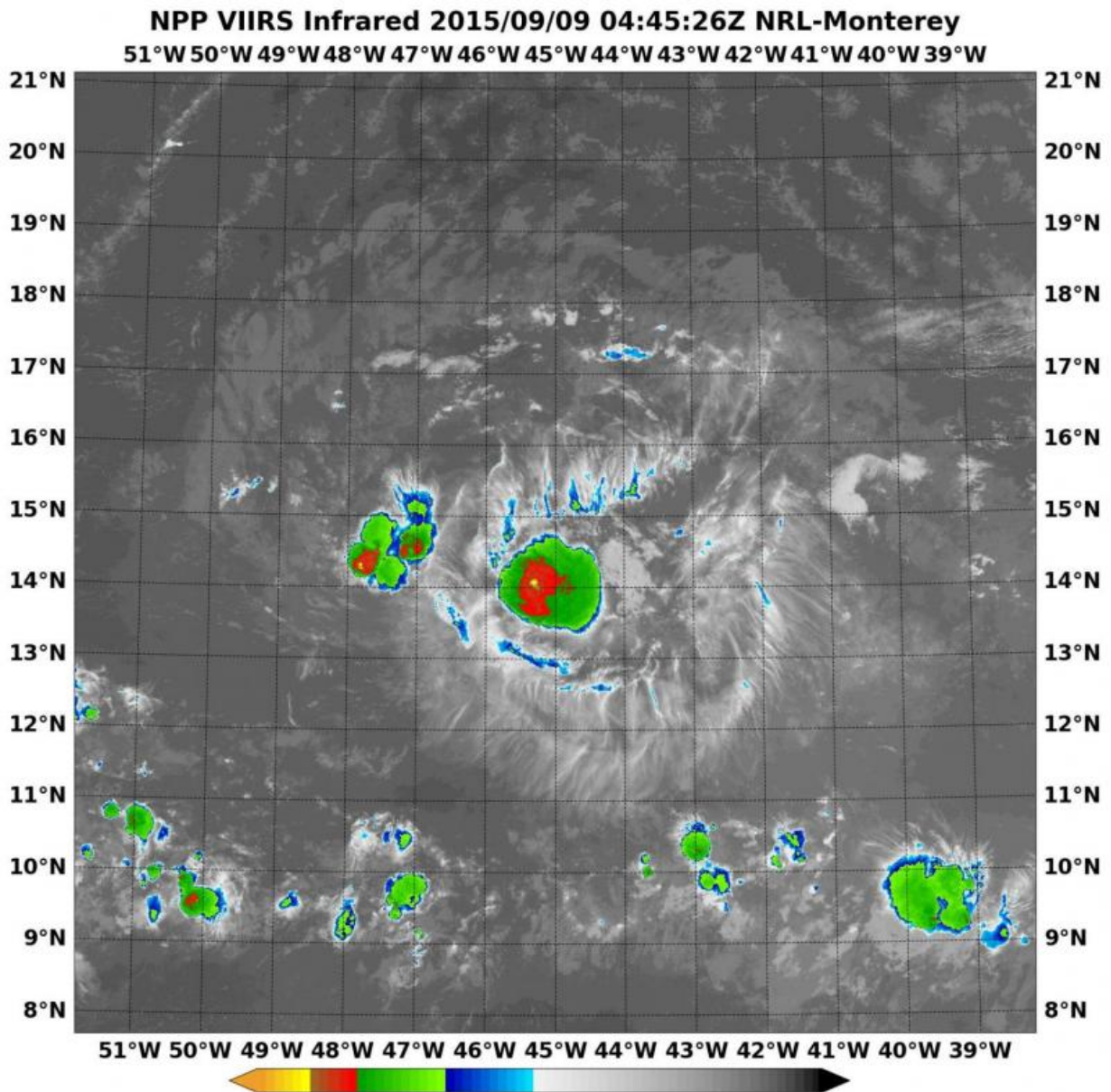


NASA sees former tropical storm bow out 'Grace-fully'

September 9 2015, by Rob Gutro



NASA-NOAA's Suomi satellite flew over Grace at 4:45 UTC (12:45 a.m. EDT) on Sept. 9 and the VIIRS instrument aboard captured this infrared image. Satellite data showed Grace no longer had a closed circulation. Credit: NRL/NASA/NOAA

NASA-NOAA's Suomi NPP satellite passed over former Tropical Storm Grace and saw the storm had weakened into an open wave of low pressure. Wind data from NASA's RapidScat was also used to confirm Grace's degeneration.

NASA-NOAA's Suomi satellite flew over Grace at 4:45 UTC (12:45 a.m. EDT) on Sept. 9 and the VIIRS instrument aboard captured an infrared image of the storm. Satellite data showed Grace no longer had a closed circulation and is now an open wave.

At 11 a.m. EDT (1500 UTC), on September 9, the remnants of Grace were located near latitude 14.5 North and longitude 49.0 West. That puts Grace's remnants about 825 miles (1,325 km) east of the Lesser Antilles.

The remnants were moving toward the west near 18 mph (30 kph) and this general motion is expected to continue over the next couple of days. Maximum sustained winds were near 30 mph (45 kph) with higher gusts. The National Hurricane Center said that "little change in strength is expected over the next day or two." The estimated minimum central pressure is 1008 millibars.

NHC Forecaster Pasch noted that "Data from the RapidScat instrument onboard the International Space Station showed that there were no longer any westerly surface winds in Grace. This was confirmed by animation of high-resolution visible imagery that showed no westerly low-cloud motions." Since Grace had opened up into a wave, the

National Hurricane Center issued its final advisory.

Grace's remnant wave is expected to continue moving quickly to the west. NHC noted that the remnants could produce some gusty winds and showers over portions of the Lesser Antilles within a couple of days.

Provided by NASA's Goddard Space Flight Center

Citation: NASA sees former tropical storm bow out 'Grace-fully' (2015, September 9) retrieved 9 April 2024 from <https://phys.org/news/2015-09-nasa-tropical-storm-grace-fully.html>

This document is subject to copyright. Apart from any fair dealing for the purpose of private study or research, no part may be reproduced without the written permission. The content is provided for information purposes only.