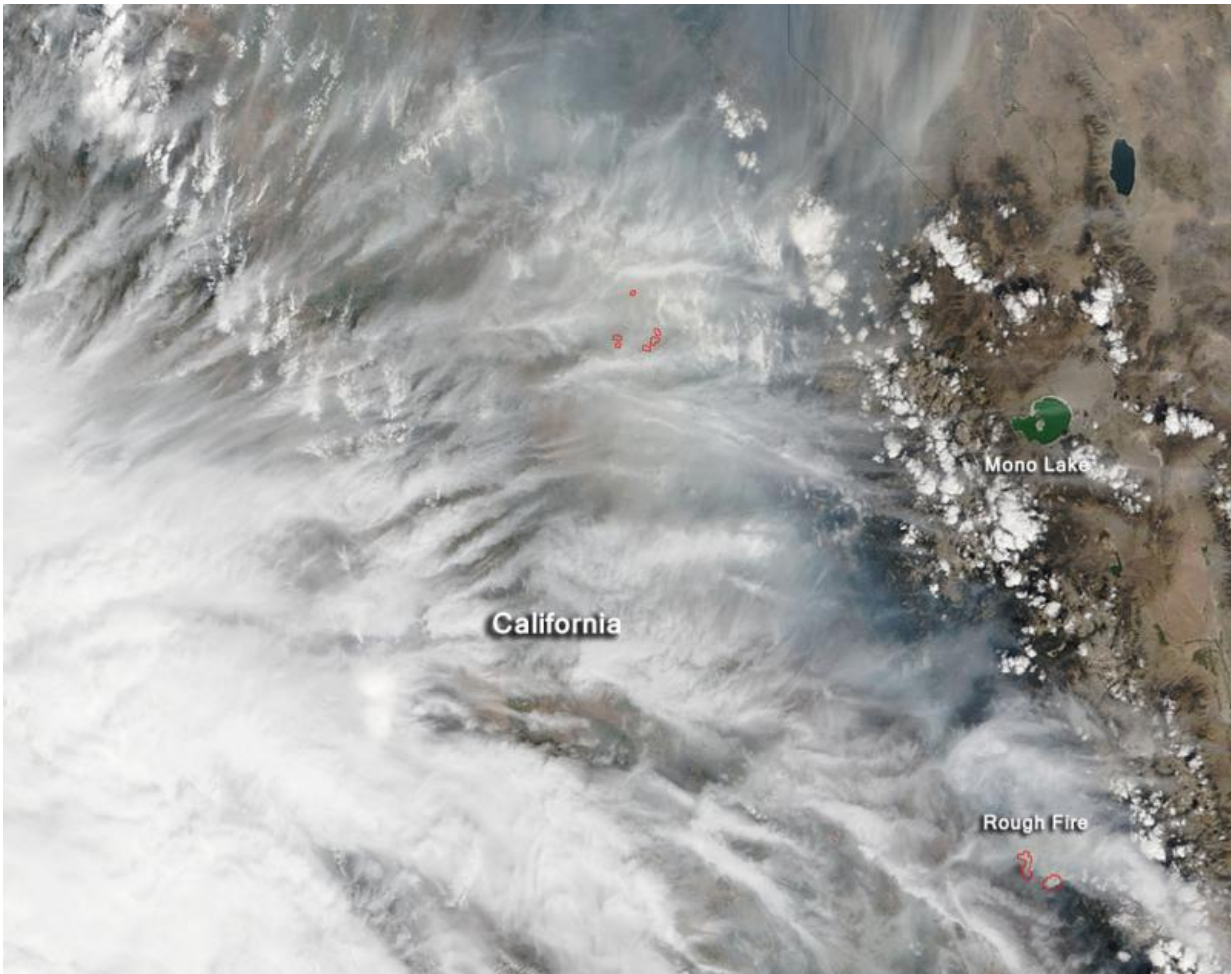


# Image: Rough fire still burning in California

September 15 2015

---



Credit: NASA image courtesy Jeff Schmaltz, MODIS Rapid Response Team.  
Caption: NASA/Goddard, Lynn Jenner with information from Inciweb

Clouds over California are obscuring the telltale signs of fire activity.

Smoke and clouds are intermingling in this natural-color image which was collected by the Moderate Resolution Imaging Spectroradiometer (MODIS) aboard the Terra satellite on September 12, 2015.

The Rough Fire's total acreage increased to 138,053 acres and is currently the largest active fire in California. There are 3,229 personnel currently assigned to the Rough Fire. Containment remains at 40%. New evacuations and warnings were issued on September 12, 2015. This information can be found [here](#).

According to Inciweb, "Heavy concentrations of smoke are expected near the fire and to the west foothills today. Smoke will be slow to lift and transport will be primarily terrain and diurnally driven. Limited ventilation is forecast for today with continued increased impacts expected in the San Joaquin Valley west and northwest of fire. Unhealthy to Hazardous conditions are expected in the foothill communities west and northwest of the [fire](#)."

Actively burning areas, detected by MODIS's thermal bands, are outlined in red.

Provided by NASA

Citation: Image: Rough fire still burning in California (2015, September 15) retrieved 12 May 2024 from <https://phys.org/news/2015-09-image-rough-california.html>

This document is subject to copyright. Apart from any fair dealing for the purpose of private study or research, no part may be reproduced without the written permission. The content is provided for information purposes only.