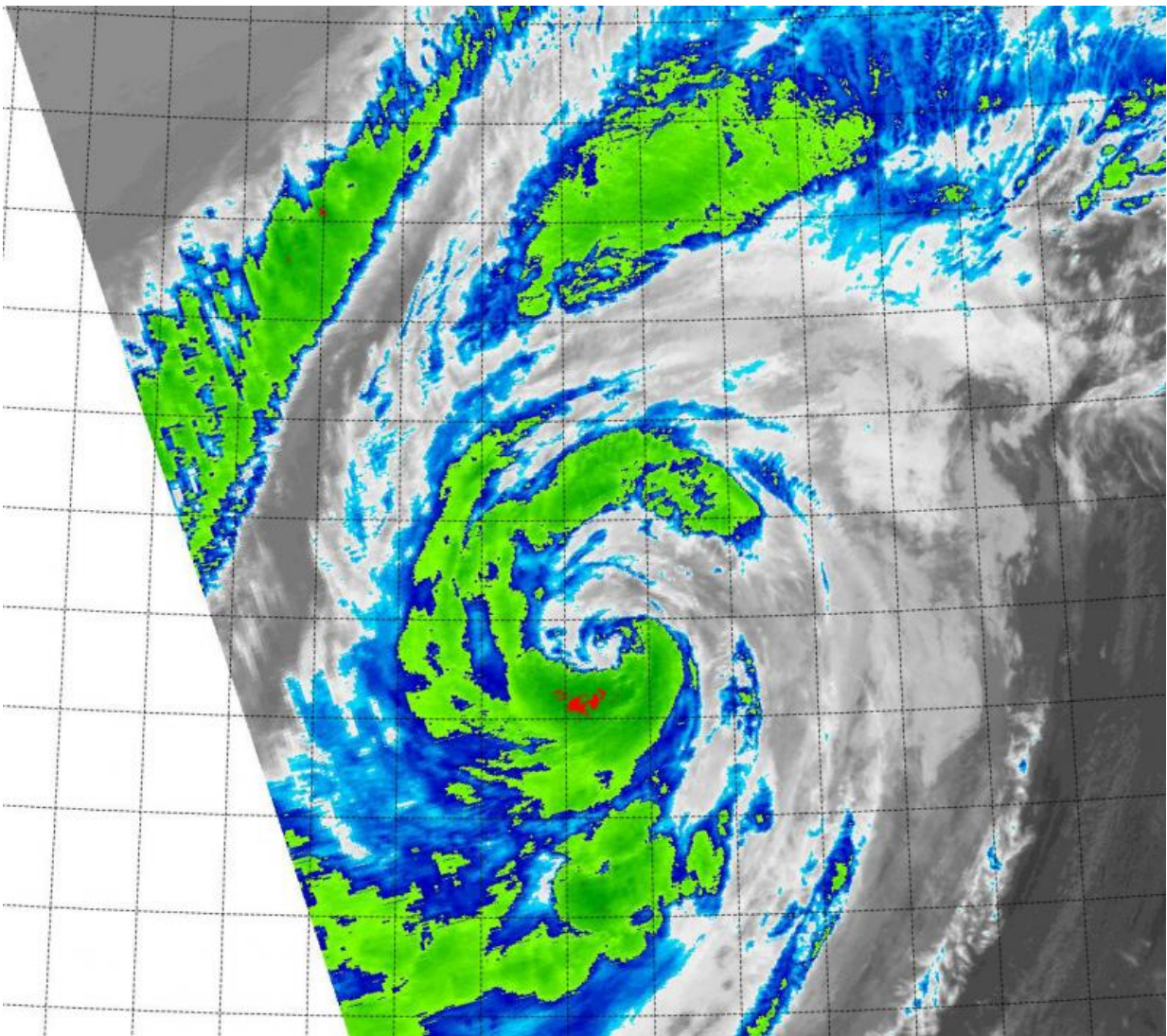


Terra satellite sees Tropical Storm Atsani stretching out

August 24 2015, by Rob Gutro



On Aug. 24 at 11:40 (7:40 a.m. EDT) the MODIS instrument aboard NASA's Terra satellite captured infrared image of Tropical Storm Atsani. Red indicates

coldest cloud tops. Credit: NRL/NASA

Tropical Storm Atsani appeared elongated when NASA's Terra satellite passed overhead. Atsani weakened to a tropical storm on August 24, 2015.

On Aug. 24 at 11:40 (7:40 a.m. EDT) the Moderate Resolution Imaging Spectroradiometer or MODIS instrument aboard NASA's Terra satellite captured [infrared data](#) on Tropical Storm Atsani. Atsani appeared to be somewhat elongated from southwest to northeast. Infrared data also showed that the eastern quadrant appeared almost devoid of thunderstorm activity. However, the other quadrants of the storm maintained powerful thunderstorms with cold cloud top temperatures near -63F/-53C. The coldest cloud tops appeared south of the center of circulation.

Although the southern part of the tropical storm is under low to moderate [vertical wind shear](#), the northern part of the storm is dealing with stronger wind shear and is interacting with the westerlies (winds).

At 1500 UTC (11 a.m. EDT) on August 24, Tropical Storm Atsani had maximum sustained winds near 65 knots (75 mph/120 kph). It was centered near 32.9 North latitude and 150.8 East longitude, about 570 nautical miles (655.9 miles/1,056 km) south-southwest of Yokosuka, Japan. Atsani was moving to the east-northeast at 14 knots (16.1 mph/25.3 kph).

Forecasters at the Joint Typhoon Warning Center (JTWC) noted that [sea surface temperatures](#) will drop below 26.6 Celsius (80 Fahrenheit) over the 12 to 24 hours from 1500 UTC (11 a.m. EDT) on August 24. When sea surface temperatures fall below that threshold, a tropical cyclone

cannot sustain strength. JTWC expects that Atsani will then begin changing to an extra-[tropical storm](#).

Provided by NASA's Goddard Space Flight Center

Citation: Terra satellite sees Tropical Storm Atsani stretching out (2015, August 24) retrieved 20 June 2024 from <https://phys.org/news/2015-08-terra-satellite-tropical-storm-atsani.html>

This document is subject to copyright. Apart from any fair dealing for the purpose of private study or research, no part may be reproduced without the written permission. The content is provided for information purposes only.