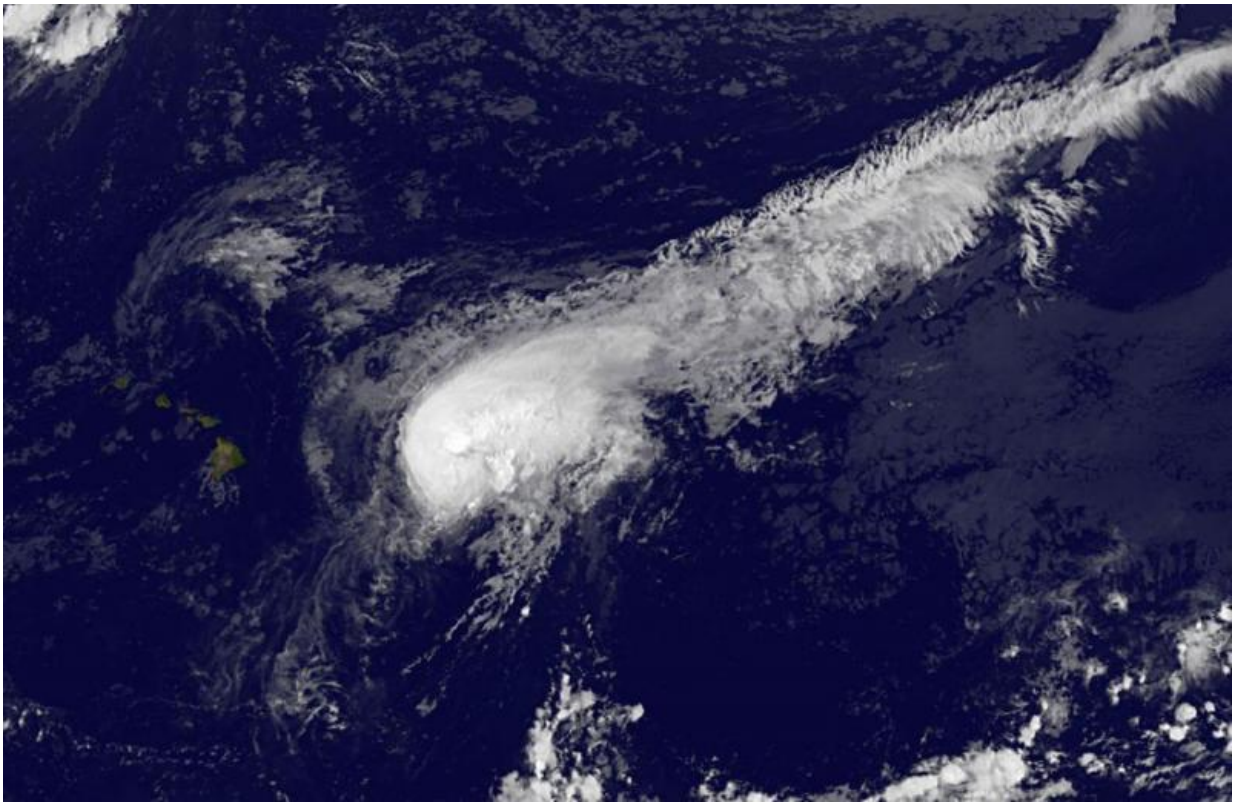


Satellite sees Tropical Storm Guillermo nearing Hawaii

August 4 2015



This infrared image of Tropical Storm Guillermo was taken from NOAA's GOES-West satellite on Aug. 4 at 1200 UTC (8 a.m. EDT) as it nears Hawaii. Credit: NASA/NOAA GOES Project

Tropical Storm Guillermo continued to creep closer to the Hawaiian Islands on Aug. 4, and NOAA's GOES-West satellite captured an image

of the weakening storm. Westerly wind shear is pushing a stream of clouds to the northeast of the center, making it appear as if Guillermo has a long tail stretching back toward Mexico.

Guillermo is getting so close, in fact, that a [tropical storm](#) watch is now in effect for Hawaii county and Maui County, including the [islands](#) of Maui, Molokai, Lanai and Kahoolawe. A tropical storm watch means that tropical storm conditions are possible within the watch area, in this case within 36 to 48 hours.

An infrared image of Tropical Storm Guillermo was taken from NOAA's GOES-West satellite on Aug. 4 at 1200 UTC (8 a.m. EDT) as it neared Hawaii. NOAA manages the GOES series of satellites and the NASA/NOAA GOES Project at NASA's Goddard Space Flight Center in Greenbelt, Maryland creates images and animations of the GOES satellite data. The image showed that Guillermo appears more elongated, and appears to have developed a "tail." The tail is actually a stream of clouds being pushed to the northeast of the storm from westerly winds.

At 11 a.m. EDT (5 a.m. HST/1500 UTC) on Aug. 4 the center of tropical storm Guillermo was located near latitude 19.7 north and longitude 148.5 west. Guillermo is moving toward the northwest near 12 mph (19 kph) and the storm is expected to shift to the west-northwest late on Aug. 4 through Aug. 6.

Maximum sustained winds are near 70 mph (110 kph), and little change in strength is expected on Aug. 4 with slow and steady weakening anticipated thereafter. The estimated minimum central pressure is 989 millibars.

On the forecast track, the Central Pacific Hurricane Center forecasts the center of Guillermo is expected to pass 215 miles northeast of Hilo Wednesday afternoon, Aug. 5 and around 165 miles north of Maui

Wednesday night.

So what can the Hawaiian Islands expect from Guillermo as it passes by?

The National Hurricane Center noted that tropical storm conditions are possible on the big island of Hawaii and the islands of Maui, Molokai, Lanai and Kahoolawe in Maui County on Aug. 5. Guillermo is expected to generate between 1 to 3 inches of rainfall with isolated maximum amounts near 7 inches mainly in higher terrain. In addition, rough and large surf is expected along east-facing shores of the main Hawaiian Islands through much of the week.

For updated forecasts, visit the Central Pacific Hurricane Center website: <http://www.prh.noaa.gov>.

Provided by NASA's Goddard Space Flight Center

Citation: Satellite sees Tropical Storm Guillermo nearing Hawaii (2015, August 4) retrieved 24 April 2024 from <https://phys.org/news/2015-08-satellite-tropical-storm-guillermo-nearing.html>

This document is subject to copyright. Apart from any fair dealing for the purpose of private study or research, no part may be reproduced without the written permission. The content is provided for information purposes only.