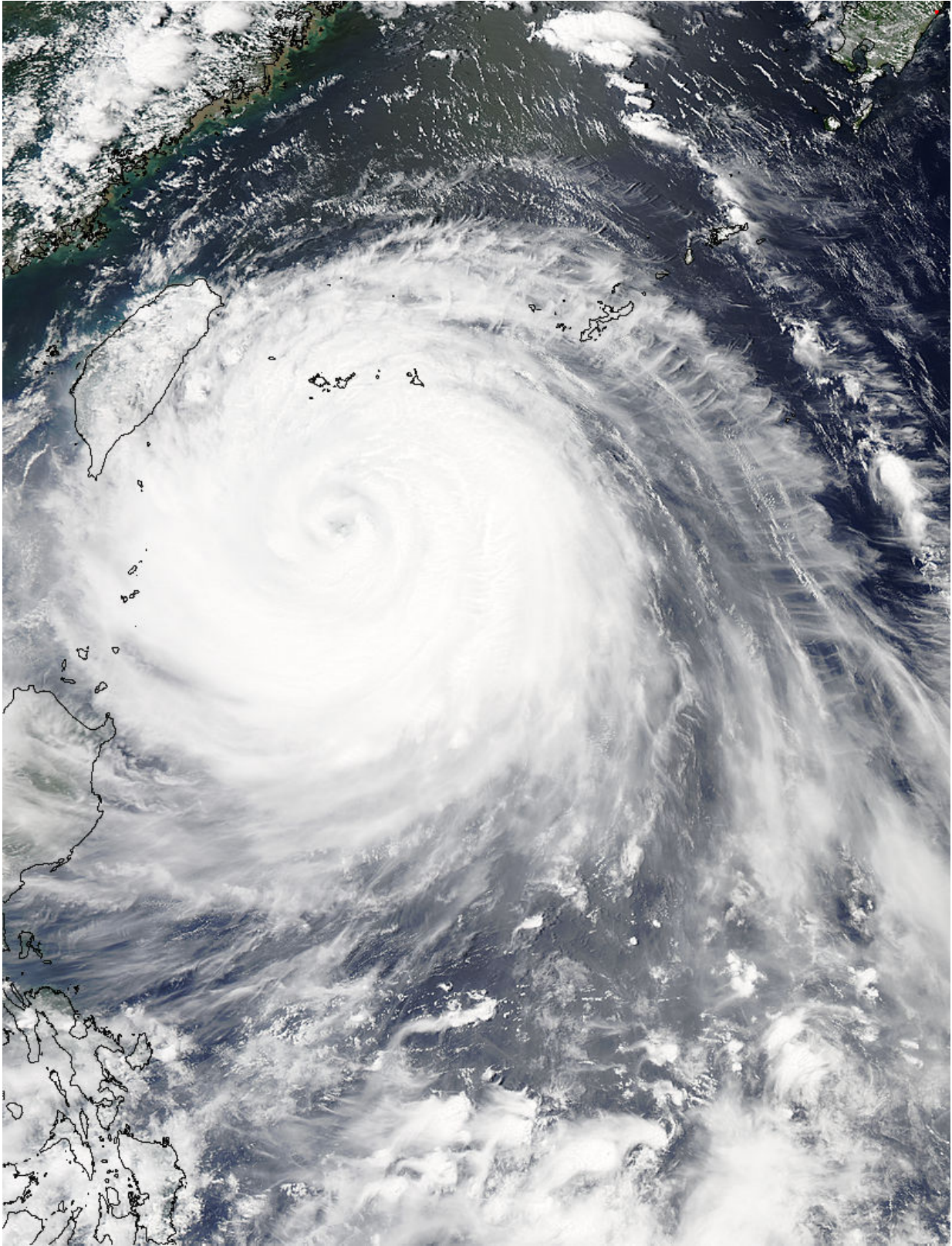


# **NASA sees a wider-eyed Typhoon Soudelor near Taiwan**

August 7 2015

---



The MODIS instrument aboard NASA's Aqua satellite flew over Typhoon

Soudelor on Aug. 7, 2015, at 4:40 UTC (12:40 a.m. EDT) as it was approaching Taiwan. Credit: NASA Goddard's MODIS Rapid Response Team

Clouds in Typhoon Soudelor's western quadrant were already spreading over Taiwan early on August 7 when NASA's Aqua satellite passed overhead. Soudelor is expected to make landfall and cross central Taiwan today and make a second landfall in eastern China. NASA satellite imagery revealed that Soudelor's eye "opened" five more miles since August 4.

On Aug. 7 at 4:40 UTC (12:40 a.m. EDT) the Moderate Resolution Imaging Spectroradiometer or MODIS instrument aboard NASA's Aqua satellite captured a visible-light image of Typhoon Soudelor as its western quadrant began brushing eastern Taiwan. The MODIS image showed Soudelor's 17-nautical-mile-wide eye and thick bands of powerful thunderstorms surrounded the storm and spiraled into the center.

Just three days before, the eye was 5 nautical miles smaller when the storm was more intense. On Aug. 4 at 4:10 UTC (12:10 a.m. EDT) Aqua's MODIS image showed the eye was 12-nautical-mile-wide eye.

At 1500 UTC (11 a.m. EDT) on August 7, 2015, the Joint Typhoon Warning Center (JTWC) noted that Typhoon Soudelor's maximum sustained winds increased from 90 knots (103.6 mph/166.7 kph) to 105 knots (120.8 mph / 194.5 kph). It was centered near 23.1 North latitude and 123.2 East longitude, about 183 nautical miles (210.6 miles/338.9 km) southeast of Taipei, Taiwan. It was moving to the west-northwest at 10 knots (11.5 mph/18.5 kph).

For warnings and watches for Taiwan, visit the Central Weather Bureau

website: <http://www.cwb.gov.tw/eng/>. For warnings in China, visit the China Meteorological Administration website: <http://www.cma.gov.cn/en>.

Soudelor's final landfall is expected in eastern China on Saturday, August 8

Provided by NASA's Goddard Space Flight Center

Citation: NASA sees a wider-eyed Typhoon Soudelor near Taiwan (2015, August 7) retrieved 20 March 2024 from <https://phys.org/news/2015-08-nasa-wider-eyed-typhoon-soudelor-taiwan.html>

<p>This document is subject to copyright. Apart from any fair dealing for the purpose of private study or research, no part may be reproduced without the written permission. The content is provided for information purposes only.</p>
--