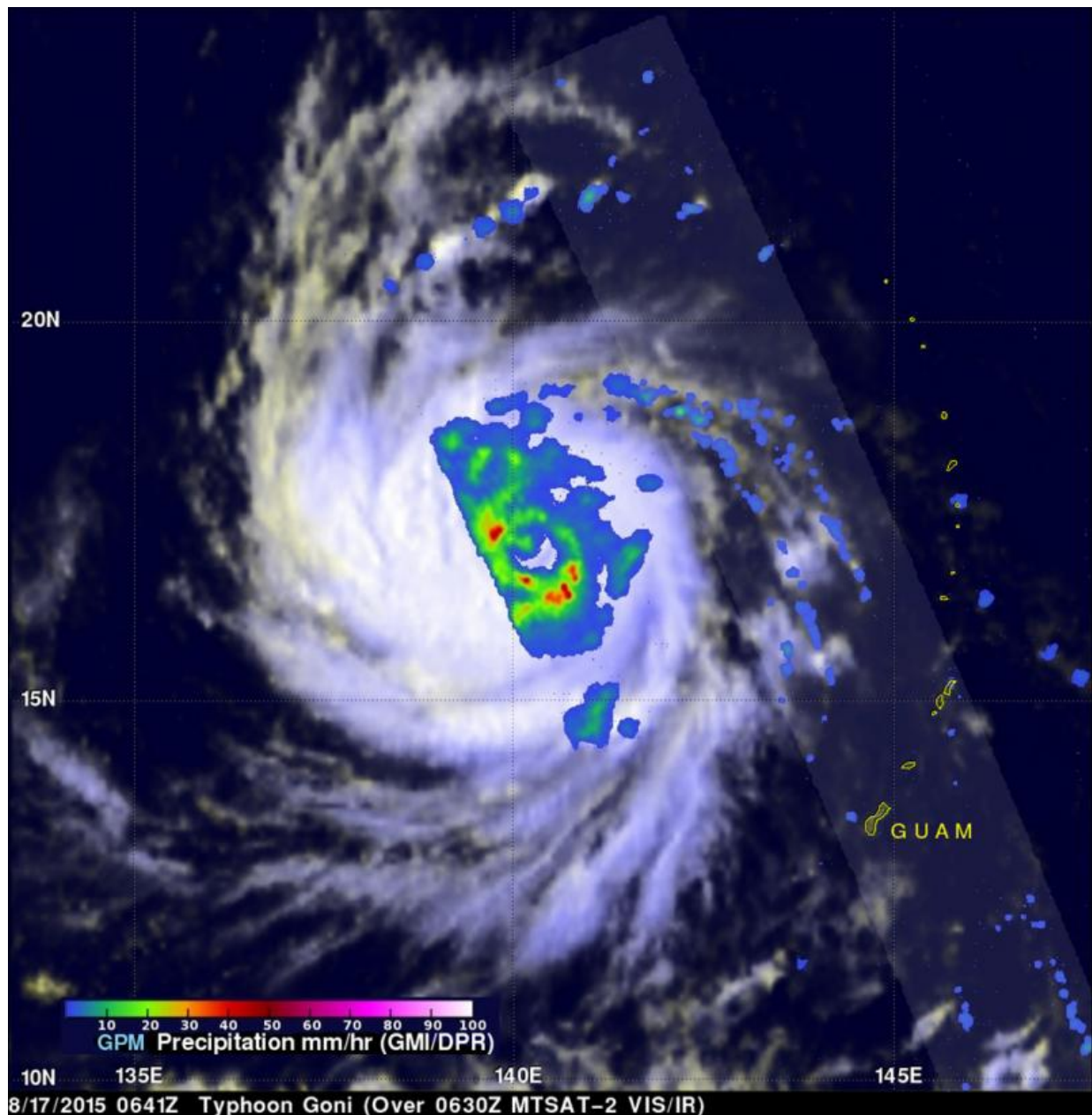


NASA's GPM looks inside Typhoon Goni

GPM image of Goni

August 17 2015, by Rob Gutro



The GPM passed over Goni on August 17, 2015 at 0641 UTC when the storm was northwest of Guam. and saw strong storms around the eye were dropping heavy (red) rain at a rate of over 65 mm (2.6 inches) per hour. Credit: NASA/SSAI/JAXA, Hal Pierce

The Global Precipitation Measurement or GPM mission core satellite passed over Typhoon Goni and gathered data about its rainfall rates and powerful thunderstorms.

Typhoon Goni appears to be somewhat following the path of last week's Typhoon Soudelor. Last week deadly typhoon Soudelor caused at least 22 deaths in Taiwan and China.

On August 14 at 1500 UTC (11 a.m. EDT) Tropical Depression 16W was renamed Tropical Storm Goni. On August 16 at 1500 UTC (11 a.m. EDT), Goni strengthened into a [typhoon](#).

The GPM core observatory satellite recently had two good views of intensifying Typhoon Goni that formed on August 14, 2015 in the same area of the Pacific Ocean as Typhoon Soudelor.

The GPM passed over Goni on August 17, 2015 at 0641 UTC when the storm was northwest of Guam. GPM revealed a well-defined eye. GPM's Microwave Imager (GMI) discovered that strong storms surrounding Goni's eye were dropping rain at a rate of over 65 mm (2.6 inches) per hour.

At 1500 UTC (11 a.m. EDT), on August 17, Typhoon Goni had maximum sustained winds near 115 knots (132.3 mph/213 kph). It was centered near 17.4 North latitude and 139.3 East longitude, about 392

nautical miles (451 miles/726km) east-southeast of Andersen Air Force Base, Guam. Goni was moving to the west-northwest at 12 knots (13.8 mph/22.2 kph).

The Joint Typhoon Warning Center forecast calls for Goni to strengthen to 130 knots by August 20. It is expected to pass close to Luzon, Philippines and then turn to the northwest toward northern Taiwan.

Provided by NASA's Goddard Space Flight Center

Citation: NASA's GPM looks inside Typhoon Goni GPM image of Goni (2015, August 17)
retrieved 5 August 2024 from

<https://phys.org/news/2015-08-nasa-gpm-typhoon-goni-image.html>

This document is subject to copyright. Apart from any fair dealing for the purpose of private study or research, no part may be reproduced without the written permission. The content is provided for information purposes only.