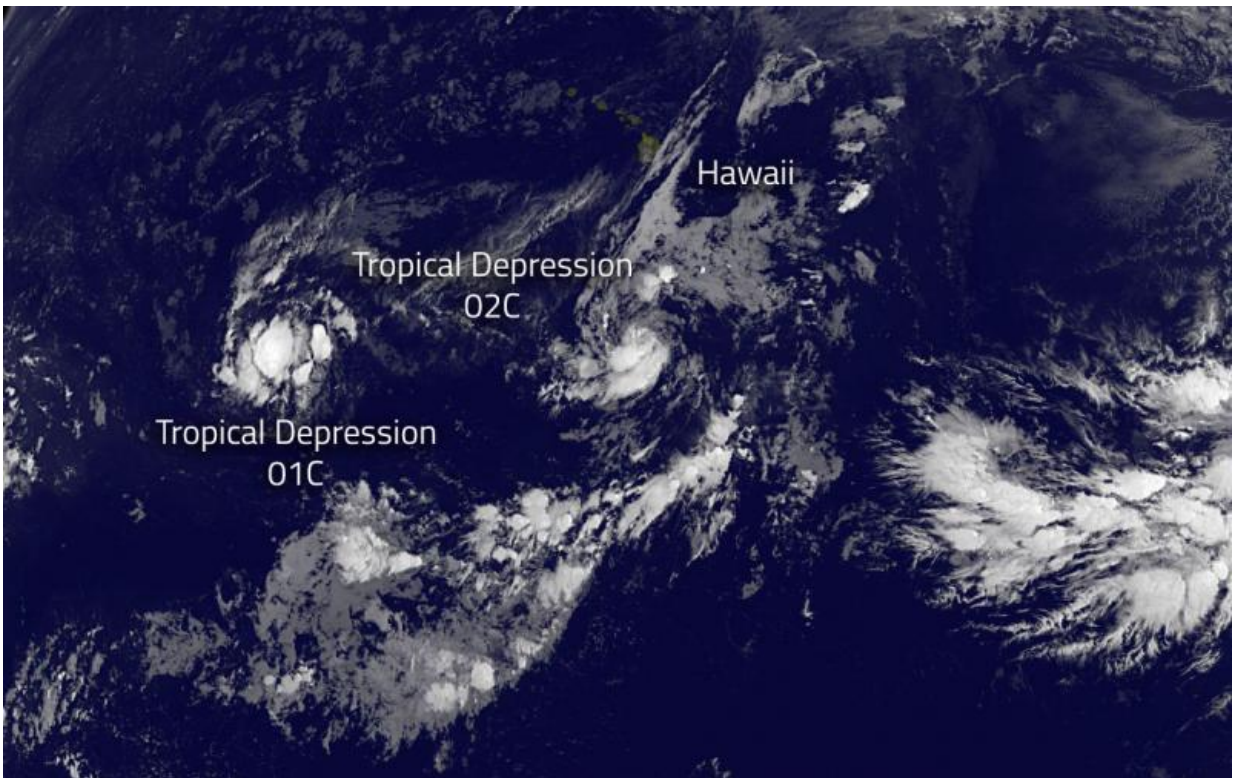


# Satellite shows newborn Tropical Depression 02C form in Central Pacific

July 10 2015, by Rob Gutro

---



NOAA's GOES-West satellite captured this infrared image of Tropical Depression 1C and 2C in the Central Pacific Ocean at 1200 UTC (8 a.m. EDT) on July 10. Credit: NASA/NOAA GOES Project

NOAA's GOES-West satellite saw that Hawaii is in the middle of a triangle of tropical cyclones. Tropical Depression 02C formed over 700

hundred miles south-southeast of Hawaii on July 10.

There are three [tropical cyclones](#) in the Central Pacific Ocean and Hawaii is in the middle of them. On July 10, newborn Tropical Depression 01C was west of Hawaii, while newborn Tropical Depression 02C was south of the Big Island. Post-Tropical Depression Ela was fizzling northeast of Hawaii.

NOAA's GOES-West satellite provided an infrared image of the newborn depression that showed bands of thunderstorms from the west of center, wrapping south to east of the center of circulation. The image was created from NASA/NOAA's GOES Project at NASA's Goddard Space Flight Center in Greenbelt, Maryland

At 5 a.m. HST (11 a.m. EDT/1500 UTC) the center of Tropical Depression Two-C (TD2C) was located near latitude 11.4 north and 155.2 west. That puts the storm about about 705 miles (1,135 km) south-southeast of Honolulu Hawaii and about 575 miles (920 km) south of Hilo, Hawaii. TD1C was moving toward the northwest near 6 mph (9 kph) and is expected to turn to the west on July 11.

NOAA's Central Pacific Hurricane Center noted that [maximum sustained winds](#) were near 35 mph (55 kph) with higher gusts. The depression is expected to reach tropical storm strength later today. The estimated minimum central pressure is 1005 millibars.

Provided by NASA's Goddard Space Flight Center

Citation: Satellite shows newborn Tropical Depression 02C form in Central Pacific (2015, July 10) retrieved 10 April 2024 from <https://phys.org/news/2015-07-satellite-newborn-tropical-depression-02c.html>

This document is subject to copyright. Apart from any fair dealing for the purpose of private study or research, no part may be reproduced without the written permission. The content is provided for information purposes only.