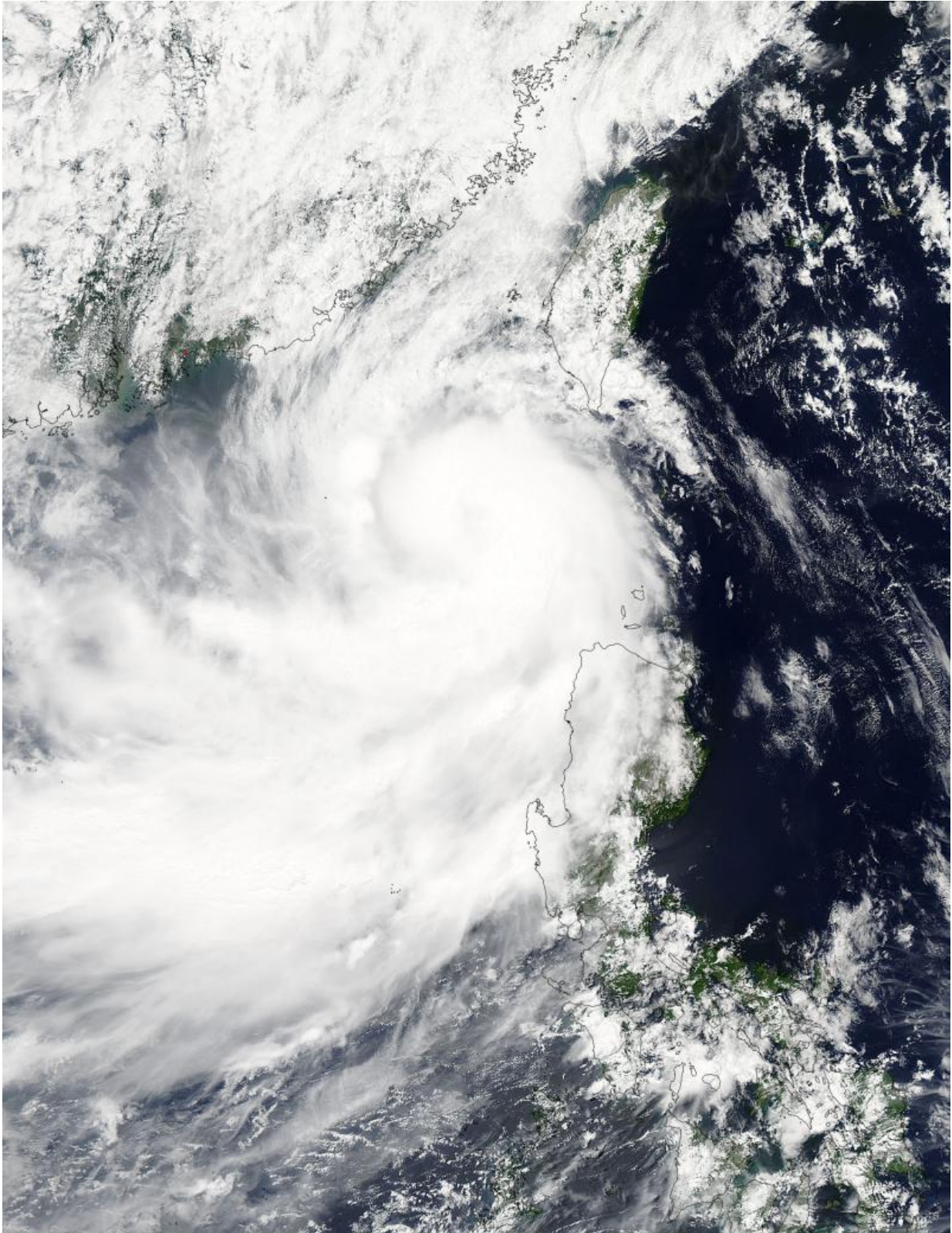


# **NASA sees Tropical Storm Linfa between Taiwan and northern Philippines**

July 7 2015

---



Aqua passed over Linfa on July 7 at 05:25 UTC (1:25 a.m. EDT) when it was

between Taiwan and Luzon, northern Philippines. Credit: NASA Goddard MODIS Rapid Response Team

NASA's Aqua satellite captured a picture Tropical Storm Linfa in the South China Sea on July 7 when it was between southern Taiwan and the northern Philippines.

Aqua passed over Linfa on July 7 at 05:25 UTC (1:25 a.m. EDT) and the Moderate Resolution Imaging Spectroradiometer or MODIS instrument captured a visible image of the storm. Bands of thunderstorms wrapping into the center of circulation from the south, draped over western Luzon. The MODIS image showed the tight concentration of thunderstorms around Linfa's center were located over the South China Sea. Fragmented bands of thunderstorms north of the center were brushing over Southern Taiwan while clouds from another band of fragmented [thunderstorms](#) stretched northwest through the Taiwan Strait.

On July 7 at 1500 UTC (11 a.m. EDT), Tropical Storm Linfa's maximum sustained winds had increased to 50 knots (57.5 mph/92.6 kph), up from 45 knots (51.7 mph/83.3 kph) six hours before. Linfa strengthened in the warm waters of the South China Sea now that its center has moved away from the northern Philippines and was no longer over land. Linfa was centered near 21.0 North latitude and 118.8 East longitude, about 277 nautical miles (319 miles/513.3 km) east-southeast of Hong Kong, China. Linfa has tracked northward at 3 knots (3.5 mph/5.5 kph).

China's National Meteorological Centre has (CNMC) issued a yellow category warning of typhoon at 6:00 a.m. July 7, Beijing Time. CNMC noted that Linfa is the tenth typhoon this year and at that time it was centered about 430 km (267.2 miles) southeast of border between Fujian

and Guangdong

For updated warnings and watches from the China Meteorological Service, visit: <http://www.cma.gov.cn/en/WeatherWarnings/>.

Linfa is moving north between Luzon and Taiwan. The Joint Typhoon Warning Center expects Linfa to strengthen to 60 knots (69 mph/111 kph) by mid-day on July 9, before weakening and then making landfall in mainland China.

Provided by NASA's Goddard Space Flight Center

Citation: NASA sees Tropical Storm Linfa between Taiwan and northern Philippines (2015, July 7) retrieved 19 April 2024 from <https://phys.org/news/2015-07-nasa-tropical-storm-linfa-netween.html>

This document is subject to copyright. Apart from any fair dealing for the purpose of private study or research, no part may be reproduced without the written permission. The content is provided for information purposes only.