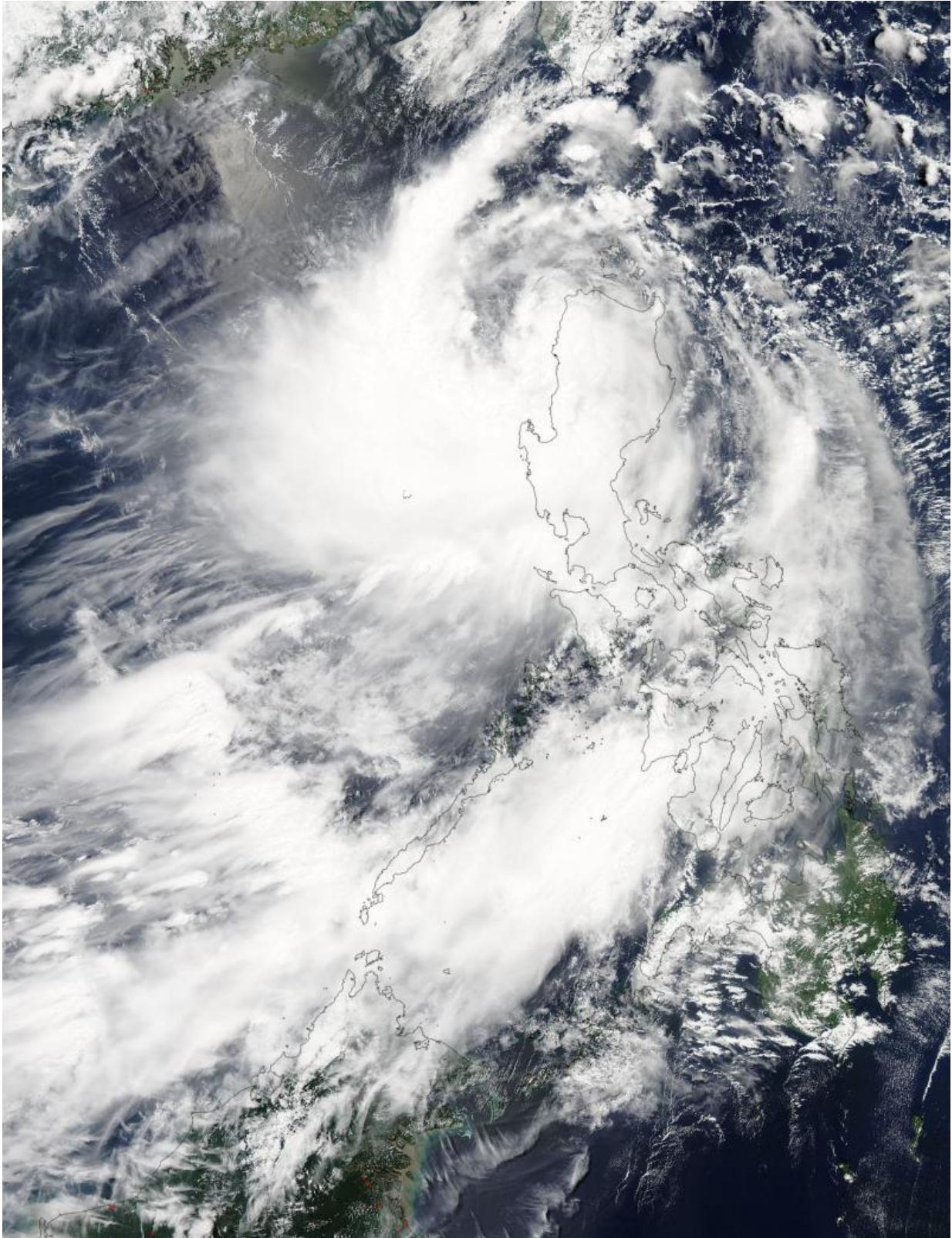


NASA sees Tropical Storm Linfa exiting northern Philippines

July 6 2015, by Rob Gutro



On July 5 at 05:25 UTC (1:25 a.m. EDT) the MODIS instrument aboard NASA's

Aqua satellite captured this image of Tropical Storm Linfa moving into the South China Sea. Credit: NASA Goddard MODIS Rapid Response Team

Tropical Storm Linfa moved over Luzon in the northern Philippines over July 4 and by early July 5, NASA's Aqua satellite saw the storm moving into the South China Sea.

On July 5 at 05:25 UTC (1:25 a.m. EDT) the MODIS (Moderate Resolution Imaging Spectroradiometer) instrument aboard NASA's Aqua satellite captured a visible image of Tropical Storm Linfa moving into the South China Sea. The storm appeared to be somewhat elongated because of [wind shear](#) and had weakened as a result of moving over land. MODIS imagery also showed an isolated area of deep convection, thunderstorms and clouds, pushed over the southwest quadrant of the low-level center, as a result of northeasterly wind shear.

The Joint Typhoon Warning Center noted that animated multispectral satellite imagery showed that the low-level center of circulation is exposed to outside winds.

Tropical Storm Linfa was about 295 nautical miles (339 miles/1,639 km) north-northwest of Manila, Philippines. It was centered near 19.2 North latitude and 119.2 East longitude. Tropical Storm Linfa has maximum sustained winds near 45 knots (51.7 mph/83.3 kph). It was moving to the north at 5 knots (5.7 mph/9.6 kph).

As Linfa continues to exit the northern Philippines, some warnings remained in effect for July 5. Public storm [warning](#) signal #2 remained in effect in the Luzon provinces of Batanes, Cagayan including Calayan and Babuyan group of Islands, Apayao, Kalinga, Ilocos Norte, Ilocos Sur and Abra. In addition Public [storm](#) warning signal #1 remained in effect

in the Luzon provinces of Pangasinan, Isabela, Benguet, La Union, Mt. Province and Ifugao.

Linfa is moving north and is forecast to then curve northwest and move between Taiwan and mainland China by July 9. The Joint Typhoon Warning Center expects Linfa to strengthen a little before wind shear brings about its dissipation in the Taiwan Strait sometime around July 10.

Provided by NASA's Goddard Space Flight Center

Citation: NASA sees Tropical Storm Linfa exiting northern Philippines (2015, July 6) retrieved 5 May 2024 from <https://phys.org/news/2015-07-nasa-tropical-storm-linfa-exiting.html>

This document is subject to copyright. Apart from any fair dealing for the purpose of private study or research, no part may be reproduced without the written permission. The content is provided for information purposes only.