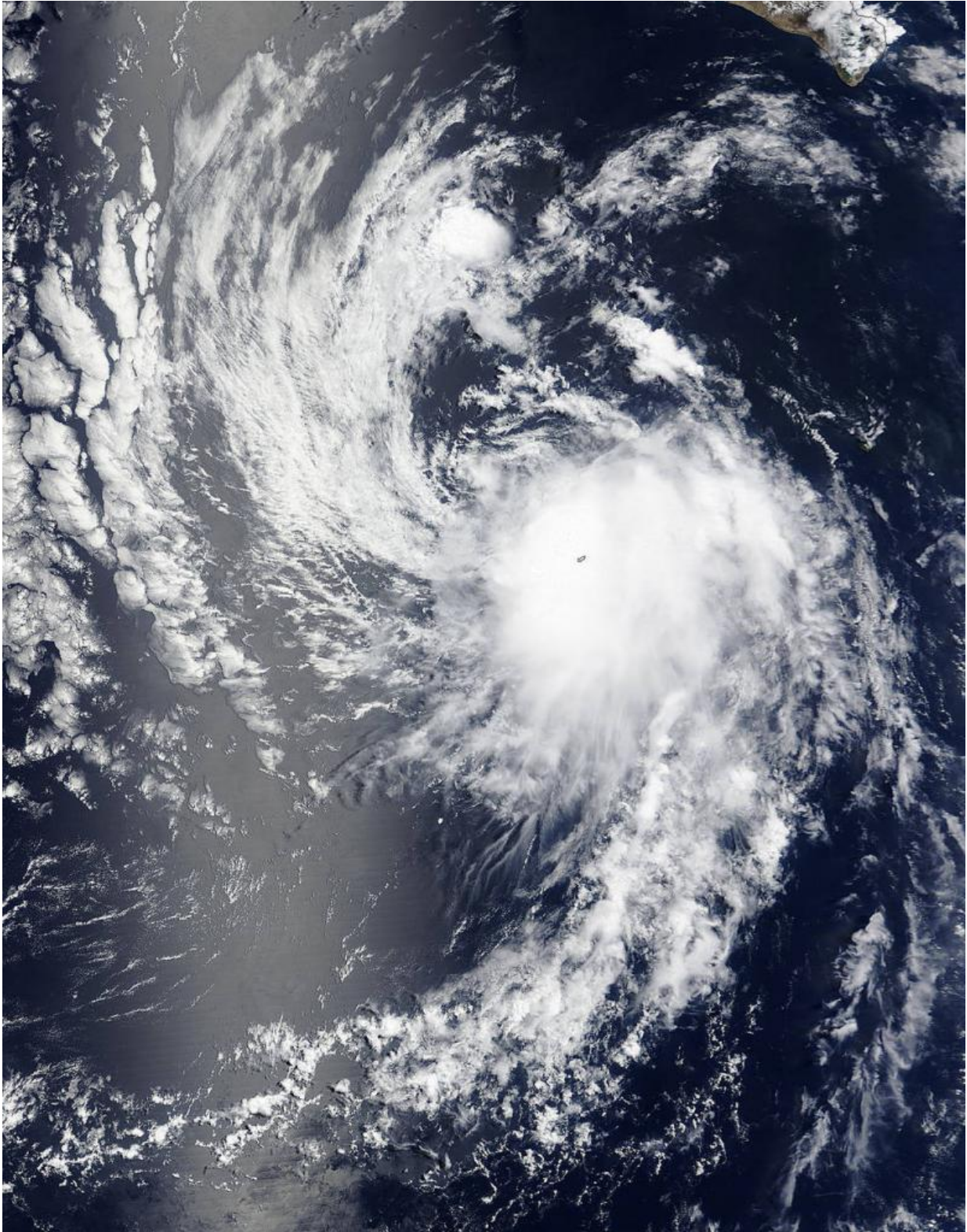


# **NASA sees Tropical Depression Felicia 'swallow' Socorro Island**

July 24 2015

---



When NASA's Terra satellite flew over the Eastern Pacific Ocean on July 23 at

18:45 UTC (2:45 p.m. EDT) the MODIS instrument captured this image of Tropical Depression Felicia over Socorro Island. Credit: NASA Goddard/MODIS Rapid Response Team

NASA's Terra satellite passed over the Eastern Pacific Ocean and observed Tropical Depression Felicia almost directly over Socorro Island, as if the storm swallowed the island.

Socorro Island sits in the eastern Pacific Ocean, southwest of the southern tip of Baja California, Mexico. Socorro is a small volcanic island in the Revillagigedo Islands. The island has experienced several [tropical cyclones](#) this year already, and Felicia is the most recent and unwelcome visitor.

At 11 a.m. EDT (1500 UTC) on July 24, 2015 the center of Tropical Depression Felicia was located near latitude 21.7 North, longitude 117.9 West. The depression is moving toward the northwest near 10 mph (17 kph) and a turn toward the west-northwest is forecast late on July 24. Maximum sustained winds were near 35 mph (55 kph) and the National Hurricane Center expects Felicia to continue weakening. The estimated minimum central pressure is 1007 millibars.

Felicia is forecast to become a remnant low by Saturday, according to the National Hurricane Center.

Provided by NASA's Goddard Space Flight Center

Citation: NASA sees Tropical Depression Felicia 'swallow' Socorro Island (2015, July 24) retrieved 26 June 2024 from <https://phys.org/news/2015-07-nasa-tropical-depression-felicia-swallow.html>

This document is subject to copyright. Apart from any fair dealing for the purpose of private study or research, no part may be reproduced without the written permission. The content is provided for information purposes only.